



Photo by Stephen Harrison

## COVID-19 Update - 3 March 2022

Stephen Harrison — March 2nd, 2022

Thank you to all parents who have been completing the Cotswold Household Isolating Notification Form. This is helping guide our school response and get any home learning support you have requested from us.

### [Click here for the Cotswold Household Isolating Notification Form](#)

We have been advised today that students who attend our school have received positive tests and are now isolating at home for the required period. We also have some of families who are isolating at home due to a family member of the household waiting for a test result.

We report all cases to the Ministry of Education and research would still suggest that schools are safe places to be. It is important, where possible that students are in the classroom making connections with their learning and with each other.

At this stage home learning booklets are available for students who are having to isolate because they are household contacts of a COVID case. If students are sick they should focus on getting better.

We know that there will be different situations that you may need to make us aware of so please keep in contact.

In Phase 3, only household contacts of confirmed cases are required to self-isolate. The isolation period will be 10 days. All other contacts of COVID-positive people are not required to isolate, but they will need to monitor for symptoms. Rapid antigen tests will become the primary testing method.

At Phase 3, the focus is on safely managing COVID-19 at home.

### **What You Need To Do ...**

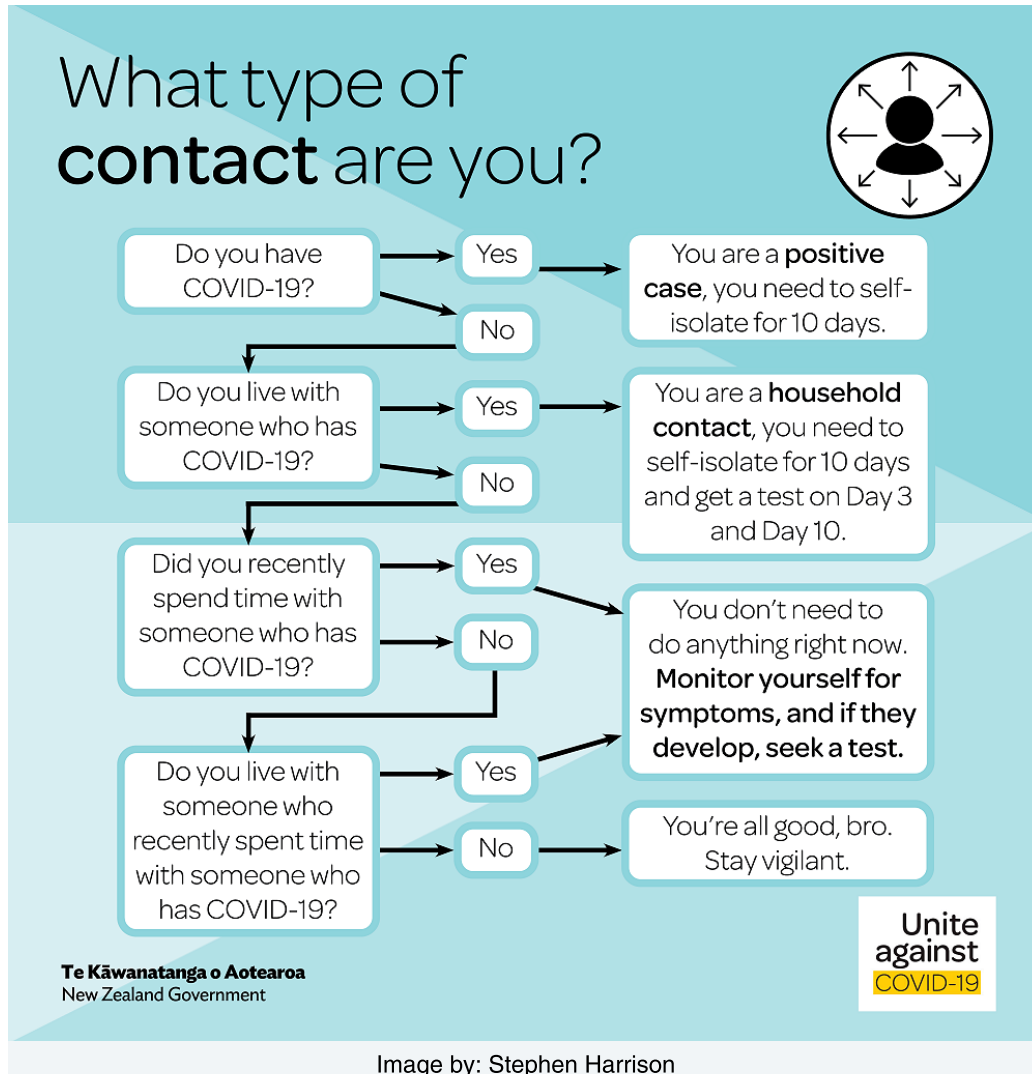
Your job remains the same, too:

- **If unwell, please stay at home.**
- **Please continue to keep a really close watch of your whānau for anyone with symptoms.**
  - A new or worsening cough
  - Sneezing and runny nose
  - A fever Temporary loss of smell or altered sense of taste
  - Sore throat
- Shortness of breath
- If any develop, get tested immediately, then stay at home until you receive the result.

The health and wellbeing of our children, staff and community is our top priority.

- School can stay open and your child can still attend providing:
  - They or a member of your household has not tested positive
  - They or a member of your household are still waiting for a test result
  - They are well and show none of the symptoms detailed above
- We have appropriate public health measures in place

**Please advise if your household is isolating while waiting for a test result for a household member or have a positive case in your household. The best way to do this is by using our Covid Notification Form.** Thank you for your assistance with this



Thank you for your cooperation at this challenging and uncertain time. If you have any questions or concerns please get in touch with one of us in the Covid management team:

- Stephen Harrison (Principal) - [stephen.harrison@cotswold.school.nz](mailto:stephen.harrison@cotswold.school.nz)
- Andrew Simpson (Associate Principal) - [andrew.simpson@cotswold.school.nz](mailto:andrew.simpson@cotswold.school.nz)
- Paula Fleming-Connell (Associate Principal) - [paula.flemingconnell@cotswold.school.nz](mailto:paula.flemingconnell@cotswold.school.nz)

Ngā mihi

**STEPHEN HARRISON**  
Principal

## Attachments

COVID-19 Update - 3 March 2022

