



**Report
Evening
2023**



Nau Mai, Haere Mai

Te Kura Tuarua O Horomaka

Karakia Timatanga

Whakataka te hau ki te uru
Whakataka te hau ki te tonga
Kia mākinakina ki uta
Kia mātaratara ki tai
E hī ake ana te atākura
He tio, he huka, he hauhū
Tihei mauri ora!

Get ready for the westerly
and be prepared for the southerly.
It will be icy cold inland,
and icy cold on the shore.
May the dawn rise red-tipped on
ice,
on snow, on frost.



Tonight

Tūrangawaewae | Whanaungatanga | Ako | Mana

1. Curriculum & NCEA Changes
2. Course Selection 2024



Tūrangawaewae | Whanaungatanga | Ako | Mana

Nau Mai Haere Mai | Welcome



Ann Brokenshire

Tumuaki | Principal

Tūrangawaewae | Whanaungatanga | Ako | Mana

Nau Mai Haere Mai | Welcome



Sam Forward

**Tumuaki Tuarua | Deputy Principal
(Pastoral Care and Wellbeing)**

Our Curriculum & NCEA Changes



Rosanna Katene

**Tumuaki Tuarua | Deputy Principal
(Teaching and Learning)**

The New Zealand Curriculum is changing - why?

- The Kōrero Mātauranga | Education Conversation in 2018 captured 43,000 New Zealanders' hopes and aspirations for students. Equipped with this information, a Ministerial Advisory Group investigated Curriculum, Progress and Achievement in 2018-2019.
- The group identified that significant changes to the national curriculum were needed to make it equitable and fit for purpose and the future, with a clear commitment to upholding Te Tiriti o Waitangi.



The New Zealand curriculum is changing - how?

- The Ministry of Education is two years into a six-year programme to refresh The New Zealand Curriculum.
- The refreshed curriculum content is being developed and released in phases, and schools and kura will have until the beginning of 2027 to start using the fully refreshed curriculum.

Te Mātaiaho | The Curriculum Refresh



Tūrangawaewae | Whanaungatanga | Ako | Mana

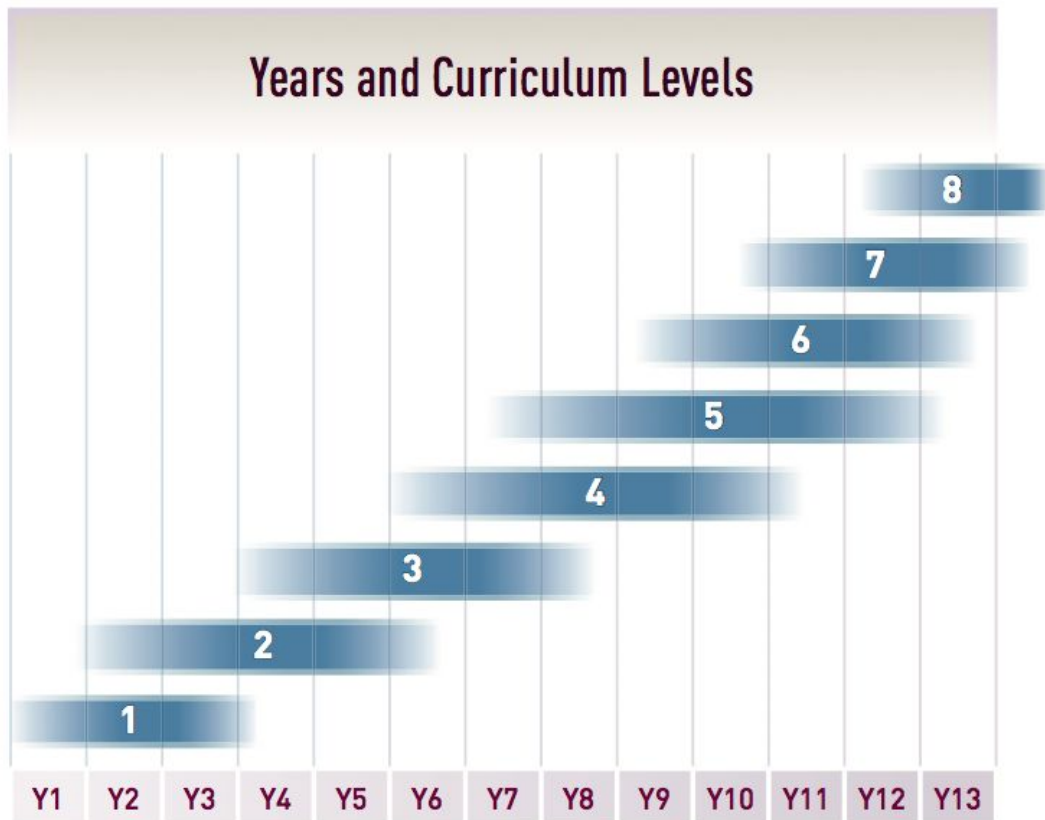
The Timeline of Curriculum updates

- [Te ao tangata | social sciences](#) was released in November 2022, and the new [Aotearoa New Zealand's Histories](#) must now be taught in all schools.
- [English](#) is now available to be explored and used in schools and kura
- [Mathematics and statistics](#) is now available to be explored and used in schools and kura
- Science is in development for release in 2024
- Technology is in development for release in 2024
- The arts is in development for release in 2024
- Health and physical education is in development for release in 2025
- Learning languages is in development for release in 2025.



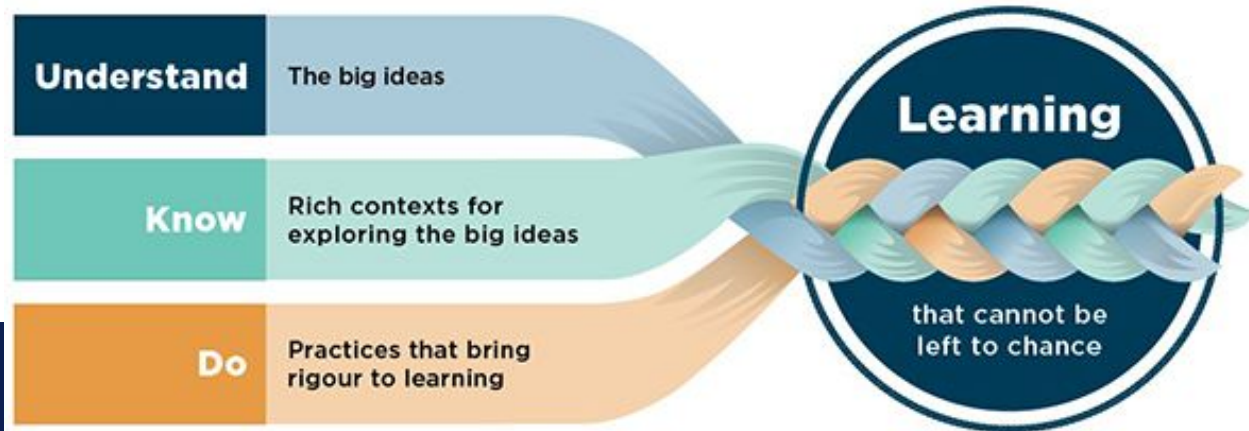
As part of the changes we are moving away from this model

- Curriculum levels by year groups, to
- “Progress Outcomes”



The new elements; Know, Understand, Do

- Progress outcomes based on what the students understand, know and do have replaced Achievement Objectives/ Curriculum Levels.
- The new progressions model covers five phases of learning: years 1–3, years 4–6, years 7–8, years 9–10, and years 11–13.



“By the end of Year 3”

“By the end of Year 6”

NCEA is changing as well!



NCEA Education

As well as the Curriculum Refresh, NCEA is gradually changing as well.

- NCEA - our National Certification of Education Achievement was introduced in 2002 and is the main school leaving qualification. It is recognised by employers and used as a stepping stone into further study.
- NCEA remains a multi-level qualification with open-entry into NCEA Level 1, 2 and 3



Tūrangawaewae | Whanaungatanga | Ako | Mana

What is changing?

- Updated course structure with a move to **fewer, more meaningful assessments**
- Reducing student assessment workload, to allow learning that is responsive to our whānau and community, which also reflects local contexts
- Most important to note is that with these changes the **requirements to gain an NCEA qualification** have also changed
- There is now a **Literacy and Numeracy co-requisite** that students must pass to gain any level of NCEA

The changes to the qualification are mandatory from 2024. We want to make sure we help our whānau and students prepare for those changes.



Literacy and Numeracy co-requisite

- From 2024, to be awarded any level of NCEA, learners will need to achieve the new 20-credit Literacy and Numeracy co-requisite.
- We carried out these assessments last year and again this year. A majority of our senior students have already gained this co-requisite.
- Credits used towards the co-requisite cannot be used towards the 60-credit NCEA. Essentially, the number of credits required to gain each level of NCEA remains the same, with the literacy and numeracy requirements separated out into a 'one-off' co-requisite.



What stays the same?

- Any credits learners already have can be used towards the new NCEA qualifications.
- There is no time limit on completing an NCEA.

Course and certificate endorsement requirements

- **Course endorsement:** 14 or more credits in a course at Achieved, Merit or Excellence (including at least 3 external and 3 internal credits).
- **Certificate endorsement:** 50 or more credits at Merit or Excellence level.



What is changing from 2024? At Level 1

Current Level 1

6 Courses

Unlimited assessments / credits per course

Certificate requirements

80 Credits
+ 10 Literacy Credits
+ 10 Numeracy Credits

New Level 1

6 Courses

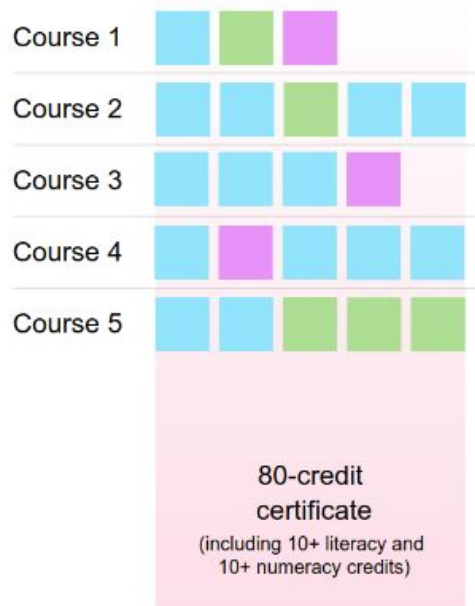
Max. 4 assessments (20 Credits) per course (2 Internal + 2 External)

Certificate requirements

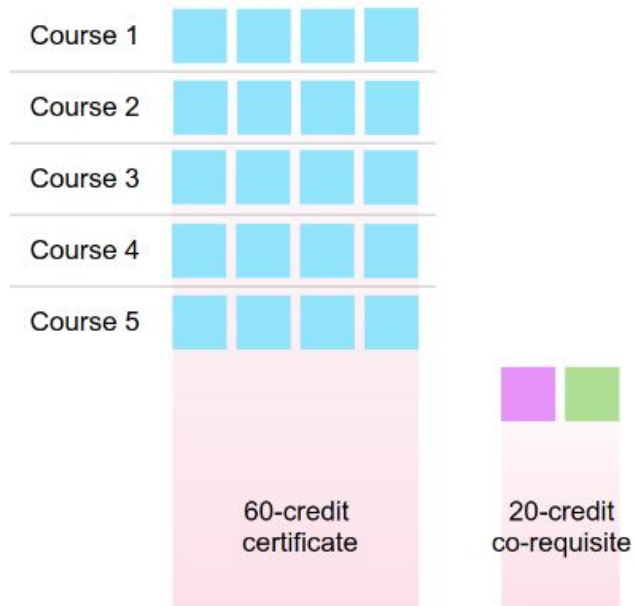
60 Credits
+ Literacy and Numeracy
Co-Requisite Qualifications



Existing NCEA Level 1



New NCEA Level 1



Key

- Standard used to assess te reo matatini or literacy
- Standard used to assess pāngarau or numeracy



Level 2 and Level 3 stay the same - For Now...

Level 2

60 credits at level 2 or above
+ 20 credits from any level
+ L1 Literacy and Numeracy

Courses generally offer around **14 credits** each at L2

*Can study **5 or 6 courses***
Must study an **English** course

Level 3

60 credits at level 2 or above
+ 20 credits from level 2 or above
+ L1 Literacy and Numeracy
*Can study **5 or 6 courses***

University Entrance (UE)...
14 credits at Level 3 in each of
three approved subjects
Literacy - 10 credits at Level 2 or
above
Numeracy - 10 credits at Level 1
or above.

Endorsements

For an **NCEA certificate** to be **endorsed** with Excellence or Merit, a student must gain 50 credits at the level of the certificate or above. So 50 Credits at Excellence = Excellence Endorsement.

Course endorsement provides recognition of student achievement in an individual course. Students will gain an endorsement for a course if, in a single school year, they achieve:

- 14 or more credits at Achieved or Merit or Excellence, and
- at least 3 of these credits from externally assessed standards and 3 credits from internally assessed standards.



Dual Enrolment

- A partnership between HHS and a Tertiary Provider
- Often 3 days at HHS and 2 days at the Tertiary Provider
- Course come from 6 areas: **Business, Creative, Education and Sustainability, Food and Hospitality, Hair and Beauty, Trades**



Te Kura Tuarua o Horomaka
Hillmorton High School



Tūrangawaewae | Whanaungatanga | Ako | Mana

Special Assessment Conditions

- All of our ākonga and their whānau have the right to apply for Special Assessment Conditions
- These conditions give ākonga different types of extra support they need to maximise their academic outcomes
- If you think that your tamaiti (child) may qualify for these conditions the first step is to contact your Head of Year for that year level

Special Assessment Conditions can include

- Having a reader and/or a writer
- Having access to a computer
- Extra time
- A different space



Course Selection



Sam Ainsworth

**Tumuaki Tuarua | Deputy Principal
(Operations)**

Our Curriculum - Built on Progression



Tūrangawaewae | Whanaungatanga | Ako | Mana

Our Curriculum - Built on Progression

Year 7

20 Hours in Basecamp
(Reading, Writing, Maths, Inquiry)

5 Hours Per Week...

**Music, Performing Arts, Hard
Materials, Textiles, Food and
Nutrition, Health and PE, Science**

Year 8

17 Hours in Basecamp
(Reading, Writing, Maths, Inquiry)

8 Hours Per Week...

**Art, Music, Drama, Dance, Hard
Materials, Textiles, Digital
Technology, Food and Nutrition,
Health and PE, Science, Spanish,
Japanese, Pasifika Studies**

**Japanese, Pasifika Studies,
Health and PE, Science, Spanish**

Our Curriculum - Built on Progression

Year 9

English, Maths,
Science, Social
Science, Health
& PE, Ara Māori,
Digital
Technology

**4 Half-Year
Option Courses**

Year 10

English, Maths,
Science, Social
Science, Health
& PE

**3 Full-Year or 3
Full and 2
Half-Year
Option Courses**

Year 11

English, Maths,
Science

**3 Full-Year
Option Courses**

Year 12/13

**6 Full-Year
Option Courses**

Our Curriculum - Built on Progression

Year 9

6 Hours

in Option
Subjects

Year 10

9 Hours

in Option
Subjects

Year 11

**12
Hours**

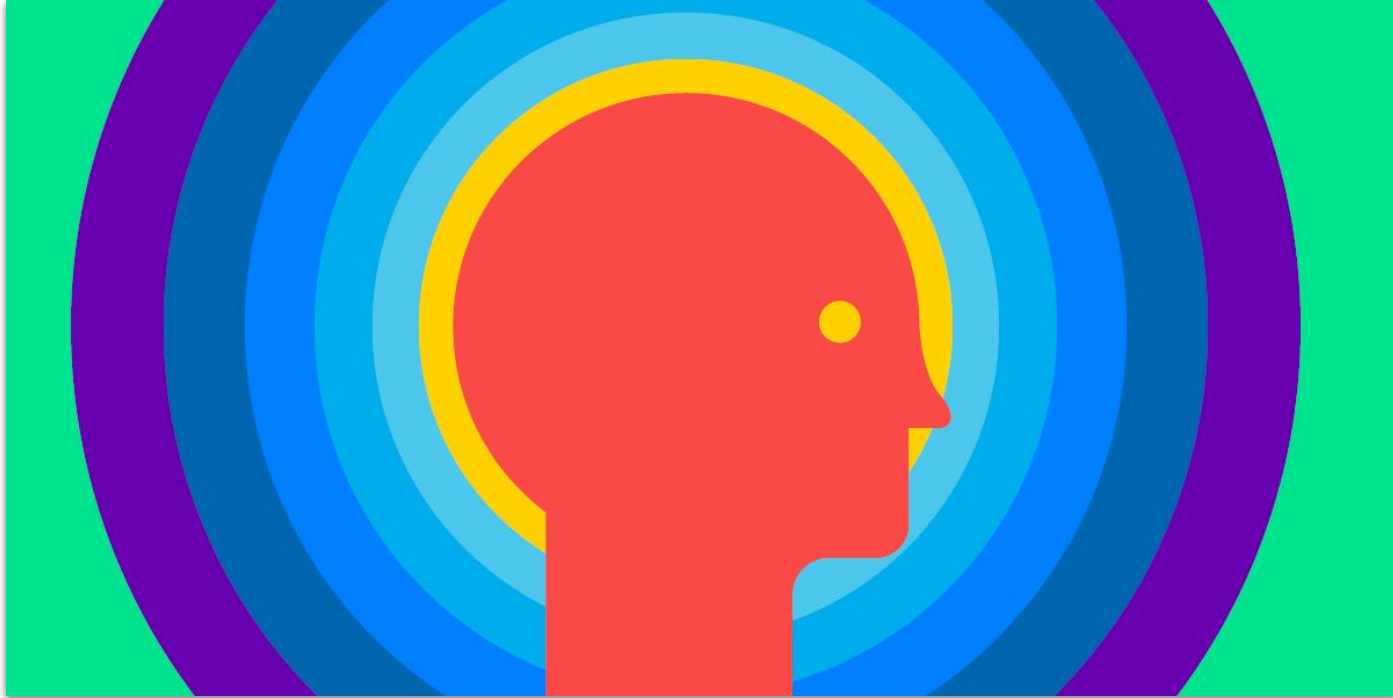
in Option
Subjects

**Year
12/13**

24 hours

in Option
Subjects

Student Centered Course Selection Approach



Tūrangawaewae | Whanaungatanga | Ako | Mana

Year 9 Courses

Half - Year Courses

Name	Code
Art - Toi Ataata^	9ART
Dance - Toi Kanikani	9DAN
Drama - Toi <u>Whaakari</u>	9DRA
Music - Toi Puoro^	9MUS
Wearable Arts Showcase^	9WAS
Design & Visual Communication^	9DVC
Design & Engineering Robotics	9ROB
Food & Nutrition^	9FDN
Technology - Hard Materials^	9THD
Technology - Textiles^	9TEX
Athlete Development	9ADP
Sustainability - Kaitiakitanga	9SUS

Full - Year Courses

Name	Code
Te Reo Māori	9MAO
Spanish	9SPN
Japanese	9JPN
Te Pouāma	TPOU
TAPA - Pasifika Culture and Language Studies	TAPA
Ako Connect	<u>9ACT</u>
English Language Learning	9ELL

Year 9 Example 1

	SEMESTER 1 (January - July)	SEMESTER 1 (July - December)
2	Whānau Group (15-25 minutes per day x 5 days p/w)	
3	English (Kaupapa <u>Ingarihi</u>) (4 lessons p/w)	
4	Mathematics and Statistics (Pāngarau) (4 lessons p/w)	
5	Science (Pūtaiao) (3 lessons p/w)	
6	Social Studies (Tikanga-ā-iwi) (3 lessons p/w)	
7	Health and Physical Education (Hauora, Kori Tinana) (3 lessons p/w)	
8	Ara Māori (2 lessons p/w)	Digital Technology (Hangarau Matihiko) (2 lessons p/w)
9	Option 1 (3 lessons p/w)	Option 3 (3 lessons p/w)
10	Option 2 (3 lessons p/w)	Option 4 (3 lessons p/w)



Tūrangawaewae | Whanaungatanga | Ako | Mana

Year 9 Example 2

	SEMESTER 1 (January - July)	SEMESTER 1 (July - December)
2	Whānau Group (15-25 minutes per day x 5 days p/w)	
3	English (Kaupapa <u>Ingarihi</u>) (4 lessons p/w)	
4	Mathematics and Statistics (Pāngarau) (4 lessons p/w)	
5	Science (Pūtaiao) (3 lessons p/w)	
6	Social Studies (Tikanga-ā-iwi) (3 lessons p/w)	
7	Health and Physical Education (Hauora, Kori Tinana) (3 lessons p/w)	
8	Ara Māori (2 lessons p/w)	Digital Technology (Hangarau Matihiko) (2 lessons p/w)
9	Option 1 (3 lessons p/w)	
10	Option 2 (3 lessons p/w)	Option 3 (3 lessons p/w)



Year 10 Courses

Half - Year Courses

Name	Code
Robotics and Programming	10ROB
Technology - Engineering^	10TEN
Technology - Hard Materials^	10THD
Technology - Wood^	10TWD
Athlete Development	10ADP
Outdoor Education	10OED
Ancient Civilisations	10ANC
Changemakers	10SUS



Full - Year Courses

Name	Code
Art - Toi Ataata^	10ART
Dance - Toi Kanikani	10DAN
Drama - Toi Whaakari	10DRA
Music - Toi Puoro^	10MUS
Design & Visual Communication^	10DVC
Digital Technology	10DTY
Enterprise Studies	10ENT
Food & Nutrition^	10FDN
Technology - Textiles^	10TEX
Te Reo Māori	10MAO
Spanish	10SPN
Japanese	10JPN
Te Poutama	TPOU
TAPA - Pasifika Culture and Language Studies	TAPA
Ako Connect	10ACT
English Language Learning	10ELL

Year 10 Example

	SEMESTER 1 (January - July)	SEMESTER 1 (July - December)
2	Whānau Group (15-25 minutes per day x 5 days p/w)	
3	English (Kaupapa Ingarihi) (4 lessons p/w)	
4	Mathematics and Statistics (Pāngarau) (3 lessons p/w)	
5	Science (Pūtaiao) (3 lessons p/w)	
6	Social Studies (Tikanga-ā-iwi) (3 lessons p/w)	
7	Health and Physical Education (Hauora, Kori Tinana) (3 lessons p/w)	
8	Option 1 3 lessons p/w	
9	Option 2 3 lessons p/w	
10	Option 3 3 lessons p/w	Option 4 3 lessons p/w



Tūrangawaewae | Whanaungatanga | Ako | Mana

Senior Specialist Courses - All 4 Hours Per Week

- History
- Travel & Tourism
- Automotive Engineering
- Design and Visual Communication
- Technology Engineering
- Technology Wood
- Directions Focus
- Dual Enrolment
- Food Arts
- Textiles and Fashion Design
- Japanese
- Spanish
- Mathematics and Statistics
- Music
- Te Reo Māori
- Te Poutama
- TAPA - Pasifika culture and language studies
- Healthy minds & People & Managing Change
- Personal Performance, Coaching and Leadership
- Outdoor Education
- Biology
- Chemistry
- Physics
- Psychology
- Classical Studies
- Geography
- History
- Visual Arts
- Design & Photography
- Accounting - Reports & Decision Making & Retail
- Business Studies
- Dance (Kanikani)
- Digital Skills
- Digital Technology
- Drama
- English Connections
- English Fiction
- English Non-Fiction
- English Language
- Hospitality
- Social Studies



Year 11 Example

	SEMESTER 1 (January - July)	SEMESTER 1 (July - December)
1	Whānau Group (15-25 minutes per day x 5 days p/w)	
2	English (Kaupapa Ingarihi) (4 lessons p/w)	
3	Mathematics and Statistics (Pāngarau) (4 lessons p/w)	
4	Science (Pūtaiao) (4 lessons p/w)	
5	Option 1 4 lessons p/w	
6	Option 2 4 lessons p/w	
7	Option 3 4 lessons p/w	
8	Hauora - Wellbeing 1 lesson p/w	



Year 13 Example

	SEMESTER 1 (January - July)	SEMESTER 1 (July - December)
1	Option 1 4 lessons p/w	
2	Option 2 4 lessons p/w	
3	Option 3 4 lessons p/w	
4	Option 4 4 lessons p/w	
5	Option 5 4 lessons p/w	
6	Option 6 4 lessons p/w	
7	Study 1 lesson p/w	



Tūrangawaewae | Whanaungatanga | Ako | Mana

Where to find Coursebooks?

Home Our School Enrolments

- Principal's Welcome
- Our People
- Our Board
- Our Policies
- School Day Times
- School Map
- Middle School
- Senior School
- Annual Report
- School Charter
- Strategic & Annual Plan

Te Kura Tuarua o Horomaka
HILLMORTON HIGH SCHOOL

agencies including polytechnics, universities, and private providers, and enable students to gain NCEA relevant to their career plan. There is no cost to students.

Home Our School

Gateway Programme (NCEA Level 1)

The Gateway programmes provide an opportunity for students continuing their high school education. As with STAR courses, students can study in the Careers Centre.

COURSEBOOK LEVEL 1

**Te Kura Tuarua o Horomaka
Hillmorton High School**
Inspiring academic excellence, leadership and a love of learning

LEVEL 1 Course Guide - 2023



Tūrangawaewae | Whanaungatanga | Ako | Mana

New for the Middle School



Te Kura Tuarua o Horomaka
Hillmorton High School

Middle School Course Guide (Year 9 & 10)



Tūrangawaewae | Whanaungatanga | Ako | Mana

Summary

Half Year (Semester) Options

TECHNOLOGY *(We suggest you choose at least one of these in your top six.)*

10ROB	Robotics and Programming This course introduces students to Robotics. Students will work with Vex Robotics kits to design, build and program Robots.	
10THD	Technology - Hard Materials[^] This course is largely practical but does include theory and design work. Students gain valuable problem solving skills while working with hard materials.	\$

HEALTH & PHYSICAL EDUCATION

<u>10ADP</u>	Athlete Development This course will suit those who have a high interest level in sport, fitness, recreation and learning about how to be an athlete.	
<u>10OED</u>	Outdoor Education This course will suit those who have an interest in the outdoors and want to develop their leadership skills as they work in teams.	

SOCIAL SCIENCES

10ANC	Ancient Civilisations This course encourages students to investigate a range of ancient civilisations and cultures with the aim of examining how they have influenced the modern world and continue to do so.	
<u>10CHM</u>	Changemakers This course offers an opportunity for students to examine issues around change and protest movements of the past and present. With a view to looking forward and becoming the changemakers of the future.	



How to choose OPTION course



Course Selection Year 11 2023

Students in Year 10 complete this form.

It is essential you are logged on with your school google account when you complete this form.

Please make sure that you have discussed these choices with your parents. They will be sent a copy of this form once it's completed.

You will study 3 courses next year in addition to English, Maths and Science. In case we can't offer one of your first choices, we ask that you rank your top 6 choices when making your course selection. We hope that you get your top 3 choices as your 3 courses but choosing 6 subjects means you have 3 alternative subjects if there are any clashes with your timetable.

You will also need to give an indication of which Maths and Science Courses you would like to study. Please speak to your teachers if you have any questions.

You MUST NOT select the same course more than once.

ainsworths@hillmorton.school.nz [Switch accounts](#)



* Indicates required question

The option subjects for Year 11 are listed below. Choose the option subjects you would like to take and rank them in your order of preference. Rank 5 subjects.

NB: You will have 3 option subjects. We will endeavour to give you your first three choices, however, this is not always possible due to timetable clashes and entry requirements. See the course book for course descriptions. Mathematics, English and Science are compulsory in Year 11. Each of these departments will place you in an appropriate course so you do not need to select them here.

1st Choice *

1ART - Visual Arts

2nd Choice *

Choose

3rd Choice *

Choose



Ranking Courses

- Your child needs to **RANK** their subjects from **1st** preferred choice to **last** preferred choice.
- Almost 100% of students **get their first choice**.
- If there are clashes or if courses do not run, we allocate the next preferred course.

Course Choice and Description:		Subject Choice (for Planning Purposes):
1st Choice Subject	1st choice subject you want to study most:	
2nd Choice Subject	2nd choice subject you want to study most:	
3rd Choice Subject	3rd choice subject you want to study most:	
4th Choice Subject	4th choice subject you want to study most:	
5th Choice Subject	5th choice subject you want to study most:	
6th Choice Subject	6th choice subject. A subject you would like to study but in order, the 6th best choice after the first choice:	
7th Choice Subject	1st Reserve Choice Subject:	
8th Choice Subject	2nd Reserve Choice Subject:	



Advice for Course Selection

- Students should choose something they are **passionate** about
- Students should choose something they feel that can do **well** in
- Students should choose subjects that **they want to do**
 - Not because they like the **teacher**
 - Not because their **friends** are doing it
- Students should choose a **broad balance of subjects**, especially in the Middle School
 - **Arts, Technology, Languages, Other....**
- Students need to be aware of any **prerequisites**
- Students should choose as **early as possible**



We will write to you...

- When the **course selection is complete** you will receive a letter of courses that were chosen by your child.
- When the timetable is complete at the **end of the year**, you will get a letter detailing what classes your child is in.



Monday 9th November 2021

Dear Parent(s) / Carer(s),

Re: Course Selection for 2022

We have now received all student selections for their preferred courses next year. As you know, we asked students to rank a number of courses in case any of their selections clash or if courses do not run. The list of course selections is below.

Name:

Year Group (2022): **12**

1st Choice: **2ECR - English - Fiction**

2nd Choice: **2COM - Business Studies**

3rd Choice: **2CLN - Culinary Arts**

2ACC - Accounting Reports, Decision Making & Retail

5th Choice: **2MAI - Mathematics and Statistics (Mainly Internal)**

6th Choice : **2CLS - Classical Studies**

7th Choice (Yr 12/13s only): **2PEP - Personal Performance + Coaching + Leadership**

8th Choice (Yr 12/13s only): **2TOU - Introduction to Tourism & Travel**

We will write to you again in the coming weeks to let you know which subjects Marnus will actually be studying next year. We hope to do this before the end of the year.



Tūrangawaewae | Whanaungatanga | Ako | Mana

Tertiary Providers Here Tonight



Tūrangawaewae | Whanaungatanga | Ako | Mana

Dates for Course Selection

- End of Week 3

Course Selection is OPEN!

- Week 4 & 5 - From 7th to 21st August: Course Selection Window
- Week 6 - 21st August

Course Selection is CLOSED!



Karakia Whakamutunga

Kia whakairia te tapu
Kia wātea ai te ara
Kia turuki whakataha ai
Kia turuki whakataha ai
Haumi e. Hui e. Tāiki e!

Restrictions are moved aside
So the pathways is clear
To return to everyday
activities





Enjoy Reconnecting at our Reports Evening!

Te Kura Tuarua O Horomaka