



aunt

*whaea kēkē, whaea*



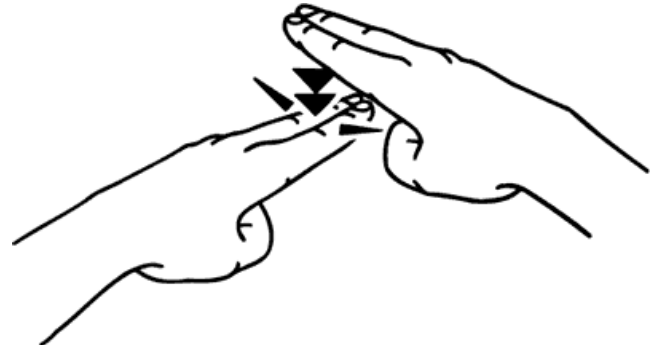
dad

*matua, pāpā*



brother

*tuakana, teina, tungāne*



father

*matua, pāpā*



cousin

*tuakana, taina, tungāne, tuahine*



sister

*tuakana, teina, tuahine*



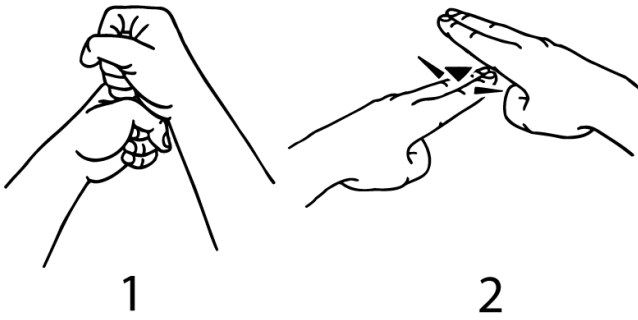
uncle

*matua kēkē, pāpā*



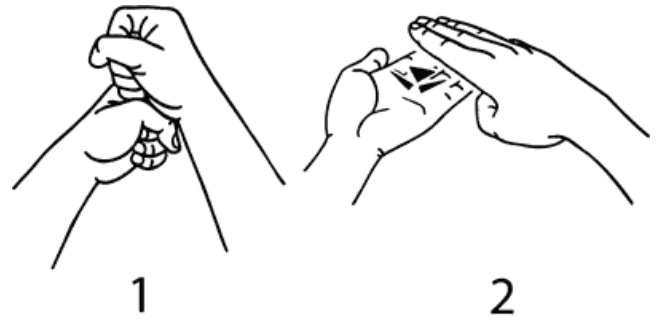
family

*whānau*



grandfather

*tipuna tāne, koroua*



grandmother

*tipuna wahine, kuia*



mum

*whaea, māmā*



mother

*whaea, māmā*