

Uniform Clarifications

Acceptable	Not acceptable
	
<p>Shoes should be totally black. A small coloured logo or sole is acceptable, but not preferred. Tip: remove any white laces!</p>	
 <p>Plain black rain jackets or puffer jackets are acceptable in colder weather. The official Nayland College hoodie can be worn.</p>	 <p>Any colour sweatshirts and hoodies are unacceptable (including Nayland College group/team hoodies) Black leather or denim jackets are unacceptable</p>



Nayland College caps/bucket hats/beanie or plain black caps or bucket hats or beanies are acceptable **outside only**



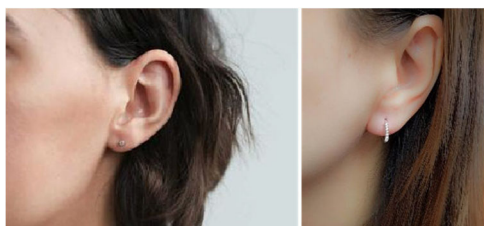
Black caps or hats with text or logos are unacceptable. Any non-black cap or hat is unacceptable.



Nayland College branded shorts, trousers or skirts.



Any type of jeans, activewear, track pants or any non-Nayland College branded items



We try to be sensible about jewellery and makeup. Primarily the school is worried about health and safety.

The rules state that the following is unacceptable:
Excessive make-up
Excessive piercings (one matching pair of ear studs or sleepers is acceptable)
Excessive jewellery

The Senior Leadership Team has the final say on what is deemed 'excessive'.