

The Peril

Published by Amuri Area School – (03) 315 8233
Email: theperil@amuri.school.nz

Friday 29th May 2020
Issue: 2010:19

Advertisements for insertion can be e-mailed to the above address (with a billing address provided) or left at the Amuri Community Library. Closing day and time for both is 4pm on Monday. When there is a Public Holiday on a Monday the deadline will be extended to 4pm the next day (Tuesday). Regular advertising by arrangement.

Emailed classified ads (not businesses/community groups/clubs) will need to be paid **IN ADVANCE** directly into our bank account by close of bank business on a **MONDAY (Tuesday when there is a Public Holiday)** for the ad to appear that Friday (20c per word - minimum of \$2). If there is no payment received the ad **WILL NOT** appear that week, ie **NO PAYMENT, NO AD**.

Payment in advance does not apply to regular advertisers eg businesses/community groups/clubs who are invoiced

Advertising Costs: Classified and Community Ads: 20c per word (minimum of \$2)

Businesses: Full Page \$50, ½ Page \$35, ¼ Page \$25, ⅓ Page \$20, 1/16 Page \$15. If you require an ad to be designed this will incur a \$10 fee (businesses only). All GST inclusive.

Payment made at the Library is cash or cheque only (payable to Amuri Area School) – no EFTPOS.

ASB Bank 12-3616-0057391-01

Please quote your name as a reference.

This account is for PERIL PAYMENTS ONLY

COMMUNITY NOTICES

FOOD BANK - Living Waters Hurunui Outreach if you are in need of food supplies please give us a call:

Cell phone: 027 448 6594 - Aveai

027 448 6583 - Isaiah

Landline: 03 314 2044

Email: livingwatershurunuioutreach@gmail.com

You can also send us a private message through messenger

Wayne's Cleaning Services LTD

Ph 03-312-5730 or 021-0227-0006

Weekly domestic/commercial, one-off, builders, rental, moving out/in, oven and window cleaning.

We also cover carpet cleaning.

We supply all the products and equipment.

So, if you need a hand then give me a call.

COMMUNITY NOTICES

Culverden Craft Group



- ❖ Are you new to the area?
- ❖ Have you been here for a while?
- ❖ Are you looking for something new to do in the evenings or a way to meet new people?
- Do you enjoy, Knitting, Sewing or other handcrafts?
- Conversation?
- Adult Colouring In or Diamond dots?

A wonderful group of ladies who also enjoy these activities are meeting again this year on alternating Wednesdays at 7pm at the Amuri Community Library. We'd love to have you join us! We are always looking for some fresh new faces to come and join the fun,

Our next meetings will be 10th and 24th June, 8th and 22nd July, 5th and 19th August.

Please note change of venue as we are unable to use the Fire station until Covid Level 1. Look forward to seeing you, please bring an insulated cup of your favourite hot drink, or a thermos and your own cup ☺

If you're interested please ring Pam on 315-8910 or Kay 315-6396 to find out more

Please note these meetings will not be craft lessons.

SITUATIONS VACANT



HELP! Relief teachers needed! Are you a registered teacher with a current practising certificate and a few spare hours during the week? Are you looking for a bit of part time work in a stimulating and supportive school environment? Then we need YOU! Please contact Dorz on 027 351 4656 or email at dorz@amuri.school.nz.

Appointment of Director To the Board of Amuri Health Care

A vacancy exists for the position of a Director to join the Board of Amuri Health Care.

This is a voluntary role, open to a resident in the Amuri Area.

Written nominations including a CV should be with the undersigned by

12 noon on Friday 12 June 2020.

The Secretary, Amuri Community Trust, Whalesback,
2479 Inland Road, Kaikoura 7373

Enquiries to Jane Northcote 315-6081 or
whalesback@xtra.co.nz

CHURCH NOTICES

AMURI COOPERATING PARISH

The most recent gathering of the Amuri Cooperating Parish was on March 22nd at Rotherham, the Sunday prior to Level 4 Lockdown. Since then I have uploaded a brief homily each week onto the Church Facebook page, and this can also be accessed by following this

link <https://anglicanlife.org.nz/churches/st-mary-rotherham/>.

Possibly, we will be able to gather together again this Sunday however given that the deadline for publication of notices clashes with the time of the government announcement, this will be confirmed on the Facebook page.

On Saturday, May 16, the church bell rope at St Mary's, Rotherham was replaced and so when services do resume we look forward to hearing that sound at 9:55am most Sundays.

When the nation reaches Level 1 again, the Amuri Cooperating Parish will be holding a fundraiser quiz as we seek an assessment and quantity survey of St Andrew's, Culverden. The estimated cost for this work is over \$25,000. Currently we are unable to use this building because it does not meet the seismic standards set by the Presbyterian Church of Aotearoa New Zealand. Given that it is a building of significance in the Amuri area, we ask you to support any effort to reinstate its use.

Women's study group has resumed and meets in accordance with safe social distancing standards at the vicarage in Stock Street, Culverden, from 10:00am. (Phone 315 8210).

The Amuri Cooperating Parish looks forward to continuing to support the people of the Amuri as we build and recover following the Covid-19 lockdown.

Yours faithfully

Archdeacon Dawn Daunauda

Amuri Players presents 'Footrot Flats – The Musical'

It is 20 years since we performed this iconic New Zealand play.

Level 2 means we can hold auditions. Now is your chance to get involved!!

We need dogs, sheep, pigs, and the occasional human.

The plan is Sunday 7th June 7pm at Hanmer Hall, but as we are not sure of the restrictions that will still be in place, if you are keen to take part, please email Grum (the director)

grumgoesglobal@gmail.com or message him on Facebook and he will get back to you with details of the audition process.



©http://jillscene.com



Ph: 03 315 6328

Fax: 03 315 6592
40 Wilkin Street

Email: reception@amurihc.co.nz
www.amurihc.co.nz

In an emergency dial 111

Hours of Business:
8.30am – 5pm

Appointments available:
9am-12pm & 2pm-4.30pm
Monday-Friday

After Hours:
5pm-9am Monday to Friday,
(GP on Call)

Public holidays & weekends
(GP on Call)

**Phone our practice anytime, day or night
for immediate assistance.**

The after-hours phone is connected to and answered by a registered nurse, who will assess your needs, offer advice or arrange immediate assistance from the on-call doctor or rural nurse. (The triage nurse may take a few minutes to answer).

Covid-19 Levels

Thank you for your continued understanding while we operate under our current protocols. We will continue to update the Facebook page and web site along with the weekly newsletter with any changes to Amuri Health Centre's opening and appointment availability.

If you are unsure or have any questions, please ring the health centre to talk to the receptionist or the practice nurse.

Invoices

Amuri Health Centre would like to advise all patients that we are hoping to reduce the use of paper and printing by sending any outstanding invoices where possible by email or text. The receptionist will continue to update your records, so we have the correct contact information on file. Some of our families have shared emails or like their invoices to go to a dedicated account holder, please confirm your preferences on this with the receptionist at your appointment to avoid any privacy concerns. We will not move to paperless options until the end of July and for those who do not have an email or mobile phone, we can continue to post a paper invoice. We still have a pay on the day policy where possible and are now able to take 'contactless payments'

Personnel Availability:

Dr Deidre Clink:

June: 4, 8, 11, 15, 18, 22, 25, 29

Dr Graeme Scrivener:

May: 29

June: 2, 5, 9, 12, 16, 19, 23, 26, 30

Dr Gareth Iremonger:

June: 3, 10, 17, 24

Dr Vicky Chaplin:

May: 27-29

June: 2-5, 8-12, 15-19, 22-26, 29, 30

Nurses: Monday - Friday

District Nurses Availability:

Monday - Friday each week

**Please note the Health Centre
will be closed:**

***Monday 1st June
2020 Queens
Birthday***

Healthworks Pharmacy:
0800 347 7367

Amberley Pharmacy:
0800 924 5274

**Physio, Corry Scrivener/
Chris Dixon:**
03 315 6328

**Ring a Renovator
Dial a Decorator**

Property Maintenance & Decorating

Dean Freeman

Mobile. 021 059 4980

Email. freemandean21@yahoo.co.nz

Over 15 years
Experience
All work
Guaranteed



Diggers, Truck, Motor Grader

Gravel Supplies

Drainage

Track Maintenance

021 701 331





**DOMESTIC PLUMBING
AGRICULTURAL PLUMBING
COMMERCIAL PLUMBING
MILKING PLANTS
DAIRY CONSUMABLES
WATER FILTRATION
EFFLUENT
AG SERVICING
WATER PUMPS
COMPRESSORS
SOLAR INSTALLATIONS**

**www.stockersolutions.co.nz • 03 315 8141
31 Mountainview Road, SH 7, Culverden**

Want to get fitter??

Want to get stronger??

Want to be your best YOU??

Come and join me!!

- 1 on 1 and group personal training
- Spin Classes
- Group interval training and stretch sessions
- Pelvic floor safe fitness professional
- Online strength and fitness training

Amber Harrison Personal training- Rotherham

Amber_lawson86@yahoo.co.nz

021 395 699

Facebook- amberharrisonpersonaltrainer

Instagram- AmberHarrison_PT



PETER JACKSON
Professional Painters & Decorators

Email: info@pjpainters.co.nz

0800 PJPAINT
7 5 7 2 4 6 2

www.pjpainters.co.nz

**INTERIOR PAINTING
EXTERIOR PAINTING
WALL PAPERING
SPRAY PAINTING**

**INTERIOR PLASTERING
EARTHQUAKE REPAIRS**



THE ULTIMATE SURFACE FOR YOUR COW LANES

Quality doesn't cost, it pays!

AGS lime and rotten rock provides an even, smooth & durable surface for your cow lanes

- Sharp & hard rock causes stress & loss of production
- Improves cow flow to and from the shed
- Reduce herd lameness

New & existing cow lanes & maintenance

From start to finish – We do it all

Call us today for your cow lanes or general earthmoving needs



AGS Earthmoving Ltd

Our quick efficiency & high standard of work delivers a tidy job – Everytime!

AARON - 027 220 7232 | GRANT - 027 386 8106 | SUE - 027 428 2240
EARTHMOVING | QUARRIES | OFFICE

GRAMPIANS ANGUS

Cattle Country

Race you there!



CONTACT US
FOR MORE
INFORMATION

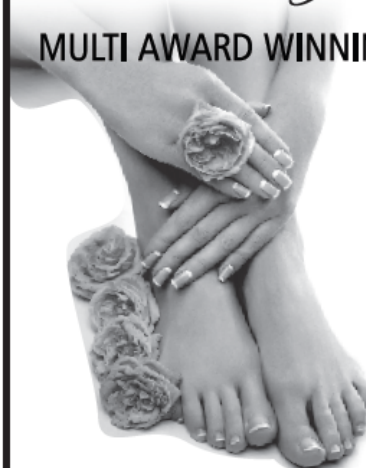
2020 DATES...

BULL WALK Thursday 21st May
BULL SALE Friday 12th June

🏠 420 Cascade Rd, RD2, Culverden, 7392 | 📞 027 258 0732
✉️ grampians@amuri.net | 💻 www.grampiansangus.co.nz
Find us on 📷 & 📘 @grampiansangus or www.facebook.com/grampiansangus

Beauty & You

MULTI AWARD WINNING



FACIALS
WAXING
TINTING
MASSAGE
MANICURES
PEDICURES
SPRAY TANS
ELECTROLYSIS

P 03 314 7692



Shop 16, Brackenfields Complex
133 Carters Road, Amberley

www.beautyandyou.co.nz

KAIWARA ANGUS

"BRINGING THE BEEF SINCE 71"

New Zealand
ANGUSPURE®



PROVEN HILL COUNTRY GENETICS
PH GEORGE JOHNS, 0221983599, CULVERDEN
FOLLOW US ON FACEBOOK

BULL WALK THURSDAY 21 MAY
BULL SALE THURSDAY 11 JUNE



VALLANCE MACHINERY LTD

AGRICULTURAL EQUIPMENT

PARTS & SERVICING

TRACTOR SALES

FARM MACHINERY SALES

ON SITE SERVICING & REPAIRS

STOCKISTS OF

FIELDMASTER

SPAREX

BARE CO

FMS

RATA

MORRIS OIL

OUR SERVICES

3 SERVICE TRUCKS - ANY AREA

4 MECHANICS

SERVICING ALL TRACTORS

DIGGERS & MACHINERY

HYDRAULIC HOSE REPAIRS

CONTACT US

342 OXFORD ROAD

FERNSIDE

03 313 6465

parts@vallance.co.nz

sales@vallance.co.nz



PAGET CONSTRUCTION LTD

Lived in Amuri area & worked in Hurunui District for the last 20 + years

CONTACT US

37 Wilkin Street

Rotherham

03 315 6333 or 027 243 2372

www.pagetconstruction.co.nz

STOP BIRDS

**hail, leaves, snow & vermin from
blocking & damaging your spouting**

Quality materials: BHP Colorbond steel mesh with unique patented louvre will even keep out pine needles. Will not rust or sag with age or load. 10 year warranty, range of colours
Proven in Australia & New Zealand over the last 15 years.

**FOR SAFE, PURE DRINKING WATER
FROM YOUR ROOF.**

NOW AVAILABLE : STAINLESS STEEL MICRO MESH

Call **Rohan anytime Mon-Sat** for
a no-obligation assessment & quote
03 982 8850 0800 486532

GumLeaf
www.gumleaf.co.nz