

# PROSPECTUS

**SOUTHERN  
CROSS  
CAMPUS  
COLLEGE**  
AUCKLAND / NEW ZEALAND

SOUTHERN CROSS CAMPUS



INA TE MAHI HE RANGATIRA





*Hundreds of years ago brave Polynesian seafarers explored the Pacific in search of new lands.*

*To find New Zealand they followed seasonal winds, seabirds and mighty whales migrating south. By day they pursued the sun high above the horizon, and beneath the starry heavens by night they steered between Matariki and Tautoru – and followed Te Taki o Autahi the Southern Cross.*

**Not just a place to learn, but somewhere to dream, to flourish and to grow. A place where we support young people on their journey to becoming confident young adults, helping them develop resilience, fulfil their potential, set and reach goals and ultimately reach for the stars.**





## OUR VISION

At Southern Cross Campus, we are committed to student success – learning comes first. We believe it is our job to help our students to develop into proud, confident and resilient learners, who strive for personal and academic excellence.

We are committed to ensuring the best learning experiences for our learners, applying quality modern learning practices and having high expectations of all our learners.

We live our values through the Southern Cross Campus values; Respect, Relationships, Responsibility and Resilience. Our vision of "working together for success" enables us to work together effectively for the benefit of our students.

**Robin Staples (Principal)**  
**Maila Alatasi (Director)**

## SCHOOL BOARD OF TRUSTEES CHAIR

We are ambitious for success and aspirational for our community. We make no apology for demanding excellence from our students and set the bar high for performance and behaviour. We believe that learning is more than what the students see and hear in the classroom so offer a wide range of real contexts for learning outside of our school gates. The key to any education system, though, is the quality of the teachers. We're fortunate at Southern Cross Campus to attract some outstanding, dedicated, professional, highly qualified and experienced teachers.

Our school is rightly a beacon in Mangere, recognised by the fact the Government is rebuilding our campus into a modern learning environment. On top of our educational success, our sports teams and cultural groups regularly win regional and national competitions coached by our parents, whanau and community.

I'm confident that by sending your child to Southern Cross Campus not only will they have a great education but they will turn out to be wonderful adults.

**Peter Parussini**



## HIGH EXPECTATIONS

*We have clear and simple expectations for all of our students.*

All students must:

- \* Attend school everyday and be on time. We expect 100% attendance and punctuality.
- \* Take personal responsibility to be fully equipped for lessons everyday and arrive with the right attitude for learning.
- \* Display excellent behaviour, be resilient and determined to achieve their best.
- \* Build positive relationships with others founded on respect and irrespective of difference.

## CURRICULUM

We offer a wide ranging curriculum with the distinct advantage of students enjoying learning in a small whanau oriented environment. The curriculum offered at the college is focused around students developing meaningful pathways for their chosen careers beyond school. Students have a wide choice of subjects which aim to cater for the range of interests, abilities and skills of the students. NCEA courses are constructed so that students can choose to study courses at a range of levels regardless of their chronological age. The number of students who are accelerated is growing with more students entering scholarship level subjects.





# SOUTHERN CROSS CAMPUS LEARNER PROFILE

*Vision: Teachers and Students Working Together For Success*

Collaborative, confident achievers  
Resilient and strive for personal excellence  
Proud of who we are and our cultural heritage  
Honest, respectful

Globally connected citizens who contribute positively to community

Multi-literate and digitally savvy

Critical, creative and innovative thinkers, who reflect, question and take risks

Building meaningful personal pathways

## SOUTHERN CROSS CAMPUS LEARNER PROCESS

### LAUNCH

#### **Ask the Question**

Wonder  
Be curious  
Inquire  
Have-a-go  
Unpack the words  
Set goals



### NAVIGATE

#### **Build New Knowledge**

Use what I already know  
Make relevant connections  
Clarify  
Ask questions  
Check for understanding



### ROUGH SEAS

#### **Revisit the Questions**

Respond to challenges  
Take risks and make mistakes  
Be resilient  
What do I already know?  
What is not clear?  
Ask others  
Which strategy could I use?



### ANCHOR

#### **Articulate what I have Learnt**

What do I now understand?  
Evaluate  
Celebrate success  
Decide on next steps







## ACADEMIES

Academies are focused on career-based training and progression into the industry, whilst preserving the integrity of life-long learning and educational practices. This approach enables students to develop career pathways with specific training to be ready for employment or sector-specific higher training opportunities. Academies give students 'real life' training by placing them in industry for up to two days per week.

Academies include:

- \* Automotive
- \* Building Construction
- \* Hospitality

The benefits of Academy based learning are higher student engagement, authentic contexts and the development of work ethics through a practical training environment.







## PASTORAL CARE AND STUDENT SUPPORT

Pastoral Care at Southern Cross Campus endeavours to provide a safe social, emotional, cultural, and physical environment in order to foster the learning, growth and wellbeing of students.

These principles and values are the cornerstone upon which we build the strong, positive and respectful relationships that typify and are integral to the daily life of the Southern Cross Campus community.

The Pastoral Care team are on site every day to support our students and include:

- \* 4 House Leaders
- \* 3 Guidance Counsellors
- \* 2 Social Workers
- \* 2 Nurses
- \* A doctor

All students belong to a House system, a foundation for building identity, purpose, competition, achievement and celebration. The house system also offers a framework for creating student leadership opportunities where older students proactively assist the younger students with advice and support. It is a positive extension to the family and community notion in our school where students feel more connected.





## CULTURAL

Our students have many opportunities to learn, embrace and celebrate their own culture as well as the many cultures that make up our campus. We do this through exciting school events such as cultural week, the various language week celebrations, international travel as well as competing in regional events. The ASB Secondary School Polyfest is an annual event where we have a proud history of excellence. Our cultural groups are recognised for their performances through the many prizes and placings that we gain every year.







## ARTS

We offer an extensive Arts programme through our visual arts, music and drama departments, along with exciting extra-curricular opportunities.

Participation and excellence in the Arts is encouraged and rewarded. Our students have an integral role in wider community programmes such as the Southside Rise productions run by the well-known Black Friars Theatre company as well as create their own opportunities by staging school productions and year level plays to our community at the Mangere Arts Centre.





## SPORTS

Southern Cross Campus students and staff are passionate about sport and physical activity. It is an integral part of student life and there are many opportunities available. Involvement in sport is a strong motivator for many students and leads to increased academic performance, driving up standards across the school.

### Summer codes:

- \* Waka Ama
- \* Volleyball
- \* Tag Football
- \* Touch
- \* Athletics
- \* Tennis

### Winter codes:

- \* Rugby
- \* Rugby League
- \* Netball
- \* Basketball
- \* Football

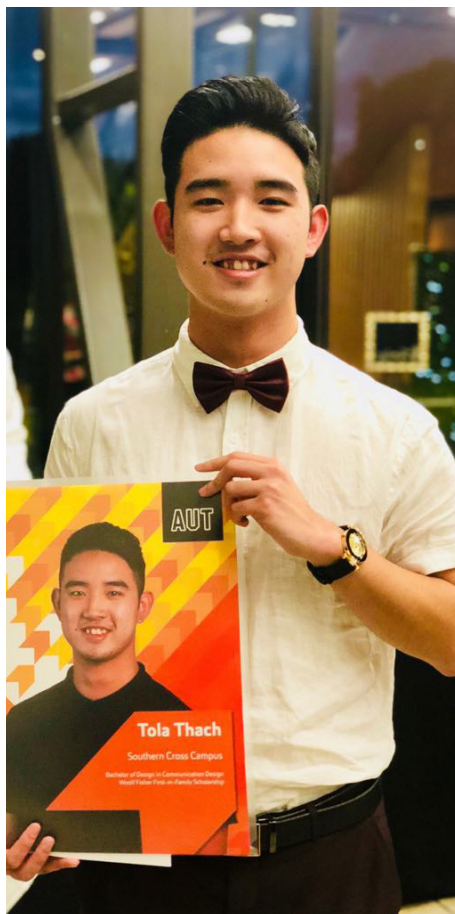




## ENRICHMENT ACTIVITIES

Southern Cross Campus is a dynamic and exciting school where the Visual Arts and the Performing Arts are seen as vital to the health and well-being of our students and an important part of their preparation for life after schooling. There are many groups and programmes such as Science club, sustainability group, peer support and the gifted and talented programme are only a few of the programmes where students build relationships and leadership skills, are encouraged to use their 'voice' and make positive change within our school and wider community.

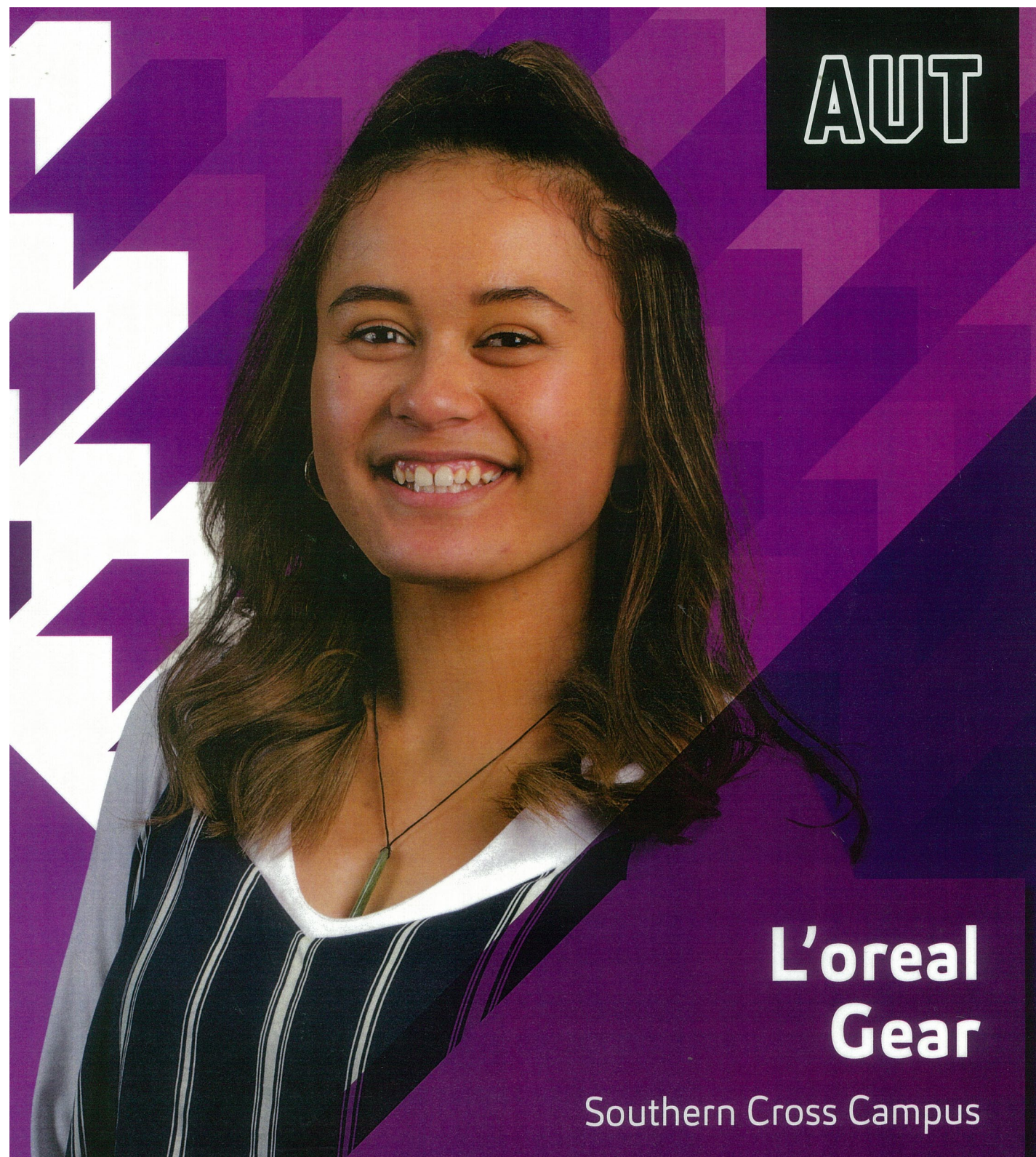




## THE SOUTHERN CROSS EXPERIENCE

Our staff are passionate and dedicated to transforming the lives of our students through high quality teaching, extensive support to ensure students gain the best possible academic outcomes and exposure to rich learning experiences inside and outside of the classroom.

We are carving out a new story for our students and our local community founded on a proud history of working together for success.







253 Buckland Road, Mangere, Auckland, 2024

Telephone: +64 (9) 255 0404

Email: [admin@southerncross.school.nz](mailto:admin@southerncross.school.nz)

**[www.southerncross.school.nz](http://www.southerncross.school.nz)**