

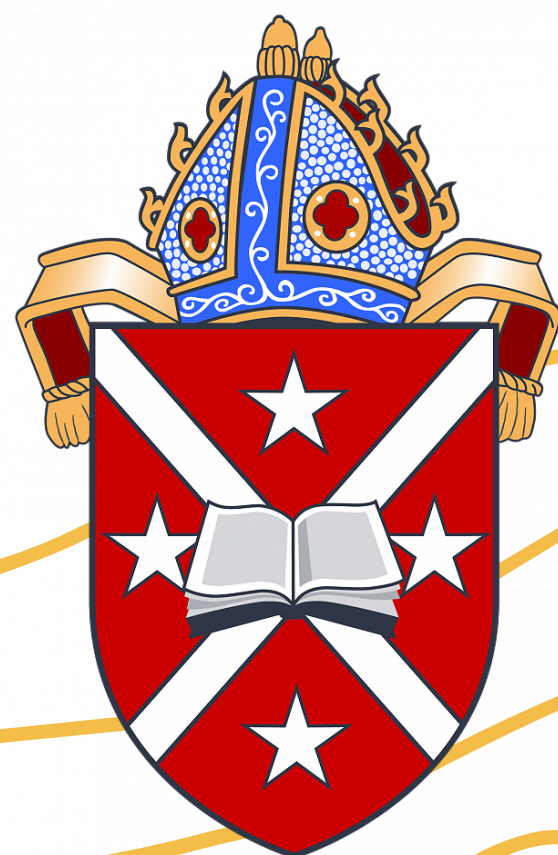
Children's Activity Booklet



The Builders of
the Anglican
Church in
Aotearoa

VETS

at home edition 3.5



Gospel Reading

When Jesus saw the crowds, he went up the mountain; and after he sat down, his disciples came to him. Then he began to speak, and taught them, saying:

“Blessed are the poor in spirit, for theirs is the kingdom of heaven.

“Blessed are those who mourn, for they will be comforted.

“Blessed are the meek, for they will inherit the earth.

“Blessed are those who hunger and thirst for righteousness, for they will be filled.

“Blessed are the merciful, for they will receive mercy.

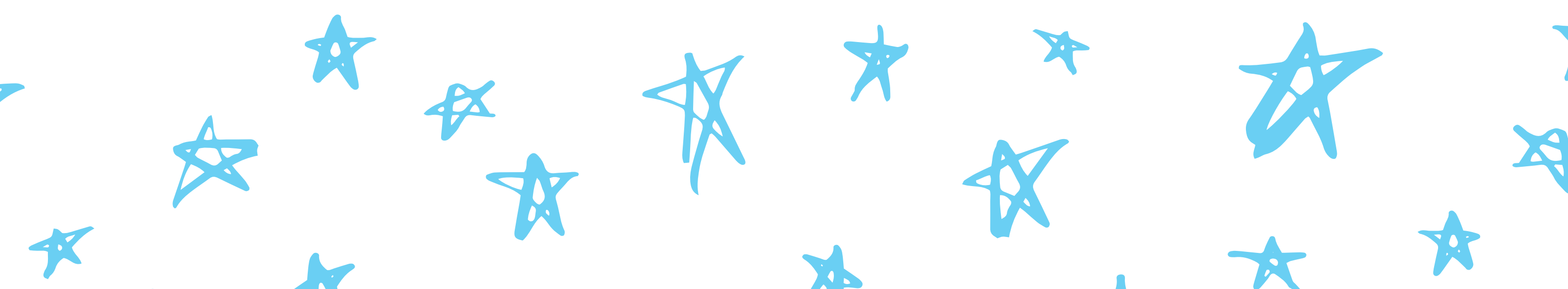
“Blessed are the pure in heart, for they will see God.

“Blessed are the peacemakers, for they will be called children of God.

“Blessed are those who are persecuted for righteousness’ sake, for theirs is the kingdom of heaven.

“Blessed are you when people revile you and persecute you and utter all kinds of evil against you falsely on my account. Rejoice and be glad, for your reward is great in heaven, for in the same way they persecuted the prophets who were before you.

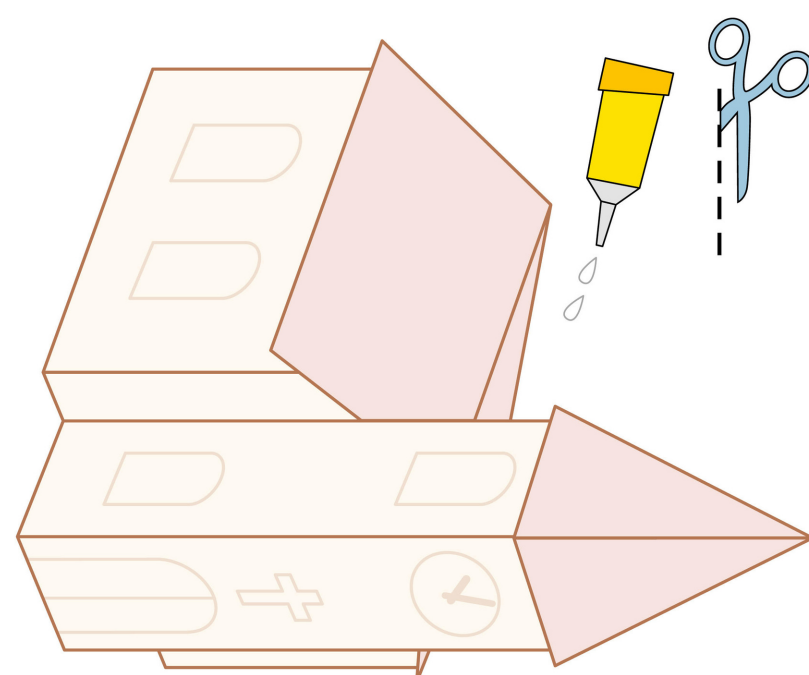
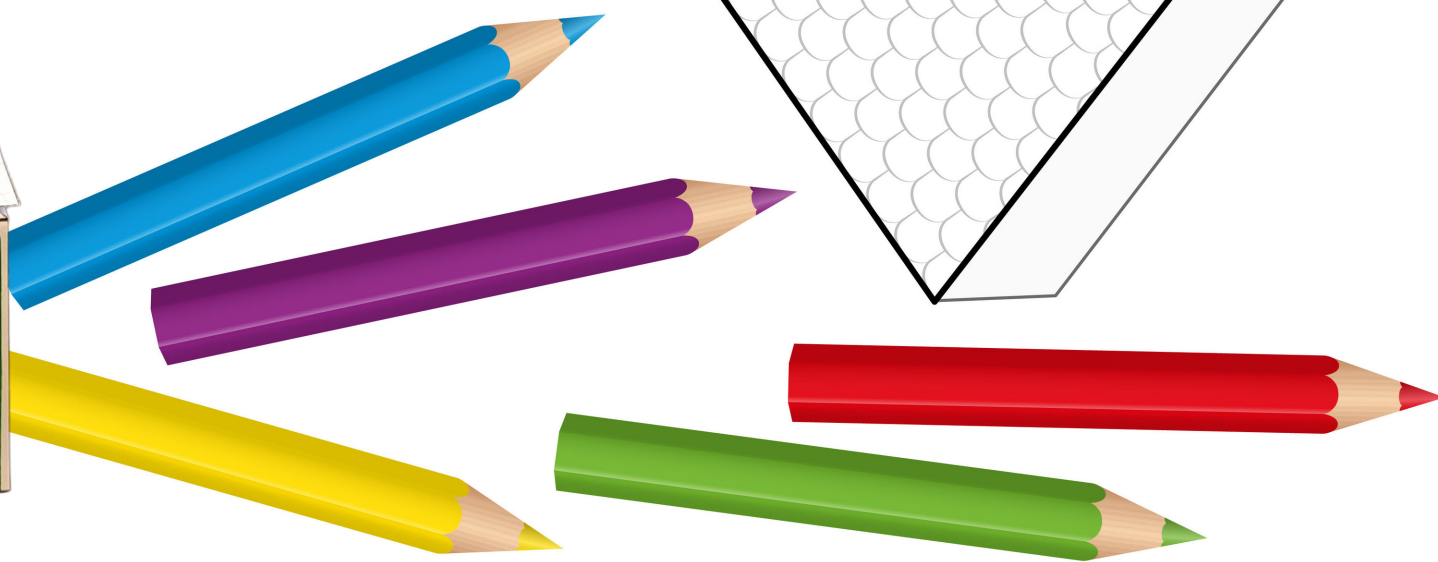
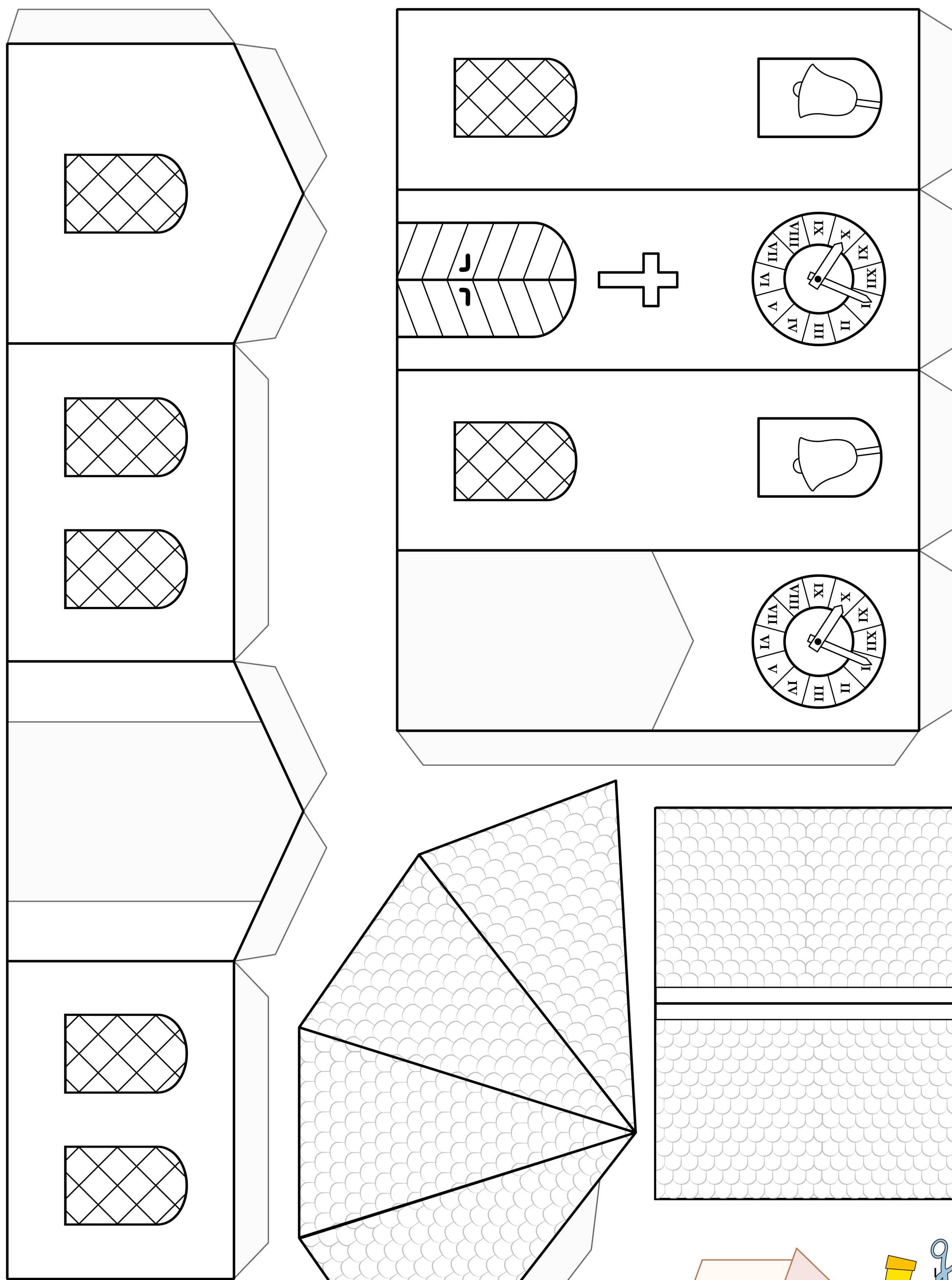
Matthew 5:1-12



crafts

Build the Church

Template



connect the dates

What to do:

Connect from left to right the important dates in our Diocesan history

1814

Samuel Nevill becomes the 1st Bishop of Dunedin

It's the job of all of us to build the church

1840

Bishop Penny is also the 1st female Diocesan Bishop in the Anglican Communion

1842

The Diocese of Dunedin was formed.

1844

Samuel Marsden was the first missionary in Aotearoa. Chief Ruatara invited Marsden. On Christmas 1814 the first Christian service took place in Oihi in Northland.

1869

Bishop Selwyn, the first Anglican Bishop in Aotearoa visited Otago for the first time.

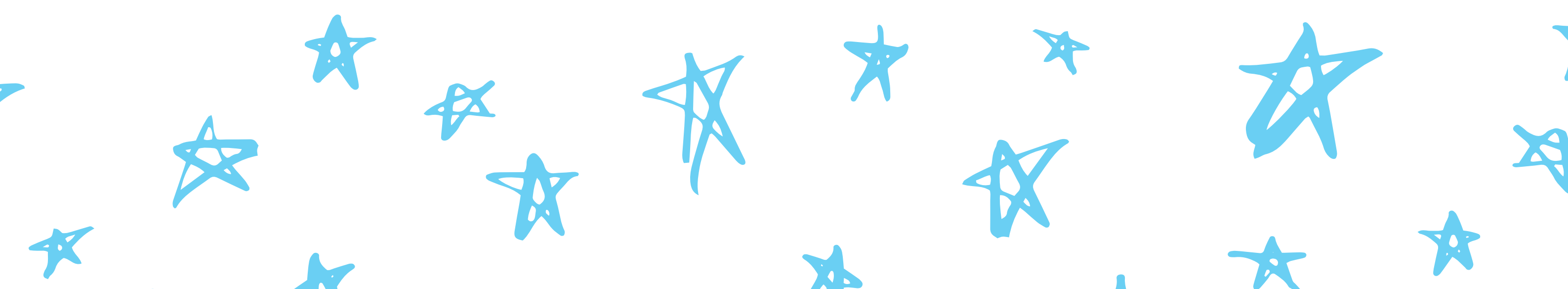
1871

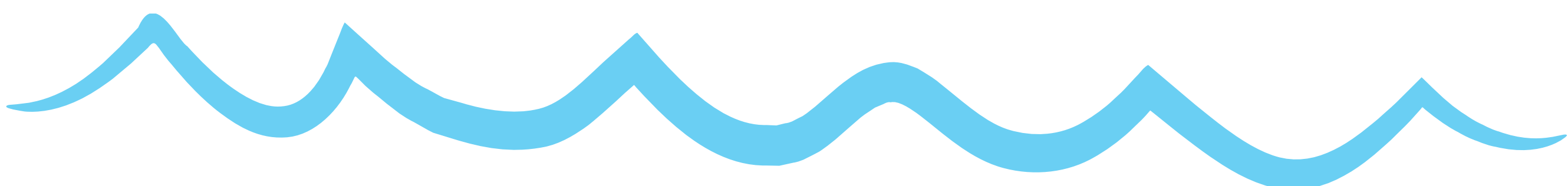
Matane Te Whiwhi and Tamihana Te Rauparaha inspired by Luke's Gospel went to the Bay of Islands and asked for a missionary for Otaki. Te Whiwhi and Te Rauparaha became missionaries to Te Wai Pounamu. Tamihana was brave to come here as he had previously attacked Ngai Tahu. He also accompanied Bishop Selwyn on his first visit to Otago.

1990

Methodist James Watkin set up a mission station at Karitane, he was the first missionary in the South Island and in May 1840 he preached the Gospel for the first time in the South Island. He started schools and trained Kai Tahu missionaries. Watkin published Otago's first book, a book of Maori prayers and hymns.

2021





Builders of the Church

| | | | | | | | | | | | | | |
|---|---|---|---|---|---|---|---|---|---|---|---|---|---|
| H | R | T | K | K | A | I | T | A | H | U | T | N | P |
| S | U | L | L | I | V | E | N | L | E | U | M | A | S |
| K | H | N | I | K | T | A | W | S | E | M | A | J | L |
| I | I | G | W | M | I | S | S | I | O | N | A | R | Y |
| H | L | A | T | N | Y | W | L | E | S | O | I | O | I |
| W | A | V | B | I | S | H | O | P | R | E | W | T | K |
| I | N | A | R | H | E | I | I | A | A | H | H | A | R |
| H | A | A | H | O | S | W | E | S | L | A | R | G | N |
| W | W | E | C | E | I | T | R | E | A | I | I | O | H |
| E | J | O | H | I | O | H | P | U | T | E | I | E | R |
| T | R | L | A | A | L | S | I | A | T | E | T | E | U |
| A | I | E | E | I | O | G | N | K | C | A | I | Y | U |
| M | N | E | H | G | I | E | N | E | O | W | R | U | W |
| T | E | R | A | U | P | A | R | A | H | A | R | A | I |

- BISHOP
- GOSPEL
- KARITANE
- JAMES WATKIN
- RUTARA
- ANGLICAN
- OIHI
- SELWYN
- TE WHIWHI
- KAI TAHU
- AOTEAROA
- OTAGO
- SAMUEL NEVILL
- TE RAUPARAHA
- MISSIONARY

Find the word in the puzzle.

Words can go in any direction.

Words can share letters as they cross over each other.