



NEW ZEALAND RED CROSS MIGRATION PROGRAMMES

Ōtepoti (Dunedin) Stakeholder Update #1 July 2022

Working well together to support former refugees during settlement

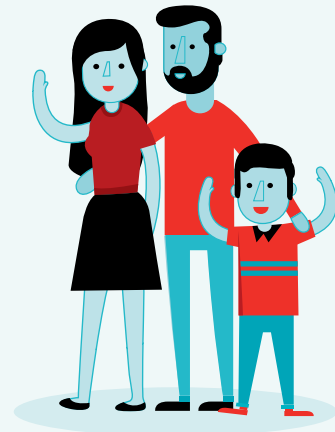
Kia ora koutou,

As you may have seen, on 14 June 2022 Immigration New Zealand announced that New Zealand Red Cross will continue to provide settlement support for former refugees in Ōtepoti for the next six years, beginning on 1 July 2022. We are delighted that our Pathways to Settlement (P2S) team will have the opportunity to lead settlement service delivery in the region throughout this period.

Ōtepoti will continue to welcome new Kiwis who are originally from Syria and Afghanistan. We look forward to their ongoing settlement and to them receiving a warm Otago welcome.

We acknowledge the value of our cooperative work with regional stakeholders, volunteers and community groups who support settlement. This ensures the best possible outcomes for former refugees settling in Ōtepoti. I wish to thank you for your work during the challenging times of Covid-19 and the lockdown periods and I now look forward to our work together in a new, brighter, post-Covid environment.

In addition to our P2S service, as you know, we provide employment support, Pathways to Employment, for former refugees and we intend to begin a tailor-made service for refugee-background young people.



This Stakeholder Update #1 provides a summary of our services for your information.

Please feel free to contact our Ōtepoti team if you require any further details about our work and/or wish to volunteer with our P2S service.

Ngā manaakitanga

Sue Price

General Manager, Migration

WHAT WE'RE DOING



PATHWAYS TO SETTLEMENT (P2S)

During the next year, Immigration New Zealand plans to resettle up to 115 former refugees in Ōtepoti. We will support these new Kiwis for up to two years. Our work also includes working with new Kiwis who arrive under the 'Refugee Family Support Category' visa. We look forward to collaborating with many of you during the orientation sessions and throughout the delivery of our settlement work in Ōtepoti.

P2S VOLUNTEER SUPPORT - CURRENTLY RECRUITING

Volunteers are a core part of our P2S work. Their support makes it easier for former refugees to feel safe again, get used to new systems, new cultures, learn 'Kiwi' English and build networks. Following participation in a training programme they become an integral part of a skilled team, working with people's strengths to overcome the challenges of settling in a new place. We are currently recruiting for new volunteers.

If you or anyone you know is interested in volunteering please contact the service centre or Red Cross via the 0800 number.

P2S HOME SET UP - COLLECTING HOUSEHOLD ITEMS

Immigration New Zealand provides large items of furniture for the rental properties and P2S turns these houses into homes with the provision of smaller household items. This includes good quality bedding, kitchen and laundry items and pantry supplies. If you or any of your family and friends have extra small household items that are in good condition, you're welcome to donate them to Red Cross for new Kiwis in the city.



PATHWAYS TO EMPLOYMENT (P2E)

P2E helps new Kiwis prepare for work in Ōtepoti. Our team works collaboratively with local businesses to find the right employment match for businesses and our clients. We support both partners during the initial stages of each job placement. In Ōtepoti our work together has brought strength, resilience and social and cultural diversity to many workplaces. We look forward to continuing this work in the future and expanding our reach throughout the region.

SETTLEMENT YOUTH WORK SERVICE - PENDING START-UP

In other settlement locations throughout Aotearoa refugee background young people have benefited greatly from participating in our youth work service run by settlement youth workers, who are former refugees. This tailor-made service addresses the needs and aspirations of 12 to 25-year olds. We intend to begin this service in Ōtepoti later in 2022.

SUPPORT FOR CONVENTION REFUGEES

Our Navigator Service for Convention Refugees, which is carried out in cooperation with the Asylum Seekers Support Trust, is based in Auckland. The service is available nationally.

If you or someone you know needs the support of the navigator, please contact them: navigator@redcross.org.nz.

RESTORING FAMILY LINKS SERVICE - RFL

This Red Cross service can help you find your family if they are missing as a result of war, disaster or migration through international family tracing, they can send a message to your family where there is no other way to contact them and they can check the welfare of your family overseas where you have lost communication unexpectedly and you are concerned for their health and wellbeing. This service is available nationally.

If you or someone you know needs RFL support, here are the contact details ➡
<https://www.redcross.org.nz/request/red-cross-messages/>

Call 0800 REDCROSS (0800 733 2767)

Email familylinks@redcross.org.nz

YOU ARE WELCOME TO VISIT US OR CONTACT US

We are back in the service centre at [31 York Place](#) each working day from 8.30 until 4.30. And you can contact us at 0800 RED CROSS or 0800 733 27677.

The call centre will connect you with an Ōtepoti staff member.

