



UPDATE | June 2023

Making Ōtūmoetai Peninsula Accessible

In response to community feedback on the Accessible Streets for Ōtūmoetai Peninsula project in 2022 an early design has been developed to make it safer and easier to drive, cycle, catch a bus, or walk to key places within the Ōtūmoetai Peninsula, and into the City Centre. This notice provides you with some background and detail on the changes proposed near the schools in this area and how the school community can have their say.

One-way system

The area near the schools along Charles Street and Windsor Road is heavily used by residents, school students and community attending events. We know how important parking is along here, as well as managing the conflict between vehicles, cyclists, and high pedestrian road use.

This section proposes a two-way cycleway on the school side of Windsor Road. To accommodate the two-way cycleway and retain parking on both sides of the road, the design introduces a one-way system on Charles Street and Windsor Road between Ngatai Road and Anne Road.

The proposed additional details and features include:

- The one-way system is proposed to extend to Anne Street, accommodating the large number of school buses that use this road. An increase in the width of the shared path outside Ōtūmoetai Intermediate School is also proposed to assist students walking to and from school.
- We want to maintain as much parking as possible given the sporting and other large events in the area. The proposed one-way system provides a balanced approach between pedestrian safety, access to facilities such as schools and businesses, and resident's property access requirements.
- Restricting Windsor Road traffic to one-way southbound from Ngatai Road to Anne Road has safety and operational benefits around the schools. However, this option does require one-way traffic to re-route onto Anne Road and Queen Street, which potentially means more traffic will be using these streets.

- This option provides the highest number of on-street carparking spaces, which caters for demand from nearby schools and recreation centres.
- A 30km/h speed limit for the area was one of the options presented. Based on community feedback, it is now proposed during school times only to cover the schools on Windsor Road.

Traffic calming

As an identified Neighbourhood Street, we want to make it safer for students and residents who live here. A Neighbourhood Street area is proposed on Queen, Princess and Anne Roads near Bellevue School, Ōtūmoetai Intermediate School and Ōtūmoetai College.

We propose to use traffic calming measures such as speed tables or speed bumps and provide improved pedestrian and cycling crossing points that slow vehicle speeds. We want to provide a walkable, bus and cycle friendly, safer environment, which supports people of all ages and abilities, including people with reduced mobility levels.

What will the changes look like?

You can view the planned street design in detail at the community open day sessions or online at the Accessible Streets Ōtūmoetai website (refer to details below). Although some of the detail is lost in print, a few key images are shown here with green representing a two-way separated cycleway and blue representing a shared cycle and pedestrian path:

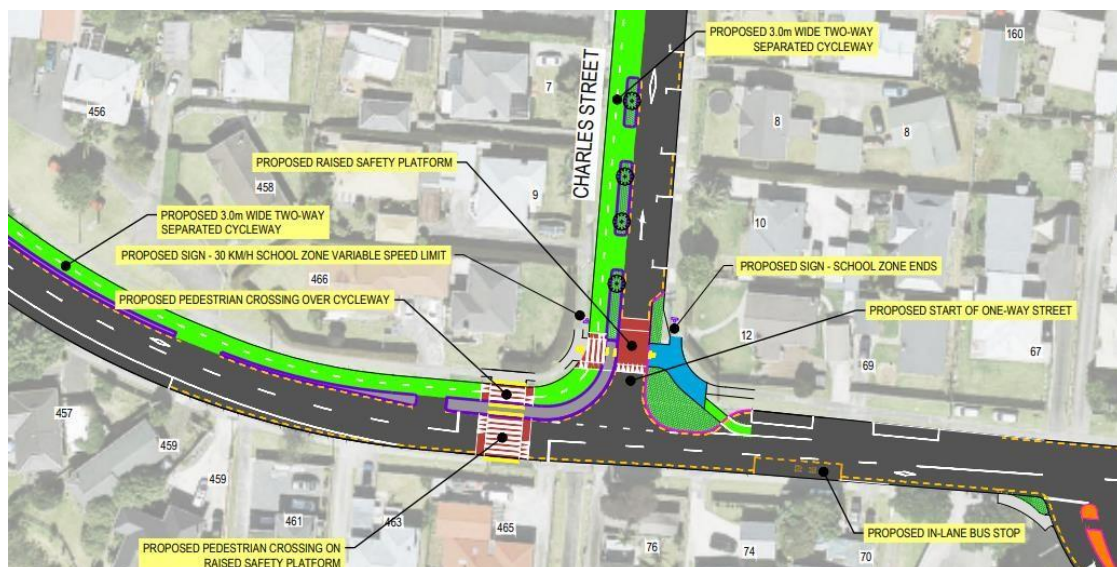


Image 1: Proposed start of one-way system at Charles Street

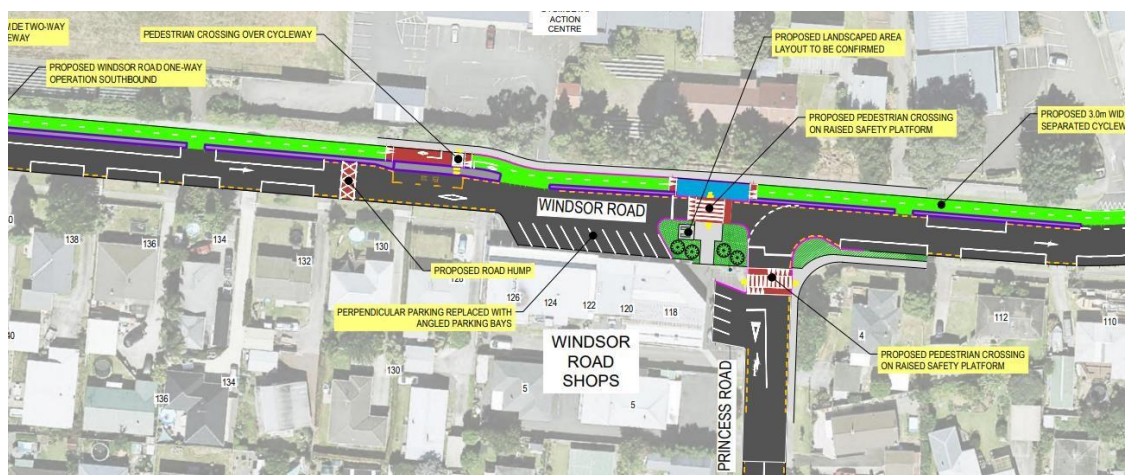


Image 2: Proposed one-way system at Windsor Road shops

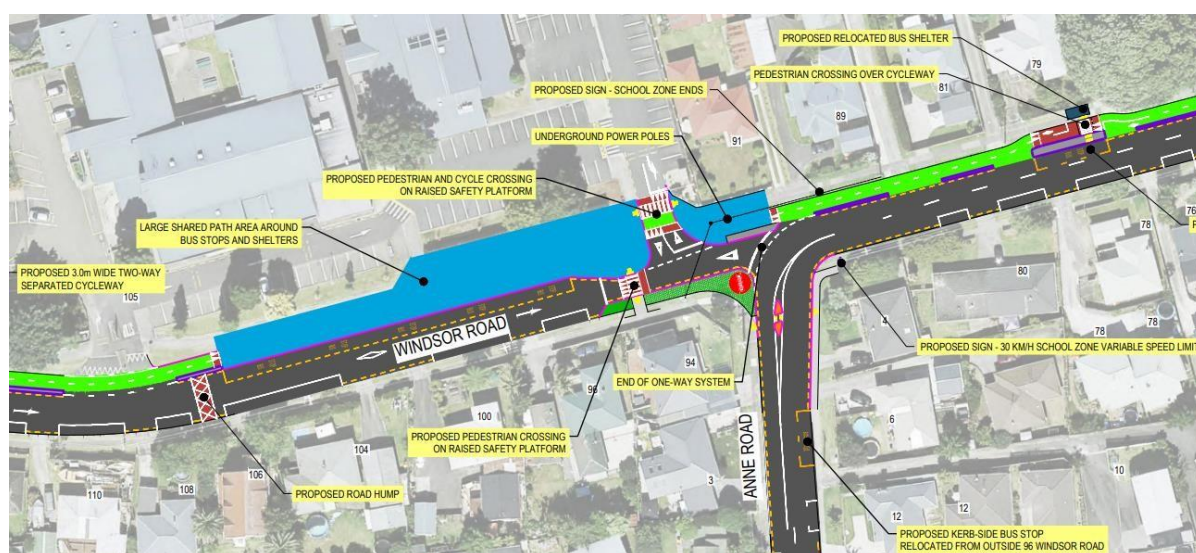


Image 3: Proposed end of one-way system at Anne Road intersection

How can the community find out more information?

In-person community drop-in sessions

We encourage you to attend one of our six community drop-in sessions to find out more information on the accessible streets design and have your say. You may pop in at any of the below session times above, however the 9-11am session each day is exclusively for discussion on the Windsor Road changes.

These will be held at the Atrium Café, and conference centre, 252 Ōtūmoetai Road, on:

- Tuesday, 4 July with two sessions including 12-2pm or 4-6:30pm
- Wednesday, 5 July with two sessions including 12-2pm or 4-6:30pm

Community survey

We also want your feedback so please take a moment to complete the online survey that will be available through our website from 13 June 2023 to 12 July 2023.

Website update

At any time from 13 June 2023, you can visit the dedicated Accessible Streets web page at letstalk.tauranga.govt.nz/accessiblestreetsotumoetai or scan this QR code using your phone camera to understand more about the improvements proposed and anticipated timelines.



For specific questions and concerns, contact Tauranga City Council on 07 577 7000 or at <https://www.tauranga.govt.nz/council/contact-us>, or email our team at accessiblestreets@tauranga.govt.nz.

Ngā mihi

The Accessible Streets Team