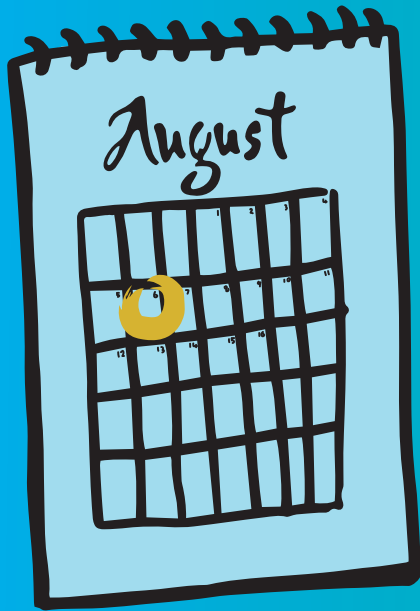


HOW TO APPLY



SET A REMINDER!

Applications open August 6 and close September 3.



PREPARE AN AMAZING CV AND COVER LETTER

outlining why you are passionate about working for your iwi.



mahi.ngaitahu.iwi.nz



APPLY!

What do you have to lose?

Submit your CV and cover letter on the Ngāi Tahu Employment website, mahi.ngaitahu.iwi.nz, August 6 – September 3.



SERIOUS ABOUT THIS OPPORTUNITY?

Enrol with Pūreirei, Ngāi Tahu career starters tool, for assistance stepping up your application!
You can get started now at tepouhere.ngaitahu.iwi.nz.
Enrol before August 20 to make sure you are ready!

Te Rūnanga o NGĀI TAHU