

Tai Tapu Community Centre

The purpose of the Tai Tapu Community Centre

- Provide the local and wider community with a multi-purpose space for a diverse range of uses.
- A place to celebrate events, sporting activities, social and educational gatherings, for schools, clubs, business meetings.
- Anyone in our community can benefit.

The cost of the Tai Tapu Community Centre and when will it be built

The overall cost is \$4.6 million which is being funded through a combination of the following:

- Council funding
- External fundraising, trusts and New Zealand Lotteries Commission
- Insurance receipts
- Community fundraising

The new facility is expected to be completed by approximately June 2018.

Fundraising

How you can help

We need your support actively and financially as members of our community.

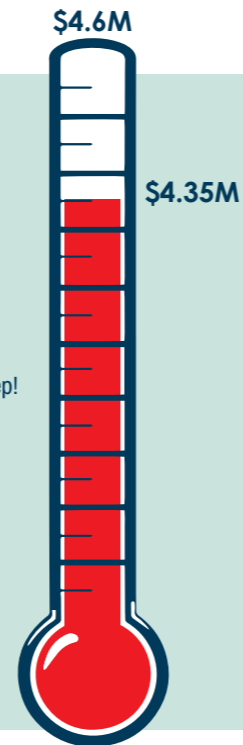
- We have an overall community target to meet of \$250,000.
- We need everyone's help to actively raise the proposed community target through local and corporate donations. Please dig deep!

Take the time to consider yourselves, your children and your grandchildren – it's your opportunity to be a part of our local future.

Further donations are greatly welcomed to support our facility:

- External landscaping
- Interior features
- Tables
- Televisions approx 4
- Chairs
- Gas fire

Thank you for your support.



South elevation of the proposed new facility



Information update for local residents – New Tai Tapu Community Centre

A social facility that allows the community to gather for sporting, business, health and wellbeing, cultural and recreational events.



Tai Tapu Community Centre Fundraising Group

Please contact James Groome
 M: 027 889 5767
 E: j.groome@@hawkins.co.nz



Tai Tapu Community Centre Fundraising Group



Information update for Tai Tapu residents

This update is from the Tai Tapu Community Centre Fundraising Group – representing the Tai Tapu Residents Association, the Tai Tapu Hall committee, the Rhodes Park Combined Sports Body, the Rhodes Park Domain Board and Selwyn District Council.

Background on community facilities

The 2010/2011 earthquakes caused significant damage to community facilities in Tai Tapu including the community hall (on Old Tai Tapu Road) and the facilities at Rhodes Park. Significant progress has been made to remediate and improve some of the facilities which include:

- new tennis/netball courts, playground and cricket facilities in Rhodes Park
- a new footbridge and footpath linking the Tai Tapu township to Rhodes Park
- native planting near facilities to provide an attractive environment.

Over the past two years we have looked at the future of the community hall and the Rhodes Park pavilion. Both of these facilities faced significant challenges and cost to repair to meet the current building code. The community hall required earthquake strengthening to continue to be used in the future which was estimated to cost approximately \$600,000. Both facilities were outdated and would have required extensive modernisation to make them attractive to use.

In 2015 a joint working group was formed involving the Hall committee, the Tai Tapu Residents Association, the Rhodes Park combined sports body, and the Rhodes Park Domain Board to look at the future of community facilities in Tai Tapu. The group decided the best strategy was to pool available resources and build a new joint community/sports facility on Rhodes Park which would better meet the future needs of the Tai Tapu community.

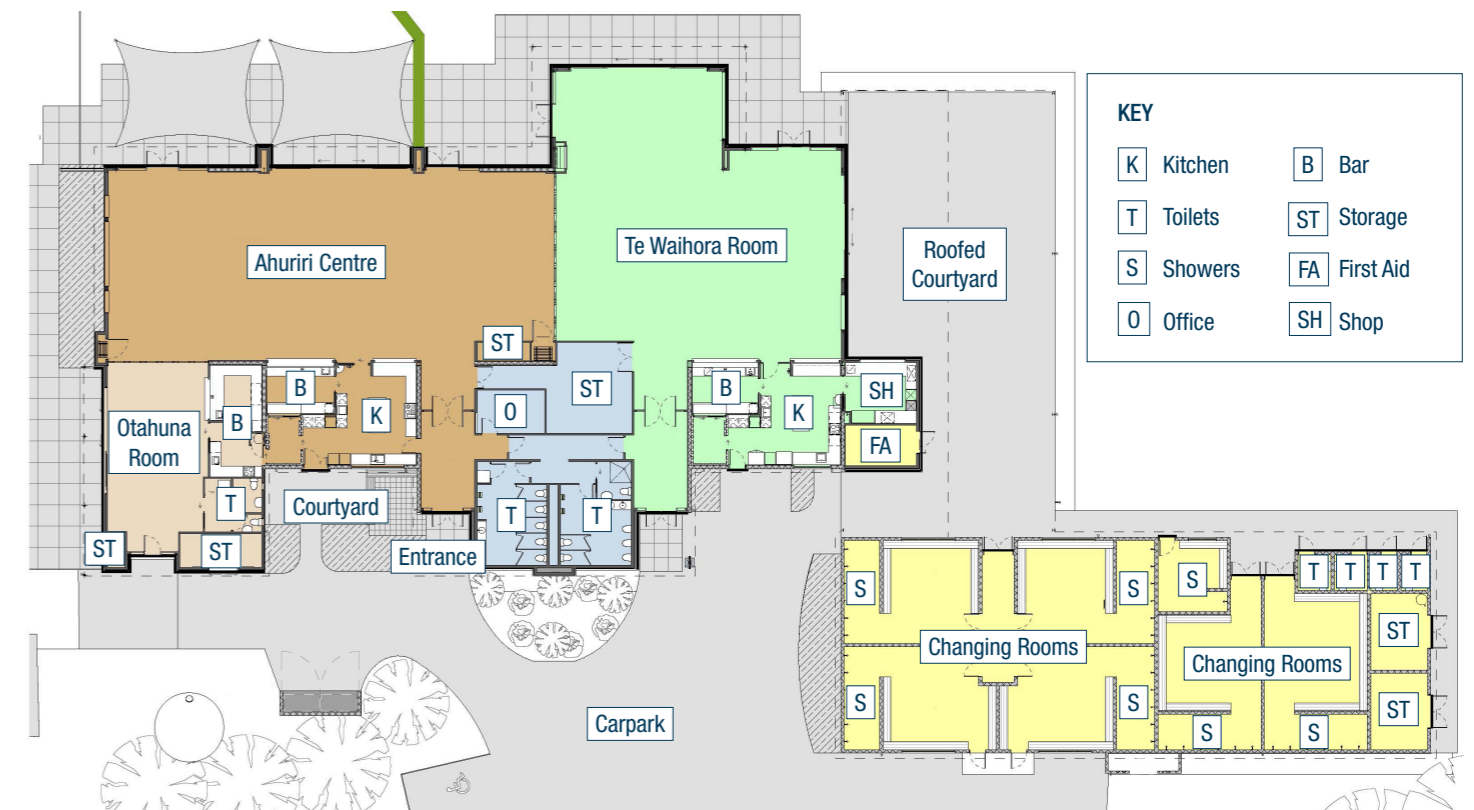
An outline of the proposal to create a new joint community/sports facility on Rhodes Park was put to the community at the Tai Tapu school fair, through the Tai Tapu community facebook page and through community websites. The feedback on the idea of creating a combined facility at Rhodes Park was resoundingly positive with 93% of respondents supporting the proposal.

The old community hall was demolished in late 2016, and construction of the new facility at Rhodes Park is now under way.



Rhodes Park Domain

Proposed facility floor plan*



The new combined community building will include:

- an indoor community lounge space for up to 200 guests (120 banquet) with kitchen and bar
- combined sports lounge with kitchen and bar
- covered outdoor area for community and sport functions
- changing rooms for up to six sports teams
- small sports club lounge and community meeting facility.

* Proposed floor plan concept could be subject to change depending on the levels of funding raised.



Artist's impression of the new community centre