



## "WET COMBING"

### Method of Head Lice Treatment

**NOTE:** This method will break the head lice / kutu cycle and will **only** work if instructions are followed carefully for three weeks. Continue until no evidence of live lice / kutu are found.



#### USE THIS METHOD EVERY THIRD DAY

1. Wash hair with shampoo and rinse.
2. Apply plenty of conditioner, do **NOT** rinse out, leave hair wet, lice / kutu are less able to move in wet hair. (Do not towel dry; however a towel over the shoulders may be more comfortable).
3. Use a clean hair brush or broad toothed (grooming) comb to remove tangles. (Hair brushes and combs can be treated by soaking in **HOT** water for 10 minutes every time they are used while head lice are present).
4. Divide hair into sections and fasten off the hair that is not being worked on at this time (as hairdressers do).
5. For the next 20 minutes, work systematically through each section of hair using a fine-toothed comb. Starting with the teeth of the comb touching the scalp at the hair roots, slowly slide the comb through to the end of the hair.
6. Clean comb on a tissue, paper towel, cloth or rinse in running water to remove any lice / kutu, nits / eggs or skin flakes.
7. Repeat till all sections have been fine-tooth combed.
8. Rinse conditioner off hair then dry in usual way.



Continue daily hair brushing both night and morning. Check for head lice weekly.

## Head Lice / Kutu Facts and Wet Combing Parent/Caregiver Information

## āi child health

Public Health Nursing Service

Free Health Support  
For Our Children

he whakaaritanga hauora koreutu mo nga  
tamariki katoa



### NIT KIT CHECK LIST

1. Wash hair, apply conditioner.
2. Comb with fine-toothed comb.
3. Repeat procedure every **third** day for **three** weeks.

Day 1 ..... ☐

Day 3 ..... ☐ **FINISHED WEEK 1**

Day 6 ..... ☐

Day 9 ..... ☐

Day 12 ..... ☐ **FINISHED WEEK 2**

Day 15 ..... ☐

Day 18 ..... ☐

Day 21 ..... ☐ **FINISHED WEEK 3**

Day 24 ..... ☐

Ref.6837

Issued By: Public Health Nursing Service,

Child Health, Christchurch Hospital

Authorised By: Nursing Director, W&CH Issued: March 2012

## Canterbury

District Health Board

Te Poari Hauora o Waitaha

## Canterbury

District Health Board

Te Poari Hauora o Waitaha

☼ Head lice are small flat insects 2-3 mm long that live in the hair where they breed and feed 5-6 times a day on the blood from the scalp. They can be caught by anyone and breed throughout the year.

☼ Head lice hang onto the hair with hook-like claws at the end of each leg; they cannot fly, jump or live on animals but crawl from head to head during close contact. They may also be spread from sharing hats, head gear, combs or brushes and will remain on the hair after swimming or bathing / showering.

☼ They do not cause other diseases.

☼ They live up to 40 days on the human scalp and although they can survive for 2 days away from the human scalp they are unlikely to reproduce. A female louse can lay up to a 100 nits (eggs) in her lifetime. Nits look like small, whitish / pale grey specks about the size of a pin head and are glued to the hair shaft. Nits are laid very close to the scalp and grow out with the hair shaft; they can be very difficult to remove, unlike dandruff, which moves easily off the hair shaft.

☼ Nits hatch after 7-10 days and mature lice can live for 40 days.

☼ After hatching the nit is white and once 1cm away from the scalp they are usually dead or empty shells.



☼ **What to look for:**

- Small red / brown or grey insects and tiny whitish / pale grey eggs attached to the hair shaft close to the scalp (the eggs are easier to see than the louse).

- Tickling feeling in the hair, unusual itching / scratching of the head and neck.
- Small red marks on the scalp, neck or behind the ears (head lice bites).

☼ **What to do:**

- In good light check through the hair and scalp of all household members (adults may have no symptoms). Divide the hair into small sections and use a fine toothed comb to work through the hair.

- **Only treat if insects and / or eggs are found.**

- **Treat everyone who is infected on the same day.**

☼ **How do you treat head lice?**

- Because eggs hatch after 7-10 days it is important to continue wet combing treatment for three weeks to break the breeding cycle.
- Wet combing does not need to be expensive but to be effective **instructions need to be followed.**



☼ **Other tips:**

- Brush hair every day - when lice are injured they are unlikely to re-produce.
- Use your own brush, comb, hat, headgear, tie long hair back.
- Check all family members' hair weekly.
- Soak hair brushes and combs in hot water for 10 minutes each week.
- Wet comb once weekly for early detection.
- If desired you can hot wash and / or dry bed linen and towels and vacuum.
- Discuss treatment options with your Public Health Nurse, Chemist or Doctor.
- Only use insecticide products designed for human use.

**TO ENSURE EFFECTIVENESS, WHATEVER TREATMENT YOU DECIDE TO USE FOLLOW THE INSTRUCTIONS CAREFULLY, AS COMBINING WET COMBING AND INSECTICIDE TREATMENT METHODS MAY REDUCE THE EFFECTIVENESS OF EITHER**

**\* Head to head contact may cause re-infestation even if treatment has been thorough \***

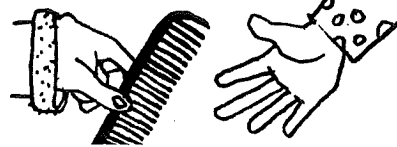


Ngā mahi tika, a, ngā mahi kahore e tika

Do's and Dont's



best not to share hats, helmets, hair ties or brushes



if sharing combs make sure they are lice and nit free

The good news

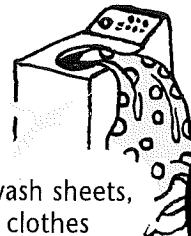
Te rongo pai



headlice can't swim so you can't catch them from swimming pools



you can't get headlice from carpets or bedding

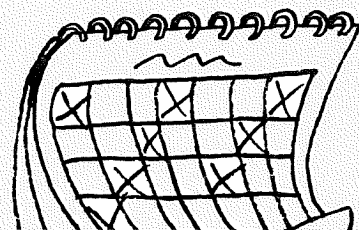


no need to wash sheets, towels or clothes

Headlice alert! Headlice found in hair

Kia Matāra! Kua Kitea  
Ngā Kutu/Riha i te Mahunga

✿ If lice have made a home in someone's hair start serious wet combing.

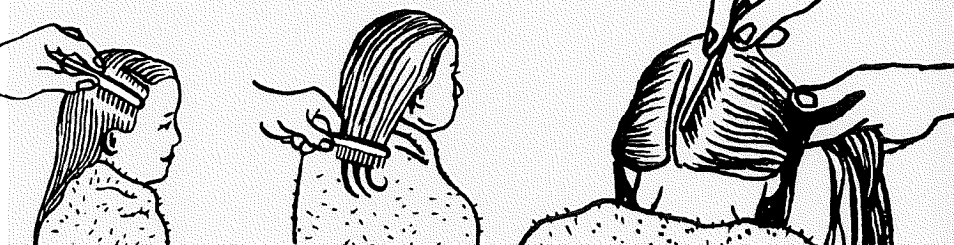


wet comb the hair every third day for three weeks

use a comb with fine and strong teeth – you may consider using a pet comb or a headlice comb from a chemist



wet hair – use conditioner if hair is thick



pull comb through each section of the hair starting at the scalp

✿ Some families use a Robicomb. Ask your chemist about this.

He tapu te mahunga ki ngā Iwi  
puta noa, na reira tiakina.

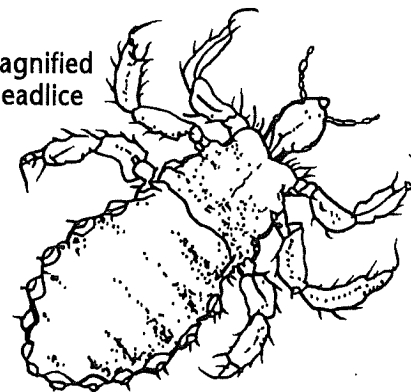
Prevention is better than cure

He arai pai atu i te rongoa

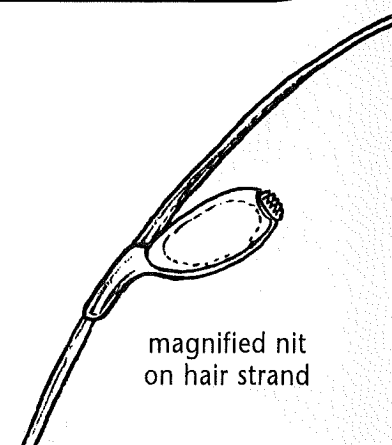
# Headlice

## Kutu/Riha

magnified  
headlice



magnified nit  
on hair strand



Mo te tautoko, a, tohutohu tonu

For more help and advice

✿ Contact your nurse at the Hauora/Community Health Centre or your Public Health Nurse.

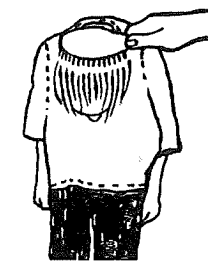
Hair care – two things **EVERYONE**  
in the family needs to do

Tiaki o te makawe – E rua ngā mea  
hei mahi ma te whānau

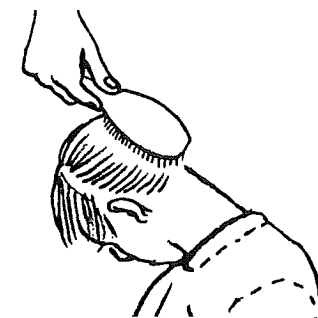


**1 Daily – EVERYONE brushes their hair**

use a brush which will get through the hair



10 times back of neck over head



10 times from behind left ear across head



10 times from behind right ear across head



best time – just before you go to sleep



**2 Once a week – wet comb EVERYONE'S hair**



if you see headlice on the comb start regular wet combing the hair every three days for the next three weeks

Whakaekengia te kutu/riha i te mahunga

Serious headlice invasion



✿ if the headlice are really bad, try using a headlice shampoo  
✿ get this shampoo from the chemist or a prescription for it from a doctor  
✿ follow the instructions  
✿ start wet combing the hair again

