

KAIAPOI PRIMARY SCHOOL
PROPOSED NEW TECHNOLOGY CENTRE

designgroupstapletonelliott.co.nz



designgroup
stapleton elliott



View of new proposed technology centre

These pages show the new technology centre proposed for Kaiapoi Borough School . This technology centre is to be used by students from many surrounding schools in the community, and also year 7 and 8 students attending KBS.

The gable end form has been designed to continue the language of the previously built classroom block, and the materials and colours selected reflect the finishes throughout the school environment.

This treatment continues into the interior of the building where the blues and greens on the floor and walls invoke the Kaiapoi river running to the west of the school site.

This proposed new building contains workshops equipped to support the special curriculum in this part of the school. Each workshop opens into a central space which can be utilised for group work and collaboration between the various types of technology taught in the block.

Proposed External Form



PROPOSED FLOOR PLAN

SCALE: 1:200

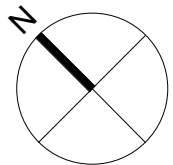
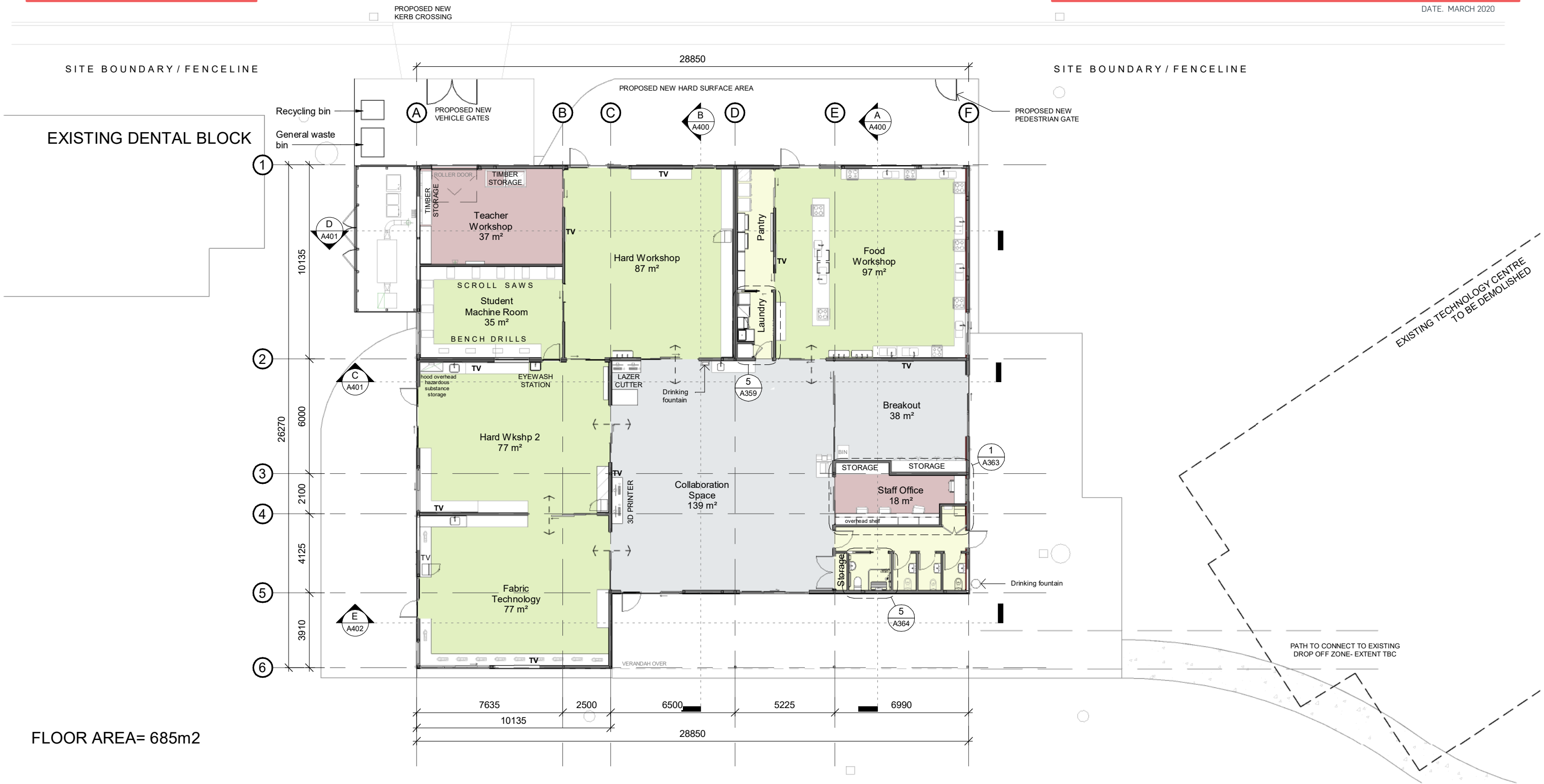
RAVEN QUAY

Ministry of Education
Kaiapoi Borough Tech Centre
Kaiapoi

A200

PROJECT No. M701

DATE: MARCH 2020



designgroup

stapleton elliott

ELEVATIONS 02

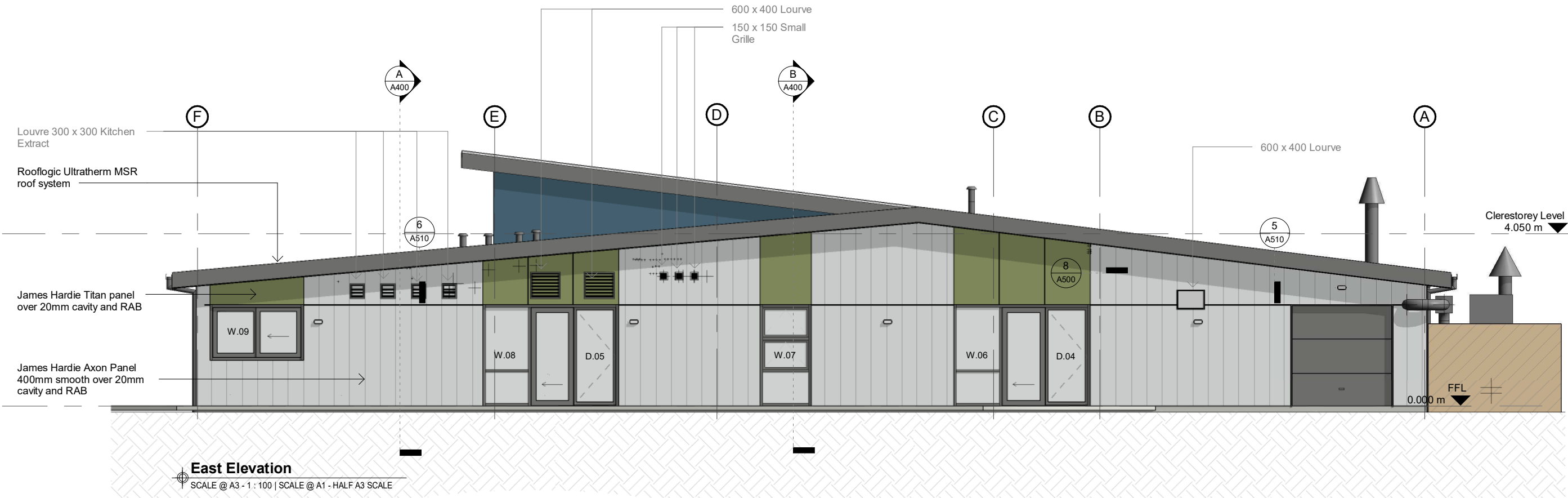
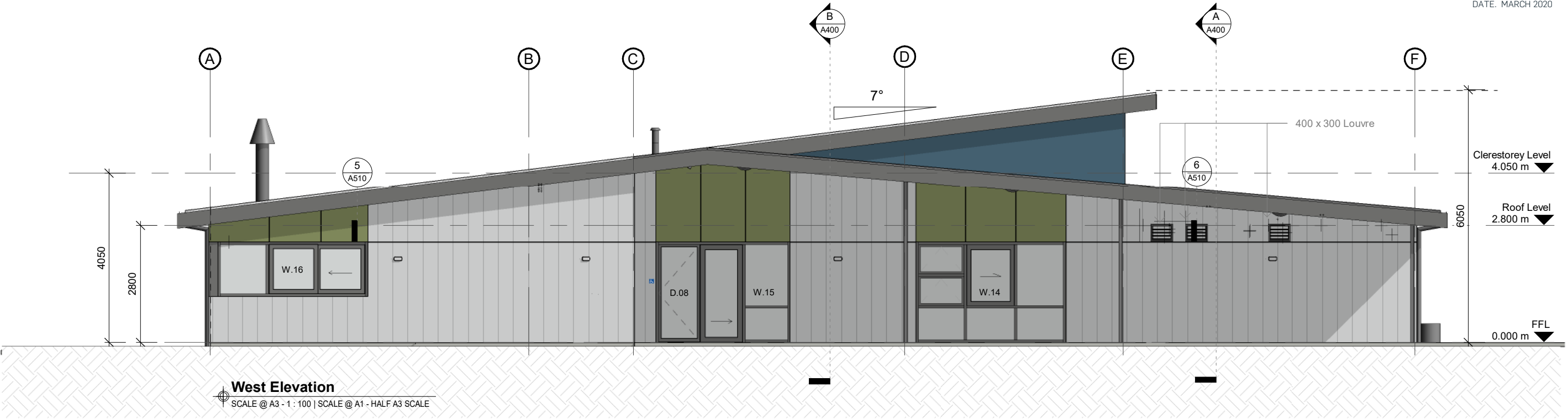
SCALE: 1:100

Ministry of Education
Kaiapoi Borough Tech Centre
Kaiapoi

A310

PROJECT No. M701

DATE: MARCH 2020



PAINT FINISH KEY

Resene Seachange Resene Westwood Resene Quarter Foggy Grey



designgroup

stapleton elliott



Internal Collaboration Space- View to Breakout





Internal Collaboration Space- View from entry doors



Internal Collaboration Space- View to Workshops 3 & 4



Exterior View

