

Kaitoro - Middle Team

Years 2 - 4



PARENT INFORMATION

2018

Middle Team Organisation

Room 5 - Years 2/3 - Rachel Ovens

Room 6 - Years 2/3 - Rae Parker

Room 7 - Year 3/4 - Garth Powell (Middle Syndicate Dean)

Room 8 - Year 3/4 - Sarah O'Neill

Catherine McRae – Release Teacher for Room 7

Belinda Duff - Release Teacher for Rooms 6 and 8

Ilze Livesey, Susan Irvine and Sarah Esplin – Teacher Aides

Transition to Kaitoro - the Middle School

- * Increased independence
 - * Coming into class on own
 - * Unpacking bags and organising equipment required for the school day
- * Taking more responsibility for their learning
- * The older children being role models and buddies for the younger children

Meet the Teacher Evening

Meet the teacher interviews:

Week 5 - Wednesday 28 February



The Curriculum

- **Essential Learning Areas**

- **Mathematics**

- **English**

- **The Arts**

- **Science**

- **Technology**

- **Physical Education**

- **Health**

- **Social Sciences**

- **Māori**

Literacy and Numeracy are integrated into everything we do.

Reading

- School Programmes - Fab4, Daily4
- Home Reading
- School Library
- Reading Log
- Choosing Independently
- Reading Hui – To be confirmed



The New Zealand Maths Curriculum

Geometry and Measurement

- Shape
- Position and Orientation
- Transformation
- Length
- Area
- Volume and Capacity
- Mass
- Angle
- Temperature
- Time

Number

- Number Strategy
 - Addition/Subtraction
 - Multiplication/Division
 - Proportions/Ratios
- Number Knowledge

Statistics

- Investigations
- Graphs
- Probability

Numeracy

- * Groups based around stages for number
- * Mixed ability grouping for strand
- * Kiwiana group
- * Maths information booklet - on the school website
- * Basic facts and problem solving focus
- * Pathways and workshops

Strategy and Knowledge

- **Strategy:** How the children solve a problem

Example: If there were 13 geese in a pond, and 14 more geese flew in. How many geese are there altogether?

Answer: Use doubles: $13 + 13 = 26 + 1 = 27$

- **Knowledge:** The understanding of number that children require when using a strategy

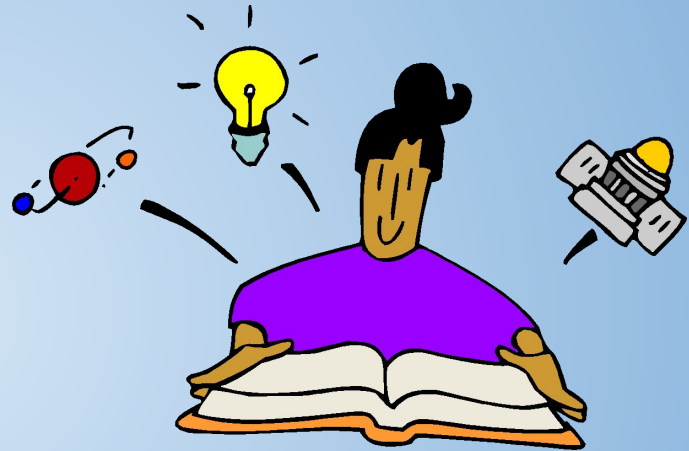
Doubles to 20; basic addition/subtraction facts to 20; counting forwards and backwards to 100 or 1000 etc

Maths at Home

- Practising basic facts
- Practising times tables and division
- Reading and solving word problems
- Discussing the strategies used when solving problems
- Counting forwards and backwards to/from 20, 50, 100, 1000 etc
- Cutting items into fractions e.g. apples in quarters
- Telling the time – both digital and analogue
- Looking at prices when at the supermarket
- Making patterns
- e-ako, XtraMath and Studyladder

Homework

- * Expectations
- * Content
 - * Spelling
 - * Reading
 - * Maths
 - * Recorder
- * Extra homework activities on the school website – Middle Syndicate



Inquiry and Research

At East Taieri School we encourage our learners to be inquisitive. Our Inquiry programme allows for children to develop skills and knowledge within a specific framework. Within this framework, children are able to develop learner agency and follow their passions and interests.

Research Questions:

1. What makes a good research question?
2. How do I find and use information to answer my question?

Research Questions:



QUESTIONING

- I can form a research question about a topic



FIND

- I can use a reference book to locate specific information



INTERPRET

- I can read and locate key words and ideas from the information I have gathered



ANSWER

- I can begin to attempt to put the information into my own words to answer a question

Our Inquiry Model...

TREES

- **TUNING IN** – What information do I already know about the topic? What do I want to find out? Define – Ask a BIG question.
- **RESEARCH** – Locate – Identify resources that will help answer the BIG question. Find and sort out information to help answer the BIG question.
- **EXTEND** – Select and Organise – Organise the information that will answer the BIG question. How will it be presented. Can I take my information further?
- **EVALUATE** – Assess – Has the BIG question been answered? Could I have done it differently?
- **SO WHAT?** – Present – Decide the best way to present the information. How will I use this information in the future?

2018 Inquiry Topics

- **Term 1** - Make and Do
- **Term 2** - Play is the Way
- **Term 3** - TechSmart Kids
- **Term 4** - The World is your Oyster (Passion Projects)

Watch weekly notes and the school newsletter for events relating to these things.

Our School Vision



***At East Taieri
School we
Empower, Inspire
and Care as we
Learn and Grow
Together***

Values Programme



Our new values:

- Kindness
- Respect
- Responsibility
- Resilience
- Personal Best

Key Competencies

- * At East Taieri School our programmes reflect the Key Competencies and our Values programme
- * We have a focus value for a 2 week period of time.
- * Children are recognised for consistently demonstrating these values and competencies at assemblies.

Key Competencies

- Managing Self
- Relating to others
- Participating and Contributing
- Thinking
- Using Language, Symbols and Texts

Discovery Time

Discovery Time provides opportunities to help scaffold and extend students' learning through a variety of different learning experiences, ranging from science and technology, to building and the arts.

The children develop skills in:

- * Cooperative learning
- * Leadership across a range of ages
- * Questioning and social conversations
- * Relating to others

Discovery Time

Discovery Time begins in Term 2 and runs through to the end of Term 3

This is for Year 3 to 6 children. The Year 2 children have a very similar programme, but it is run in their classes.

We encourage parents and grandparents to either help lead or support their children with activities / workshops

For more information please contact: Sarah O'Neill

sarah@east-taieri.school.nz

School Programmes

- Specialist Teachers – Alison Tay (music), Jolene Casey (P.E)
- Swimming- Jill Clarke
- Library - Each class attends the library for 1 session a week. Check with your class teacher when this is
- Whanau Hui - Tuesday afternoon
- Kaitoro Sport - Monday afternoon
- Singing - every non assembly Friday afternoon

School Support Programmes and Agencies

- Reading recovery
- Teacher Aide Support within the classroom
- Kiwiana - Gifted and Talented programme
- Resource Teacher of Learning and Behaviour (RTLb)
- Group Special Education (GSE)
- Speech Language Therapy (SLT)
- Public Health Nurse
- Vision and Hearing
- Various outside agencies (e.g. Police Educator, Life Education...)

Collaborative Teaching

As a reflective staff who aspire to continually improve and enhance our teaching practice we are all involved in collaborative teaching. This enables students to benefit from the strengths of more than just their home room teacher and interact with a wider range of students.

Monitoring Progress

- * Standardised Testing**

- * Assessment**

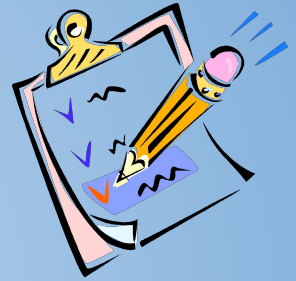
- Beginning of year assessment

- * Reporting to Parents**

- Mid Year Report & Interviews
 - End of Year Reports

- * Australasian Assessments**

- See Natalie King about these



Highlights



Swimming
Discovery Time
Tirohanga Day
Trips



Year 4 museum sleepover

Speakers

Kaitoro Stars

Gymnastics

Many Others!!



Expectations

→ Sun hats

- ◆ Must be wide brimmed and worn whenever outside during Terms 1 and 4

→ Clothing and Belongings Named

- ◆ Please name all clothing very clearly
- ◆ Lost items are placed in the lost property bin in the office foyer

→ Toys

- ◆ We encourage the children not to bring toys to school, but if they do they are the responsibility of the child

Expectations

→ Snack Attack

- ◆ We have a healthy quick snack at 10am
- ◆ Suggested food: fruit, vegetables or nuts

→ Notes for Phys Ed

- ◆ If your child is unable to participate in physical activities, you must send a note to school

→ Notify Absences and if a bus person

- ◆ It is important that you contact the office if your child is going to be late for school or away for the day. If your child is a bus pupil, you must let Annette know if they are on it or not

Expectations

→ Road Safety

- ◆ If your child is on the bus, walking, scootering or biking to school, they are required to wear a high viz vest. You can get these at the office for a \$5.00 bond. You can also wear your own one from home if you have one. Please use the crossings at the designated sites. These are clearly marked by cones.

→ Appointments

- ◆ If you have any issues regarding your child, please make an appointment with the class teacher in the first instance. If you require further support, contact the Middle Dean. If necessary, the Principal will then become involved.

Drop off Zones

Due to the large volume of traffic we encourage students to walk or wheel to school or utilise our drop off zones from which children can safely walk to school. See the map to locate your nearest drop off zone.



Contact

If you have any further questions or concerns, please contact your child's teacher.

Garth Powell - garth@east-taieri.school.nz

Sarah O'Neill - sarah@east-taieri.school.nz

Rachel Ovens - rachel@east-taieri.school.nz

Rae Parker - rae@east-taieri.school.nz

Jennifer Horgan (Principal) - jennifer@east-taieri.school.nz