

switch on safety

FOR WINDOWS 7/8

Here's how you Switch on Safety to help keep your child safe when learning from home on a **WINDOWS 7/8** device. These instructions will help you change the 'DNS' settings on your child's device to add an extra safety filter for anyone using it for online learning.

1 FIND

Find where you can change **DNS settings**.

2 SWITCH

Change the settings to **Switch on Safety**.

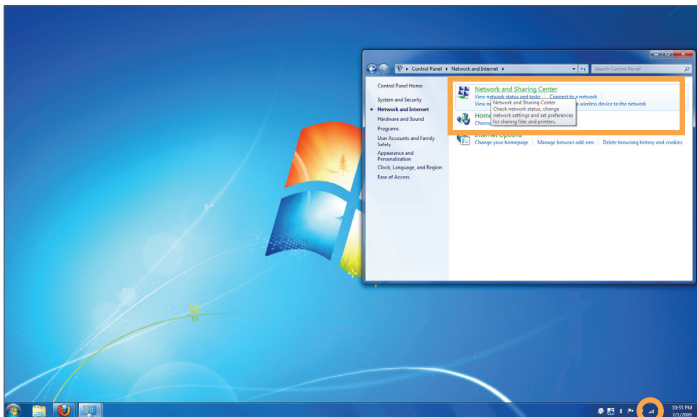
3 TEST

Test the device to make sure it worked.

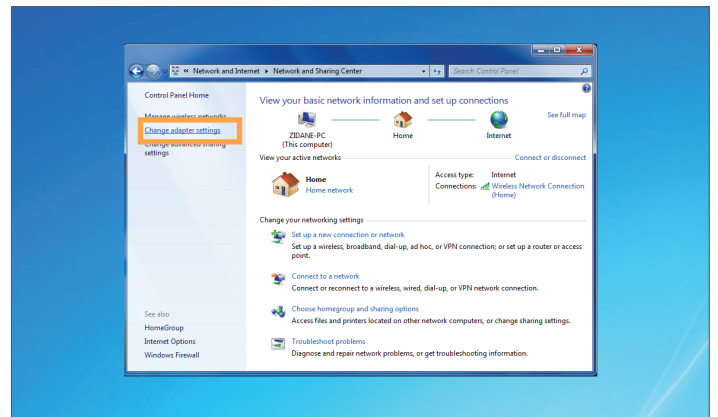
1 FIND

// First you need to find your 'DNS' settings. **Here's how.**

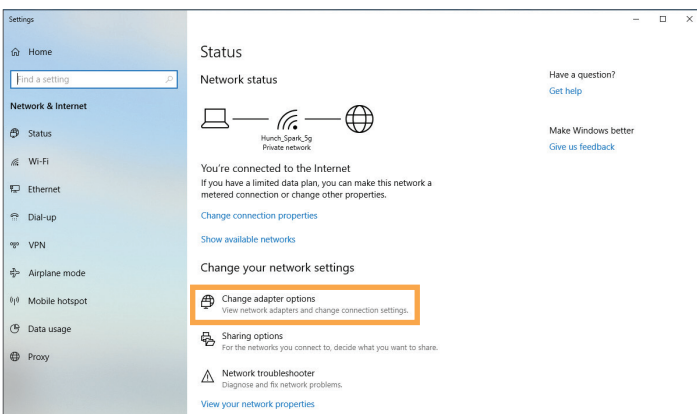
1. Right click on the 'Wireless' or 'Ethernet' icon and click on 'Network & Sharing Centre'.



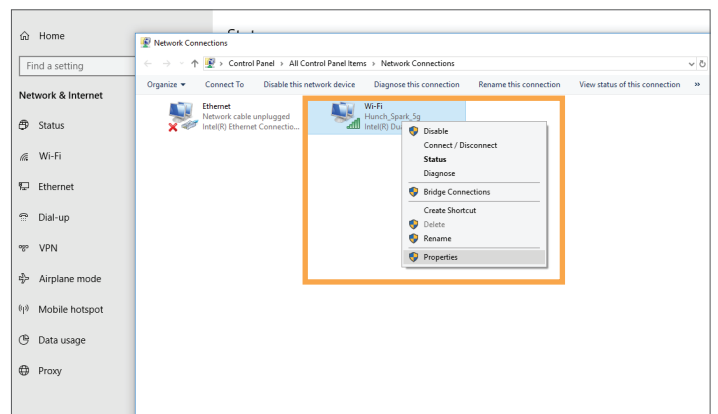
2. Click on 'Change adaptor settings' on the left hand panel.



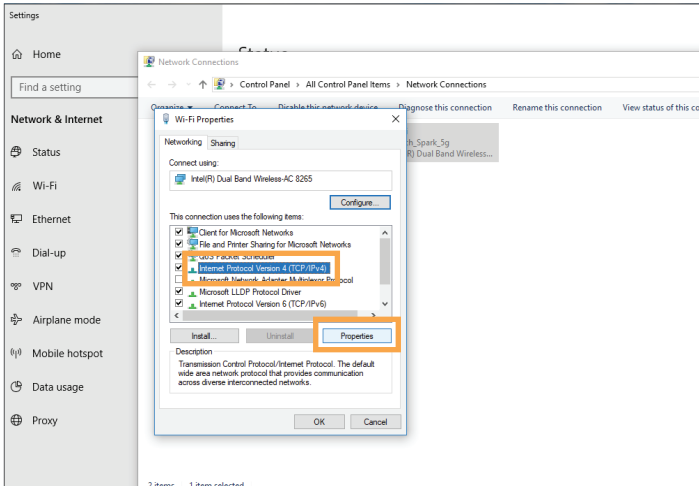
3. Click on 'Change adaptor options'.



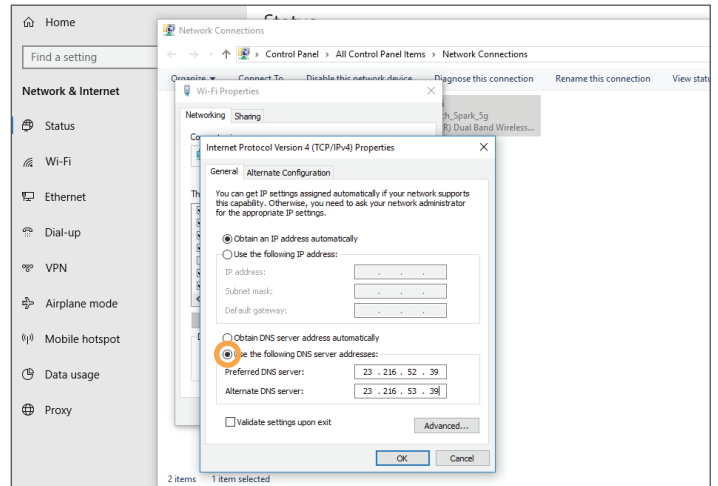
4. Right-click on your active Wi-Fi or Ethernet Connection and select 'Properties'.



5. Click on 'Internet Protocol Version 4' and select 'Properties'.

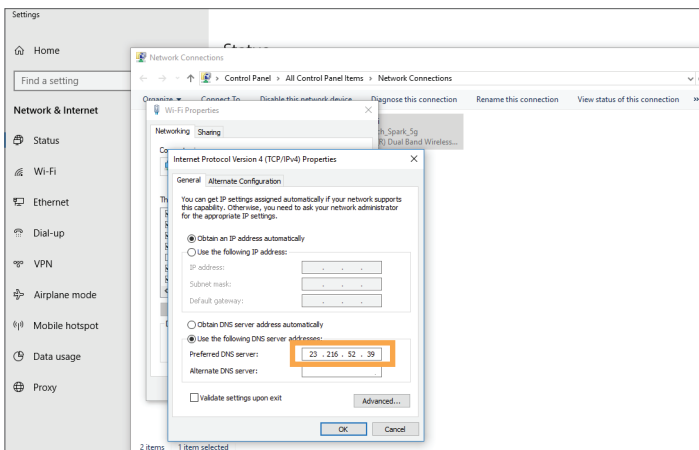


6. Select 'Use the following DNS server addresses'. If you already have a DNS server address, take a picture or write it down for your records.

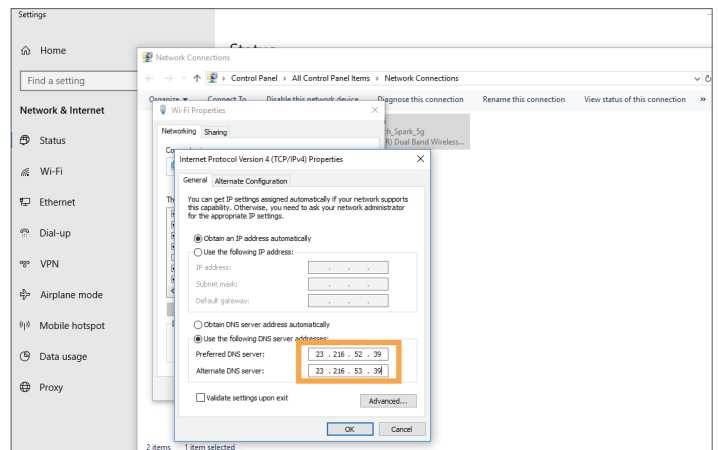


2 SWITCH // Next you need to add manual 'DNS' settings. Here's how.

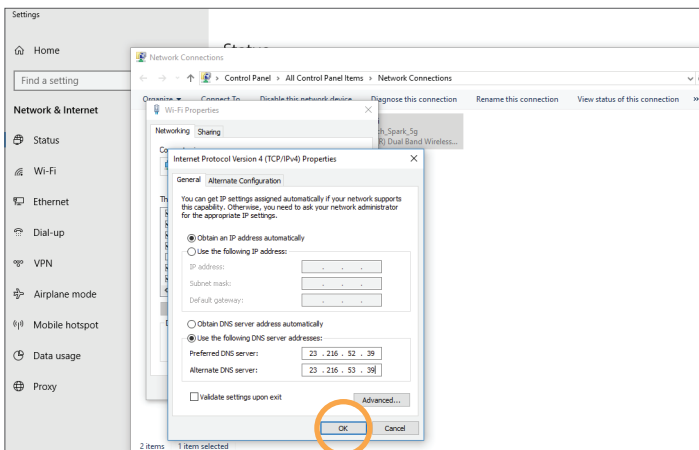
1. For Preferred enter the number 23.216.52.39



2. For Alternate enter the number 23.216.53.39



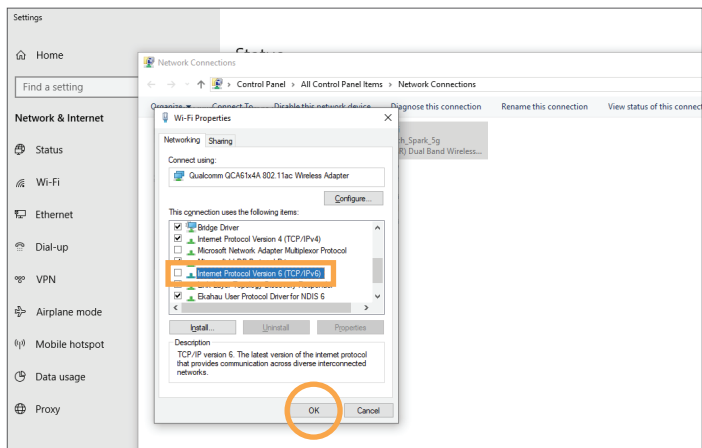
3. Click 'OK'.



HAVING TROUBLE? Make sure you've entered the right DNS server numbers. If you're still experiencing issues, repeat instructions up to FIND Step 6 and select 'Obtain DNS server address automatically' so the internet keeps working. Then go to switchonsafety.co.nz/help or fill out the **Contact form**.



- Untick the box labelled 'Internet Protocol Version 6 (TCP/IPv6)'.
Then click 'OK'. If you don't have the 'OK' button, please click 'Close'.

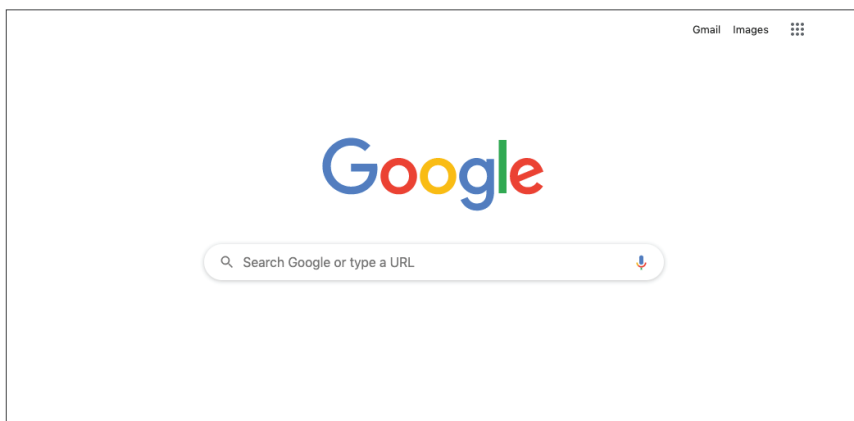


3 TEST

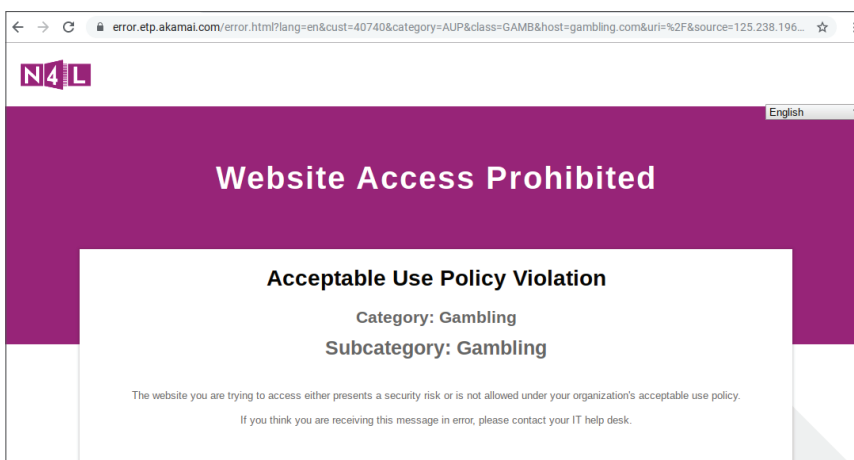
// Finally, you need to check that it worked. **Here's how.**

IMPORTANT: RESTART YOUR DEVICE BEFORE THE 'TEST' INSTRUCTIONS.

- Type in www.google.com to check that the internet is working.



- Try accessing www.freelotto.com to test you've Switched on Safety. You will see something like the screen to the right if it's working. If you get through to the webpage successfully, please check that all setup steps have been followed and test again, or visit www.switchonsafety.co.nz/help



HAVING TROUBLE? Make sure you've entered the right DNS server numbers. If you're still experiencing issues, repeat instructions up to FIND Step 6 and select 'Obtain DNS server address automatically' so the internet keeps working. Then go to switchonsafety.co.nz/help or fill out the **Contact form**.