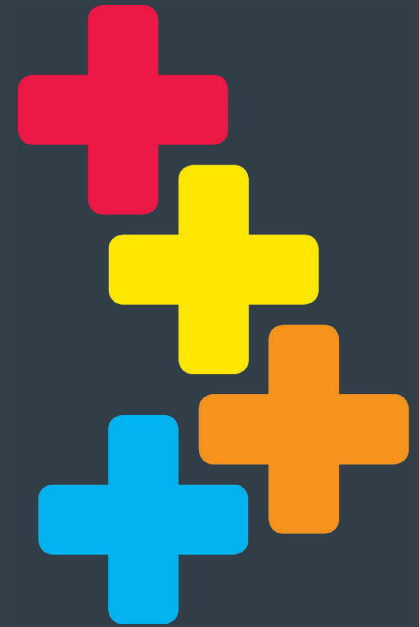


For Teachers
MindPlus
Y2-8 Students
Information Pack

Empowering Extraordinary Minds



New Zealand Centre
for Gifted Education
Empowering Extraordinary Minds

hello@nzcge.co.nz
0800 769 243

MindPlus programmes for students in Y2-8

The New Zealand Centre for Gifted Education is a non-profit organisation that operates the MindPlus family of programmes across New Zealand, both face to face and online.

We work collaboratively with schools to help you provide opportunities for your own gifted learners, at your school and/or at our units.

What is MindPlus?

MindPlus is a one session a week programme with a specialist teacher that runs during school time, or sometimes at home.

Students in Y2-8 have three options for accessing the programme:

- **MindPlus OurSchool:** *Where like-minds come together* - The original in-person day-long experience at one of our 14 units around New Zealand
- **MindPlus YourSchool:** *Enrichment brought to your place* - Working with other gifted learners at your own school/kura, with the support of our specialist teacher
- **MindPlus Online:** *A space where you can connect from anywhere* - Working from home or your school, interacting with other learners and our teacher online.

For gifted learners who need a few hours per week of strengths-based extension (as part of the above, or on its own) we also offer **MindPlus Badges**.

Our specialist teachers understand neurodiverse learners and what makes them tick - and small class numbers, online and face to face, enable personalised learning that focuses on each child's strengths and

interests. Students gain the most benefit when they participate for two or more years, building lasting relationships with the teacher and like-minded peers.

What's the thinking behind the one session a week model?

We designed MindPlus to meet specific learning, social and emotional needs of intellectually and creatively gifted learners. It is not intended to meet all of their needs. There are a range of needs that are best met at your school, at the students homes and within the community.

One session per week at MindPlus is sufficient to provide cognitive challenge, increased creative productivity, interpersonal development, and sustained talent development, all of which can be taken back into your regular school interactions.

This information pack covers:

- Our MindPlus programmes
- What we teach - our NZCGE curriculum
- How to apply to join a MindPlus programme
- Fees and scholarships available.

To learn more, check out our **Introduction to MindPlus** **taster course for teachers** [here](#).

What would one session a week at MindPlus be like for a student?

Every session at MindPlus is unique, because every group of students is unique. A session might include:

- Coming up with a new invention or design
- In-depth philosophical discussions where students get to share their thinking and ideas
- Understanding what giftedness means, for each student, and supporting them to develop their own strengths
- Working out how to explain giftedness, and the joys and challenges that it brings to friends, teachers and whānau
- Creative thinking games, where students can let their imagination go wild!
- Individualised activities that students design with their specialist teacher in areas of personal interests and talents, like fantasy writing, game design, coding, chess, 3D construction, art, design, learning another language ...





MindPlus OurSchool

Your students come together with Y2 - 8 gifted learners from other schools for one day per week during school hours at one of our 13 physical locations around NZ.

Does my school have to give permission for students to attend MindPlus?

Yes, they are considered legally to still be at school, so permission is required for them to leave school or their class and attend the programme.

It's also optimal for your school to be fully on board. We work with you to share how your student is doing with us, and we can support you to extend and support your student more effectively at school.

Many of our Contributing Schools send a number of students to us at MindPlus and contribute to their fees as discussed further below.

Some children have learning challenges as well as learning gifts. How do you manage that in the classroom?

Giftedness can co-exist with a range of other challenges. Our specialist educators are able to recognise and understand many of these challenges and shape the learning programme so that these are 'worked around' in the MindPlus day. Examples of this might include - giving a range of options to respond to learning activities rather than just writing; facilitating movement as needed; having designated spaces for individual work as needed and use of assistive technologies as needed. We are a strengths-based programme, so we work with students to make the best use of their strengths.

It's also really important that the kids complement each other and are able to learn well as a group. To work out the best fit for each student, our entry process gathers information from home and school and students may participate in an Entry Workshop so we can learn more about them.

We watch how the students interact, and find out more about their intellectual, creative, social and cultural ways of working.

We are working to achieve a balance of gender, ethnicity and types of neurodiversity across all our classes. It is worth noting that, historically, schools (and sometimes parents) have been less quick to spot giftedness in girls and children from non-majority cultures.

Where are MindPlus OurSchool units located?

MindPlus OurSchool currently operates out of 13 units (classrooms) across New Zealand:

- Auckland - North (Verran Primary School, Birkdale), West (Bruce McLaren Intermediate, Henderson), Central (Edendale Primary School, Sandringham), East (Riverina Primary School, Pakuranga)
- Tauranga (Gate Pa School)
- Rotorua (Kaitao Intermediate School)
- Manawatu (Queen Elizabeth College)
- Lower Hutt (Rata Street School)
- Wellington - West (Cardinal McKeefry School, Wilton), South (Evans Bay Intermediate, Kilbirnie)
- Lincoln (West Melton Community Centre)
- Christchurch (Riccarton High School)
- Mid-Canterbury (Ashburton Christian School)

New units are able to be opened where there is a sufficient core of students and Contributing Schools - talk to us about how to build this in your area!

If students do not live near one of these units, and your school is not able to offer MindPlus YourSchool (see below), then you may wish to consider MindPlus Online.



MindPlusYourSchool

This new option for accessing MindPlus makes it available onsite at your own school. A number of gifted students can come together for a fixed time each week, facilitated by a 'Partner Teacher' working alongside our specialist MindPlus teacher online.

Who is MindPlus YourSchool for?

MindPlus YourSchool is designed for gifted kids and schools in the following situations:

- Students don't have a MindPlus OurSchool unit accessible to them
- Students feel comfortable at your school and would prefer to get the support they need with you
- Students want to learn alongside their peers rather than wholly online
- You want to provide effectively for gifted kids at your own school but do not have teaching staff with this specialisation.

How does MindPlus YourSchool work?

During each session, the students and the Partner Teacher that you designate meet online with their MindPlus Teacher and then work through the same MindPlus curricular activities as students in a MindPlus OurSchool unit, with guidance, feedback and support from their onsite Partner Teacher and online MindPlus Teacher. The extra benefit for the students is that the Partner Teacher becomes a champion for them and can help other teachers at your school to more effectively meet their needs.

Can my school be a part of MindPlus YourSchool?

MindPlus YourSchool is a new addition to the MindPlus family and is piloting in 2022. If you would like your school to be a MindPlus Partner School, we would love to hear from you! See our **MindPlus YourSchool** overview [here](#) for more information, email us at hello@nzcge.co.nz or phone 0800 769 243



MindPlus Online

This option allows students to work independently from home or school, interacting with other learners and our specialist MindPlus teacher online.

How does MindPlus Online work?

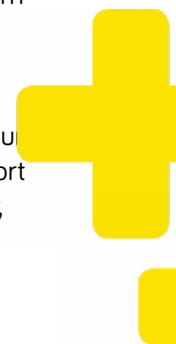
MindPlus Online connects gifted children with like-minded peers, providing them with an online learning and social support network. Work is introduced and supervised by a specialist teacher who knows how to get the best from an online learning environment and understands what makes gifted learners tick. MindPlus Online students can negotiate their own learning pathway, catering for individual strengths and interests, ensuring that they are appropriately stretched.

A MindPlus Online session include:

- A 45-minute video call with a small class of like-minded peers and a specialist educator (this can be before or after school or during the school day)
- 2 hours (minimum) of MindPlus activities to complete using Google Classroom
- Freedom to share and interact with virtual classmates on Google Classroom.

What kind of students does MindPlus Online suit?

MindPlus Online works for gifted kids across many different situations. Some of our Online students do MindPlus Online in an integrated way at school with the support of the school. Others do MindPlus Online at home as an extra enrichment activity, without the involvement of their regular school. Some of our MindPlus kids live outside NZ and really value the specialist support NZCGE provides that they can't find where they are.



MindPlus Badges

Badges allow students to explore their own talent area for a few hours a week, supported by a MindPlus teacher and other gifted learners, carried out as part of one of our other MindPlus programmes or on their own.

What are MindPlus Badges?

MindPlus Badges offer extension challenges in specific strength areas. Students work independently in Google Classroom, with a specialist teacher as needed across the term.

We currently offer six MindPlus Badges:

- **History Badge:** For those passionate about the past, ancient civilisations, development of technology over time, or myths and legends
- **Science Badge:** For those passionate about finding out why and how things happen or work, making chemical reactions, and who enjoy being a 'myth buster'
- **Maths Badge:** For those passionate about all things mathematical, covering logical and creative thinking, puzzle and problem solving - from maths, the real world and our imaginations
- **Design Badge:** For those passionate about designing, building, making and creating, involving activities around design theory, graphics, coding, animation, gaming, modelling, presentation, colour theory, invention and innovation
- **Writing Badge:** For those passionate about writing and story-telling, in any form
- **Creative Thinking Badge:** For those passionate about thinking outside of the box and who enjoy curly challenges and complex solutions.

NOTE:

Badges can be achieved at three levels: bronze (achieved), silver (merit) and gold (excellence).

Who can do MindPlus Badges?

MindPlus Badges are for students in Year 4 and over. Students require relatively strong reading, comprehension and technological skills, and need to be able to access Google Classroom and video call with some independence. Younger children may be able to negotiate a place in the MindPlus Badge programme.

Students do not need to be enrolled in any of the other MindPlus programmes to undertake a badge.

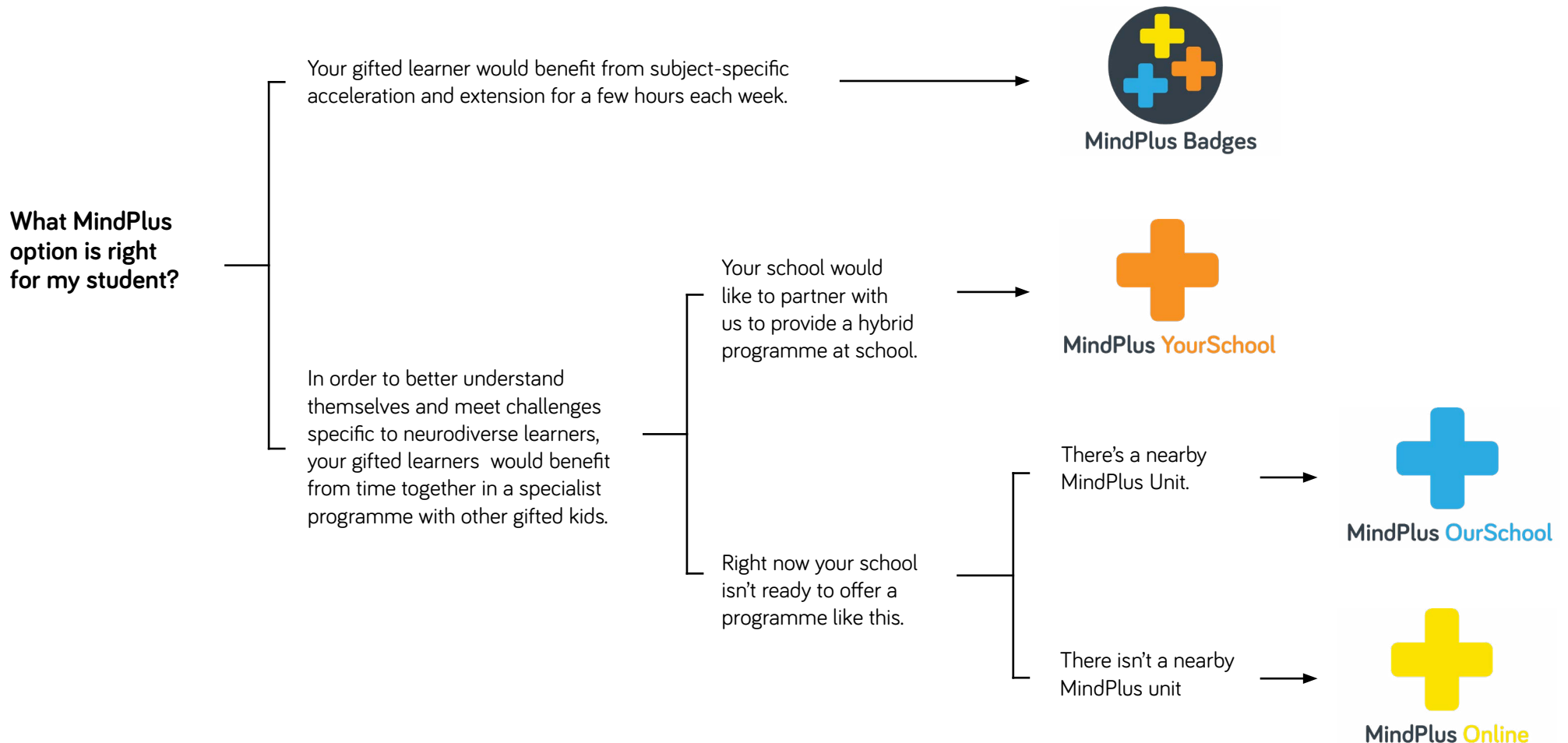
Undertaking each badge requires a minimum of 30 minutes per week, up to a maximum of two hours each week. MindPlus Badges are entirely self-paced and there is no time limit for completing each badge. On average, completion of a MindPlus Badge takes one school term.

How can schools use MindPlus Badges?

Schools can use MindPlus Badges to extend their gifted kids within class time or potentially as part of a lunchtime or after-school club session.



Which MindPlus option is right for my Y2-8 student?



What we teach at MindPlus

The learning experiences we provide at MindPlus are built on our own New Zealand Centre for Gifted Education Curriculum. This is a purpose-built specialist curriculum for gifted learners, developed with national and international experts and research. It underpins all MindPlus programmes and complements the New Zealand

Students interact with learners of like-minds to:



Develop an understanding of self and others as gifted individuals.



Explore and develop strengths, talents, interests and passions.



Develop and engage in abstract learning.



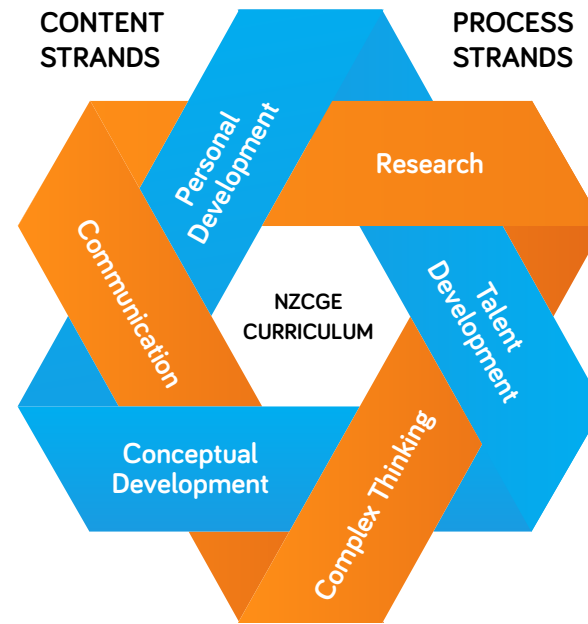
Build self-direction and autonomy in learning.



Develop and use sophisticated learning processes.

Like Minds

The NZCGE Curriculum is built on the premise that effective learning for gifted students involves bringing students of like minds together. This is strongly identified as critical in the research literature.



The NZCGE Curriculum involves advanced content and learning processes. These strands are connected and provide abstraction, depth and complexity in learning that builds over time.

Content Strands

- **Personal Development**
Personal development is about understanding one's own gifted identity - the joys and challenges of being gifted along with the skills and strategies to navigate personal and social development.

- **Conceptual Development**
Conceptual development is about thinking and learning through ideas and concepts. It introduces advanced and abstract content and equips students with skills in dealing with big ideas and questions.
- **Talent Development**
Talent development is specifically designed to identify and build students' strengths, passions and interests, moving them deliberately towards expertise.

Process strands

Our curriculum also supports students to develop the 'how to' skills needed for in-depth and complex learning. These skills are taught explicitly and also woven through the content strands. The main process skills developed through the curriculum are **Research**, **Complex Thinking** and **Communication Skills**.

How to apply

*Note that this section covers only **MindPlus OurSchool**, **MindPlus Online** and **MindPlus Badges**. The application process for **MindPlus YourSchool** will be managed by Partner Schools directly.*

How do I submit an application?

Our application process is designed to gather a wide range of information about each child from home and school - their intellectual, creative, social, personal and cultural abilities and qualities. We are looking for a fit between the child's abilities and potential and what we offer in MindPlus programmes.

The MindPlus Application consists of

- 1. Parent and Whānau Referral Form** (including any additional (but not necessary) information such as a psychologist's report)
- 2. Teacher and School Form** (not required for homeschooled students)
- 3. Principal Approval Form** (not required for homeschooled students)

You will need to fill out the Principal and Teacher Forms and provide parents with the Parent and Whānau Form. There is an Application Fee of \$30.

If you would like to receive an Application pack, email us at hello@nzcge.co.nz

How will I find out if my student has been accepted?

After the application process has been completed, we will determine whether we think that MindPlus would be a good fit for your student. If we are unsure, as does happen in some cases, we may ask parents to bring their child to a three hour Entry Workshop. At the workshop, the student will work on a range of stimulating and challenging activities together with others.

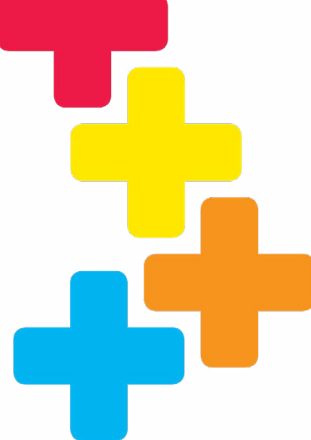
At this point, we will see when an opening can be found in the programme applied for. Please recognise that a space may not be available immediately given that many of our programmes are at full capacity and, depending on demand levels, we may need to open another place or group.

If we have a place available, we will make a Place Offer by email to the family. This will usually be within 2 weeks of the application closing date for the term, or of when the application was submitted for programmes other than OurSchool. If a place is not immediately available, we will ask the family if they would like to go onto our Waiting List. The Place Offer email will give the family details on how to apply for a scholarship if they need one.

How will you liaise with my child's school?

Once the family has accepted the Place Offer, we will write to your principal to confirm that your student will be participating in the programme and outlining how we can work together to support them, including by you being able to access updates on what your student is doing on Hero, our student management system, and being available to discuss any issues as and when needed. We will also ask the principal to confirm whether the school will be contributing to the cost of fees for the student as a number of schools do.

Fees and scholarships



How much does it cost to participate in MindPlus?

The weekly and annual fees for our MindPlus programmes are set out below.

Programme type	Weekly cost (incl GST)	Annual cost (incl GST)
MindPlus OurSchool	\$75	\$2,850
MindPlus YourSchool	\$35	\$1,330
MindPlus Online	\$35	\$1,330
MindPlus Badges	Cost per badge - \$150	

* For 33 weeks

Fees are billed in advance each term, and families are able to pay in full, weekly, fortnightly or monthly.

We know that these fees are significant for many families and we suggest that families work with you, their iwi if relevant, and other local philanthropic funds to explore ways they can obtain support to attend. If that support is insufficient and the family is otherwise unable to afford for their child to attend MindPlus, we do have a Scholarship Fund which is available to assist a small number of students each year who meet its criteria.

How to apply for a full or part scholarship

If the student meets our criteria, the family can apply for a full or part scholarship from our Scholarship Fund. With a full scholarship, families pay \$10 a week (or \$380 each year) and with a part scholarship, \$35 a week (or \$1,330 each year).

Our main Scholarship Fund has a strategic focus on increasing the number of kids who are right now significantly under-represented in our programmes: girls, Māori and Pasifika students, and students from low decile schools.

Criteria

To be eligible for our main Scholarship Fund, the student must meet at least one of the following criteria:

- The student is female
- The student identifies as Māori and/ or Pasifika
- The student attends a Decile 1-4 school

The family **also** needs to show us that:

- Without the full or part scholarship, they could not afford for their child to participate in MindPlus. They'll need to provide a statement that outlines the family's financial position
- They have made a significant effort to find other sources of financial assistance for their child, including by working with your school.

Note that we do have a limited discretionary fund available for students and families who do not otherwise meet these criteria but where there are extraordinary circumstances.

Once we have received a Scholarship Application Form, we will assess whether:

- Your student meets our criteria and
- We have a scholarship currently available that fits your student's needs

We will let the family know the outcome as soon as possible, and will let you know once they have accepted the Place and Scholarship Offer.

Please note that we are currently working to build the number of scholarships available in our Scholarship Fund. We may not be able to provide a scholarship immediately but can put students on a waiting list for a scholarship in their region.

Do you still have a financial subsidies scheme?

We currently operate a financial subsidies scheme which will finish at the end of 2021. Existing students supported under the financial subsidies scheme will continue to be supported on this basis for as long as they want to stay at MindPlus. Existing families are also able to apply for a full or part scholarship under the new model and to give up their existing subsidy if they are awarded a scholarship.