

CONSOLES

The consoles are developed by Furuno and Olorin together with the yard and an experienced skipper. They are produced at a local factory in Denmark.

The consoles are produced in a standard size but may even be customer designed if other measures are preferred. The consoles are ready for mounting directly at the floor.

The consoles are designed for Olorin 55" monitors but may even be adapted for other versions. The construction is robust and maintenance free. There is a built-in fan/cooling system.

The consoles may be adjusted in height and tilt angle, individually or all together through the Smart Bridge or by an external control panel. They may even be delivered with manual adjustment.





CONSOLE CONTROL

The crew may spend many hours in the wheelhouse, so it is important with a good working ergonomics.

The consoles can be adjusted in tilt angle and in the height. This can be done individually or all together.

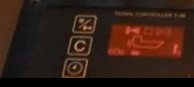
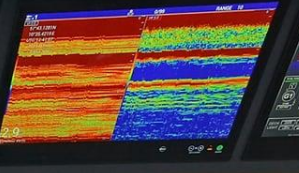
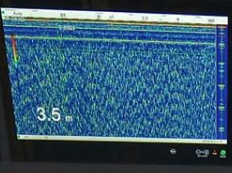
Individual adjustment

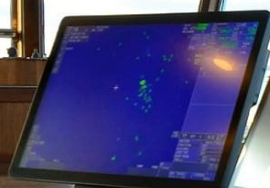


Synchronized adjustment



Control unit (if no Smart Bridge)





A system configuration or control panel display with various settings and buttons. The interface is white with blue accents and includes several input fields, checkboxes, and buttons. The text is in a sans-serif font.

A large navigation display showing a detailed map with a blue route, radar returns, and system status. The map is oriented horizontally and shows a coastline or boundary. The blue route is highlighted in the center. The display includes a scale and other technical indicators. The text is in a sans-serif font.

13:40
Position
N 57°43,480'
O 10°35,300'
Dir.
Arst.
DIS/DISK_A
Gain
sgn
Range
Advanced radar control
Target Analyzer
Echo stretch
Echo average
Int. reject.
Beamstret.
Noise rejection

24 nm



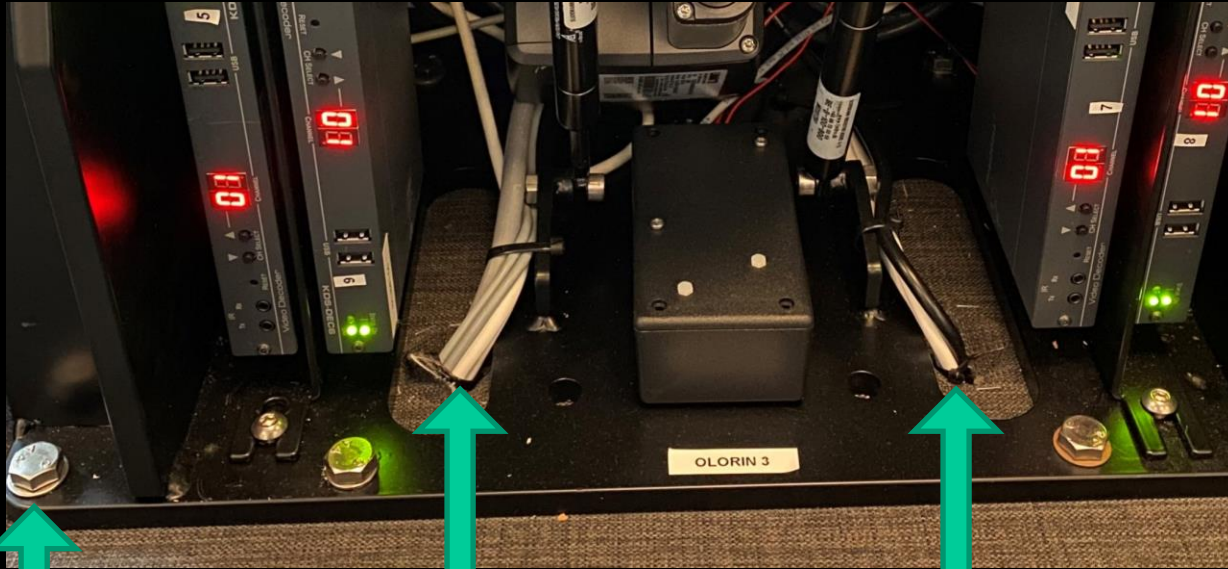












↑
Mounting to floor

↑ Cable entrances to console

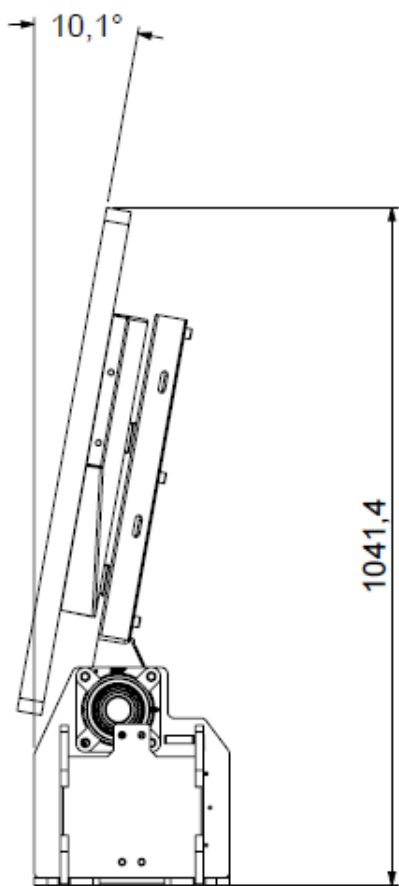


↑ Cable connections onto decoders

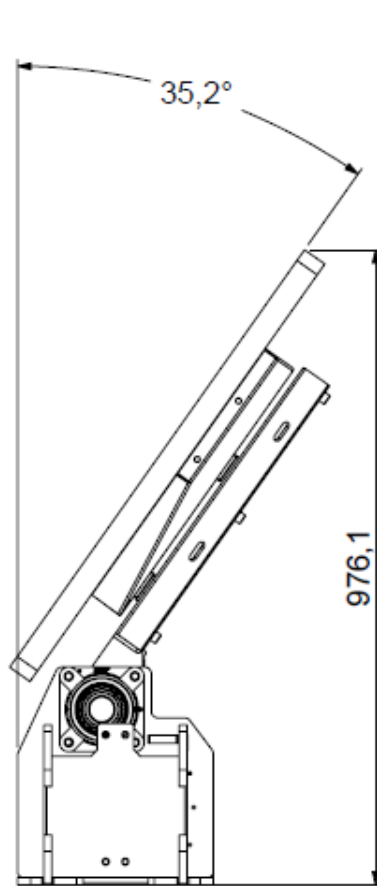
**New version (prototype) for Hatteland 55" approved monitor
(new Hatteland model for 2023)**



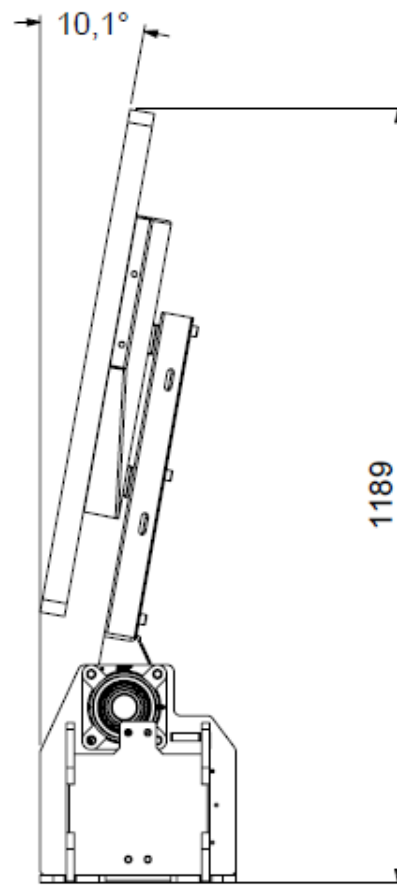




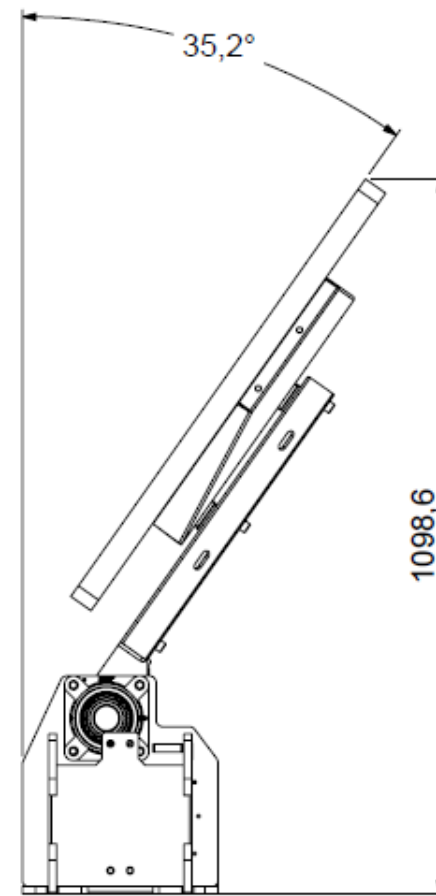
Down position, min tilt



Down position, max tilt



Upp position, min tilt



Upp position, max tilt

PLANNING STATION.

In order to use the monitor and console as a planning station the height of the console should be higher and the maximum tilt should be changed plus the turnable point of the display changed to the center of the display. The basic concept is the same but the appearance will be different.

NOTES:

The unit is delivered in 2 main parts, bottom and top unit.

1. Mount the bottom part as it is.

2. Mount the control box on the prepared holes, but take into account the connectors on the KRAMER units just behind it.

3. When mounting the top part onto the bottom part take care that the bearings must first be secured with the delivered bolts, and then the upper part must be centered via the screws in the bearing, securing it to the shaft.

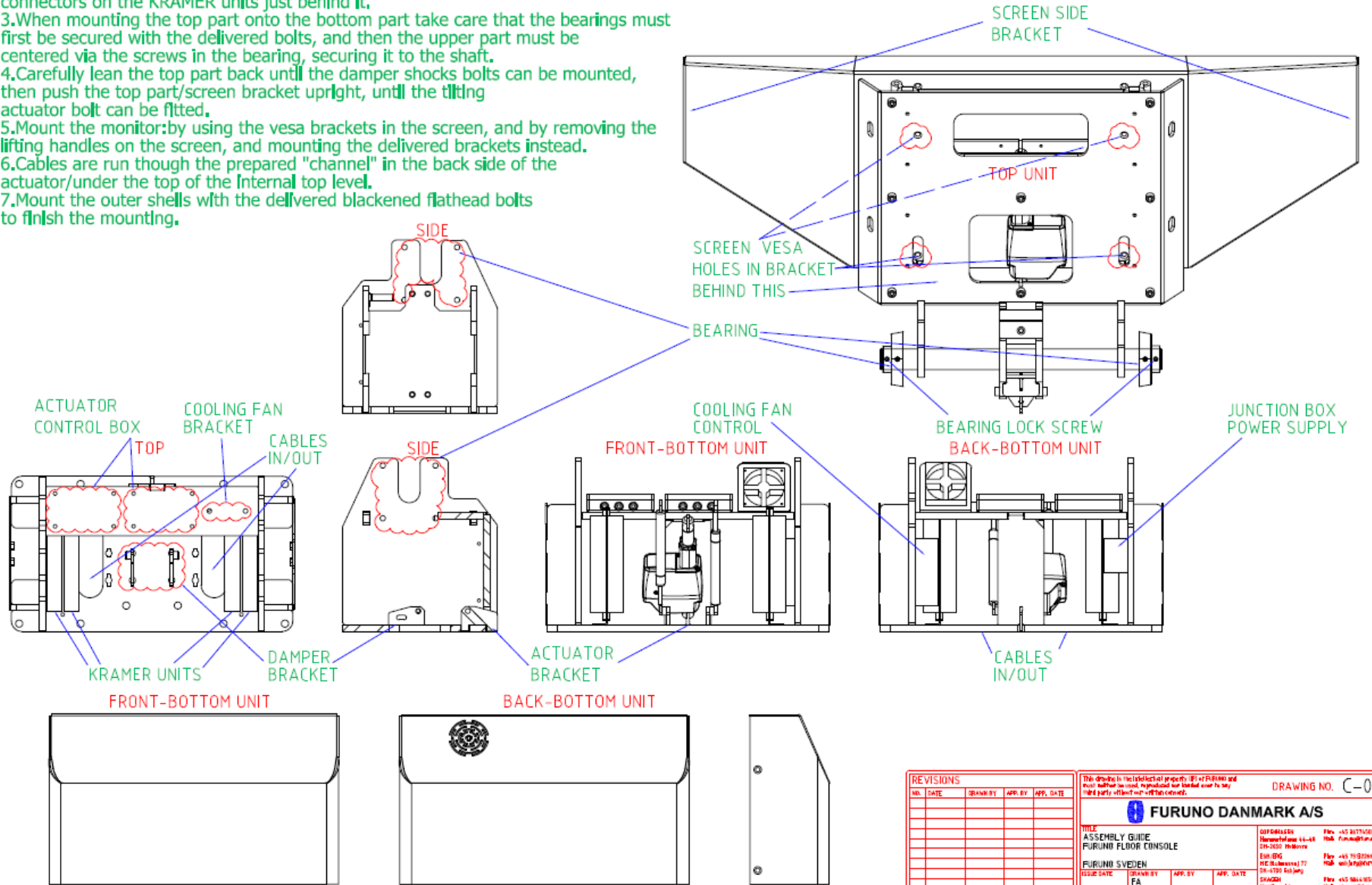
4. Carefully lean the top part back until the damper shocks bolts can be mounted, then push the top part/screen bracket upright, until the tilting actuator bolt can be fitted.

5. Mount the monitor: by using the vesa brackets in the screen, and by removing the lifting handles on the screen, and mounting the delivered brackets instead.

6. Cables are run through the prepared "channel" in the back side of the actuator/under the top of the internal top level.

7. Mount the outer shells with the delivered blackened flathead bolts to finish the mounting.

ASSEMBLY GUIDE FOR FURUNO FLOOR CONSOLE



REVISIONS				
NO.	DATE	DRAWN BY	APP. BY	APP. DATE

This drawing is the intellectual property (IP) of FURUNO and may neither be used, reproduced nor treated in any way without prior written consent.

DRAWING NO. C-001

FURUNO DANMARK A/S

TITLE: ASSEMBLY GUIDE
FURUNO FLOOR CONSOLE

FURUNO SVEDEN

ISSUE DATE	DRAWN BY	APP. BY	APP. DATE

DATE	BY	NO.	REV.

007 DANMARK
Hauptstrasse 44-46
DK-2650 Helsingør
Elev (DK)
REG. (Danmark) 77
DK-4790 Sønderby
SWEDEEN
Vagnvagn 4
SE-1990 Sjögen

Rev. 415 2017/08
Rev. 416 2020/08/20
Rev. 417 2021/04
Rev. 418 2021/04/20
Rev. 419 2021/04/20
Rev. 420 2021/04/20

NLC C-001 ASSEMBLY GUIDE 2021/04/20