

Te Kura Tuatahi O Pakiaka
Woodend School
Information Booklet
2022



Woodend School Staff 2022



TEAMS

Te Hapua Year 1 /2

Jo Bartlett
(Team Leader)
Toni Ryan (NE)
Logan Moore
Alex Prosser
Alissa Hutton
India Graham
Suzie Fraser

Te Awa Year 3/4 Team

Louise Hayes (Team Leader)
Brooke Purves
Sarah Rattray
Terence Langlands

Te Ngahere Year 5/6 Team

Mike Crawford (Team Leader)
Caitlin Loose
Matt Manz

Te Maunga Year 7/8 Team

Lucy French (Team Leader)
Hannah Lumsden
Kirsty Parker
Allie Coyle

Release Teachers

Janice Adams
Jenny Collinson
Adelle Thompson
Emma Neylon
Sylvia Raikes

Learning Support Co-ordinator:

Annie Easter



ADMINISTRATION

Principal: Andrew Retallick

Deputy Principal: Brenda Fordyce

Assistant Principal:
Lucy French & Jo Bartlett

Office Manager / P.A.

Chris Bucknell

Office Assistant/ Bursar:

Pene Price

Office Assistant

Kay Mitchell



SUPPORT STAFF

Learning Assistants

Pip Haigh
Kay Mitchell
Cindy Meyers
Ana Dos Santos Martins
Rachael Paterson

Property Manager

Rod Little

Cleaners

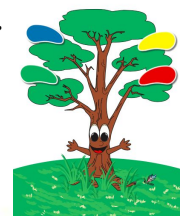
Alison Scarlett
Jack and Ling



office@woodend.school.nz



Woodend School Information Booklet 2022



OUR SCHOOL DAY

BELL TIMES:

The school times are as follows:

8.30 am Students may enter the schoolgrounds

8.55 Warning bell

9.00 Either literacy or numeracy (varies from team to team)

10.00 - 10.20 Morning tea play

10.20 - 10.30 - Eating time

10.30 Either literacy or numeracy

11.30 - 11.50 Team Woodend Workout - following by eating

11.50 - 12.50 Learning Block

12.50 - 1.25 LUNCH PLAY

1.25 - 1.40 - Eating Time

1.40 - 3.00 Learning Block

3.00 Classes conclude, all students are required to leave the school grounds.

3.20 Students may re enter the school grounds for play. Parents responsible for their own children.

Welcome to Woodend School. This Information Booklet provides additional material in support of our School Policies & Procedures which are available online at <http://schooldocs.co.nz>. User name woodend password wood (0 = zero) Please do not hesitate to contact your child's teacher in the first instance and then either deputy principal, the principal or the office staff if you require any additional information..

03 3127808

ABSENCE

Whenever a child is to be absent the school should be notified via Schoolloop app. Continue to report absences each day.

When a child is to be excused from swimming, physical education or any other activity, an email should also be sent. We monitor lateness and absence and the reasons for them. Should a pattern emerge we will contact you to discuss. Please remember that it is the parents' responsibility to have students attend school.

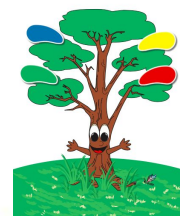
we ♥ school !



Make sure you always leave home in good time to start the school day!!



STUDENTS LEADING THE WAY



PB4L

Students learn best when they feel accepted, when they enjoy positive relationships with their fellow students and teachers, and when they are able to be active, visible members of the learning community. Effective teachers foster positive relationships within environments which are caring, inclusive, non-discriminatory, and cohesive.

We have a student lead Pb4l team who help with active supervision in the playground, whole school reward systems and creating new learning videos. This is a growing role within our school and is constantly improving.

Teaching our Woodend School Intelligent Behaviours and high expectations in all settings is a fundamental part of our Pb4l programme.

Within our school we provide opportunities for our students to take on leadership roles. These opportunities include a very special team of students, our Student Leadership Team. This is made up of eight Year 8 students who take on the roles of Head Students, Cultural Captains and Sports Captains. These students role model and inspire our learners to use their Intelligent Behaviours throughout their journey at Woodend School.

STUDENT LEADERS

PALS

The Physical Activity Leaders (PALs) programme is a leadership initiative designed to provide students with the opportunity to develop and apply leadership skills in the sport and physical activity area. Our PALs have been involved in training days and are supported by teachers. This is an excellent opportunity to develop our tuakana teina relationships across our school.

WE ♥ SCHOOL !



Check out our Woodend school Facebook page.



Woodend School Information Booklet

ASSEMBLIES

At present during Covid restrictions we are unable to have parents attend assemblies. We will notify via the newsletter when conditions change to the following:

Assemblies are held every second Friday on odd weeks each term. Te Hapua and Te Awa Team assembly is at 9.15am in Poaka area.

Te Ngahere and Te Maunga assembly is at 10.30am in Te Po. Teams lead these assemblies in rotation and use them as

an opportunity to share items and celebrate success. Details of these are available through the classroom teacher.

Parents are most welcome at assemblies.

School wide assemblies to celebrate learning are held in the Woodend Community Centre at a pre advertised time whenever possible on the last Friday each term.

End of Year assemblies are advertised in the newsletter when the dates have been confirmed.

Details are entered on the Calendar and are listed on the website.



BOARD OF TRUSTEES:

The Triennial Board Elections are due to be held later this year.

The school is governed by the Board of Trustees. The Board is elected by postal ballot every three years by the parents of pupils attending Woodend School. The Board is made up of the five elected trustees, the Principal and an elected member of the staff. The Board of Trustees is responsible for the full governance of the school including student achievement, planning/reporting, personnel, resourcing assets and finances, Health & Safety, Compliance & Charter.



BOT



BOT

The Principal and staff manage the school and put into effect the Charter, Governance policies and Operational Policies.

BOT Members

Mark Paterson (Presiding Chair)
Felicity Johnson (Vice Chairperson)
Ryan Jory
Teela Cleghorn
Mike Sands
John McPhail
Chris Bucknell (Secretary)
Adrienne Simpson (Principal)
Brenda Fordyce (Staff Rep)



“Refer Policies & Procedures website for more information

Woodend School Information Booklet

2022

EOTC CLASS TRIPS

Classes occasionally make educational visits to places of interest, both inside and outside our community. Wherever possible we try to involve parents so that they may share with us some of the enjoyment associated with giving children the opportunity to learn outside the classroom, as well as assisting us with transport and supervision.

We make every endeavour to:

- Ensure that places visited are within the scope of the understanding and relevant to the subject being studied.
- Make certain that supervision is adequate and safety of children is paramount at all times.
- Gain every financial concession we can, so costs per pupil are minimized.

In covid restriction times we may not be able to use parent helpers as normally done in the past. We will advise when restrictions change.

DENTAL TREATMENT

Woodend School is administered by the Canterbury Health Board. This free treatment is offered to all children in our area from age 2 1/2 years until their transfer to secondary school. Any problems or concerns you may have about your child's teeth should be directed to the therapist on **0800 8469 83384**. From time to time screening occurs in the Dental van onsite with most treatment then organized at the Dental Centre at Kaiapoi Borough School. Parents are responsible for transport to and from this Centre.

BOOK CLUB

Scholastic Book Club provide an interesting range of books at relatively cheap prices. These are graded into four levels according to the difficulty of the material. Purchases attract bonus points which are used to buy new library books.

There is no compulsion to purchase any books at all but forms are given out to each child with the final date for return of orders and money. There are four selections per year.

* Refer Policies and Procedures Website for more information.



NEWSFLASH!



The Scoop

EARLY OR EMERGENCY CLOSING OF SCHOOL

This seldom happens but we may close for a variety of reasons – bad weather, conditions which would make the school uninhabitable and or difficult to staff..

Where such conditions are likely to result in a general closure of schools in the area your local radio station would probably be the best source of information.

Messages will also be circulated via Schoolloop and Hail.

The school would be closed at the discretion of the BOT Chairperson and Principal. Parents will be contacted prior to pupils being permitted to leave school grounds. Should we not be able to contact parents on the contact number held in our records, pupils would be supervised at school until such a time as suitable arrangements can be made.

Each situation will determine our reaction to it.

computers

These are tools for assisting learning. Each classroom has a networked computer or access to laptop pods with appropriate software. Our objective is that children develop confidence and skills in using these machines to assist their learning.

The school has developed a Bring Your Own Device (BYOD) policy and practices that are in effect this year.

Years 5 - 8 students may speak to Mr Crawford for information about BYOD. m.crawford@woodend.school.nz

School devices will continue to be provided by school.

UP
TO
DATE
NEWS!

enrolments

REQUIREMENTS:

Pre enrolments are entered on our website and then an appointment is made to meet and complete the enrolment. Birth certificate and immunisation information is required.

New Entrants usually make pre-entry visits with the new entrant class. We like each new entrant to have experienced several parts of the school day so that there are no surprises on the first day of school. These visits will be arranged with the class teacher once enrolment procedures are completed.



To email the Principal -
principal@woodend.school.nz



Please keep us updated of your child's medical needs, contacts etc as this ensures we can best look after your child should the situation arise.



FIRST AID



From time to time injuries do occur, in spite of careful supervision by the staff. Most problems are minor and are remedied by a quick visit with a staff member to the first aid cabinet. In the case of a more serious accident, parents will be contacted at once. Should the parents not be available the school will continue with the necessary steps in "loco Parentis" These may include - transport to a local doctor, and further steps (if necessary) on the advice of the doctor. Continuing efforts to contact parents will remain a priority. Once again the situation at the time will determine the steps we will take.

Please Note:

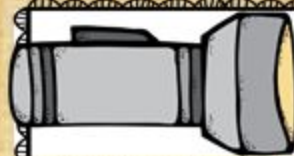
1. Medication - the school must have appropriate documentation before it is able to administer medication to children. The appropriate form is held in the office.
2. Allergies, reactions to stings etc - children having allergies or reactions that may adversely affect the health of the pupil should be known to the school.

ENTRY TO SCHOOL

There are three entrances to school. All bikes and scooters are to be wheeled into the school grounds and put in the appropriate space.

Parents are reminded of the yellow line directly outside this entrance and must not park on it while waiting for children.

The Rangiora Woodend Road entrance must be used with extreme care when dropping off and picking up students. The Main Road carpark entrance is for staff and service vehicles only. Children may enter the school grounds after the 8.30 am bell.



HEALTH NURSE

The Health Nurse visits the school at the request of the school. Her main functions include; discussing any health related problems, contacting the home for further discussion, investigating the relationship between poor health and learning failures, recommending suitable remedial action for health problems, availability to talk to parents, checking immunization programmes for 5 yr olds, health education.



The office is staffed from 8.00 am to 4.00 pm every day.



Common Diseases

The following guidelines should help you make a decision as to whether you should send your child to school or not.

1. Pediculosis (Head Lice) once effective medication has commenced there is no need for the child to stay away. The teacher should be informed so that a notice can be given to other parents to watch for further cases. See your local chemist for effective treatment.
2. Infectious Diseases – measles, whooping cough, chicken pox etc – get your Doctors opinion.
3. Skin Diseases – school sores, ring worm etc. A general rule would be that the child need not stay away provided she / he is getting appropriate and medically proven medication.
4. Injuries – please give us directions so that we may see that your wishes regarding participation in physical activity are carried out.

we ♥ school !



Make sure your details are up to date so we can contact you...

It is of great assistance if parents can ensure all clothing is named, especially at swimming time. Children should be regularly reminded of the true value of lost clothing and what its replacement will mean in financial terms. All unnamed clothing is kept in the lost property box in the Administration block. Parents are encouraged to regularly check the clothing from time to time to reclaim any of your child's clothing.

LOST PROPERTY

HEALTH

HEARING / VISION

Specialists visit the school to conduct hearing and vision tests and on children who have previously had problems in this area.

Parents of pupils found with concerns requiring further action will be notified direct from the Health authorities.

Woodend School Information Booklet

2022

ADMINISTRATION

LUNCHES:

Children are encouraged to bring a packed, balanced lunch to school. Children are NOT PERMITTED to leave the school grounds at lunch time to buy their lunches.

MONEY:

All money for trips, book clubs, stationery, special events etc is to be sent to the child's teacher in an envelope with the child's name, amount, and what it is for, clearly written on the outside. Teachers send over totaled amounts to the office for receipting and adding to the child's database.

NEWSLETTERS & NOTICES:

A school newsletter is published regularly using Hail. This can be accessed on our website, your phone through Schoolloop etc. Other notices specific to classes or events are sent home from time to time. Unless otherwise requested these are pushed out via Schoolloop and Hail. If you are not receiving notices etc please contact the office.

PARENT HELPERS

During Covid times parent helpers will not be able to help in classrooms. However in more normal times Parent helpers are always needed in and out of the classroom. Helpers can be called to help with reading and general assistance in classes, providing transport and supervision on class trips and camps, sports coaching, craft clubs and other fundraising. Woodend students are very fortunate to have so many parents (and often grandparents) who support their learning.

As part of our fundraising we need parents to help with single events such as the fair, family fun night and the Disco from time to time.

LIBRARY

The school library is now located in Room 1 and is well stocked with fiction, non fiction, reference, picture books and a computer. Each class has at least one session per week in the library to browse, read etc. Every 2nd year there is a book week to support the library and help raise funds for books.

The office is staffed from 8.00 am to 4.00 pm every day.





Woodend School Information Booklet 2022



ROAD PATROL

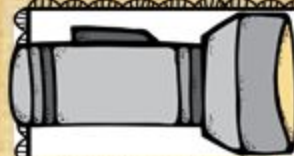


These are 'manned' on the Main North Road and School Road, by two senior school pupils under the supervision of a teacher or parent. The patrol operates from 8.30 am until 8.55 am. In the afternoon the patrol operates from 3.00 pm until **3.20 pm**. With the number of cars picking up children it is important that all cars stay clear of the yellow line to allow the wardens to see clearly. Whether your child walks or bikes to school, it is expected that a high standard of behaviour will be shown while on public roads and the road code is rigidly adhered to. The Police Traffic Education officer assists in the education of our children in road safety. Parental guidance is also of paramount importance in road safety.

We always need helpers for the road patrol duties. Please contact a.coyle@woodend.school.nz if you are able to help. Email Brenda b.fordyce@woodend.school.nz if you have any concerns..

PLAY AREAS

Parents are welcome to come into the school grounds with their children during after school hours or weekends. A senior playground located between the Admin block and Woodend South provides many challenges for older students. A high standard of behaviour is expected from all in the play areas. Please report any misuse of equipment, bad language, damage about the school or other inappropriate behaviour.



RECYCLING

The school tries to recycle as much as possible and we encourage our students to take home any uneaten food / rubbish etc.



The office is staffed from 8.00 am to 4.00 pm every day.



Woodend School Information Booklet



SPORTS

We are involved in the Kaiapoi Woodend Exchange programme for Years 5 – 8 in a variety of sports codes.

We are a member of Primary Schools Sports Association, which competes in athletics, swimming, & cross country at school, North Canterbury and Canterbury level.

Daily fitness Woodend Workout involves all students at school. We run a weekly sports programme for Years 0 – 8.

Junior school classes undertake modified versions of most of the above.

Swimming tuition is for all students across Years 0 to 7. MainPower runs the swimming programme and subsidises these lessons. We use the local pool for our tuition relying on buses to transport the students.



TECHNOLOGY

Year 7 – 8 pupils attend the Kaiapoi Borough School technology centre on Mondays each week.

A levy for each pupil is paid by the Board of Trustees while the materials (consumables) used must be paid for by the pupils before completed items can be taken away.



SCHOOL CHARTER

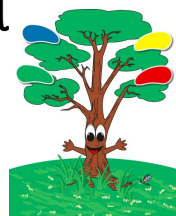
This is a legal agreement between your board of trustees and the Minister of Education.

Copies are available at school for parents to borrow.

(Refer Policies & Procedures on our website).



"Become part of our fundraising events"



STATIONERY

We hold limited stocks of the stationery packs and have available items that the students may need to purchase during the year.

Families can order online through Qizzle at the start of the year or from any other retail store.

Full new entrant packs are available from the school stationery shop.

As a general rule the responsibility for personal items and valuables at school is on the parents and the pupil involved, although the school would make every effort to ensure that the property is protected.

We discourage the bringing of toys and valuables to school. Cameras and valuables taken on school trips are the responsibility of the children concerned.

VALUABLES

CELLPHONES

The carrying of jewellery, i pods, and large sums of money is strongly discouraged. These can be signed into the office for safe keeping.

Cellphones are to be handed into the office before 9.00 am and collected after 3 pm.

we ♥ school !



We're on the Web! See us at:
www.woodend.school.nz

The Fund-raising and FUN raising body of Woodend School

FUNDRAISING

Are you available for one off events or a roster system ?? We would love a core of parents that we can count on for some of our fundraising events !!

We have established a committee who run the fun-raising and one fundraising event twice per year. We post the events on the facebook page so you will know what event is coming up.

The money that is raised from the fundraising goes directly to the children, helping with subsidizing school trips, activities and cultural events.

MISSION STATEMENT

To provide students at Woodend School extraordinary experiences, beyond what the Ministry of Education provide for, through Fun-raising and Fundraising.

SAUSAGE SIZZLE

We run the weekly sausage sizzles on Fridays - this of course is dependant on Covid restrictions.

\$5.00 = Combo - sausage, drink and cookie.

Sausage \$2.00

Drinks \$2.00

Cookie \$1.50

Money needs to be handed in to the roster team in the office with name and room number clearly identified.

Online payments can be made to our bank: 12 3616 0031570 00

SIGNING IN/OUT

If a student is arriving late, they must sign in when they arrive, using the Vistab system in the office. Again if a parent is taking their child to an appointment etc they need to sign their child out using this procedure. This ensures we know who is on site and who has left in the case of emergency.

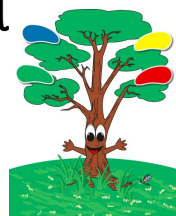
All visitors /contractors /relievers etc also use this system.

Contact - Rachel Stanley -
rachelstanley840@gmail





Woodend School Information Booklet 2022



UNIFORM

Girls

Bottle green polar fleece or sweatshirt with school logo

Navy blue track pants, leggings, or school shorts

Bottle green or white (long or short sleeved) polo shirt or skivvy

School culottes or dress for summer (green gingham check)

School winter weight culottes (navy)

Brimmed navy sun hat in terms 1 & 4 (bucket or full-brim styles acceptable)

Boys

Bottle green polar fleece or sweatshirt with school logo

Navy blue track pants, trousers, or school shorts

Bottle green or white (long or short sleeved) polo shirt or skivvy

Students are expected and encouraged to take pride in their general appearance.

Hair should be neat and tidy, and of a natural colour. Students with longer than shoulder length hair must tie it back.

Thermals if worn must be navy or white.

The only jewellery permitted at school are items of cultural significance, and these should be kept out of sight as much as possible.

Stud or small sleeper (one in each ear) are permitted.

Socks and tights for girls must be navy or white.

Footwear must be worn at all times, except with the teacher permission. Shoes must be suitable for the activities students engage in during the day.

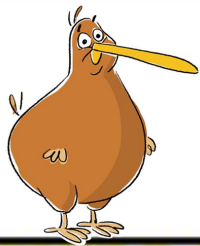
The consequences of breaching the dress code begin with the teacher speaking to the student about the breach and then contacting the parents if the breach continues.

Continued non-compliance will involve contact between principal or deputy principal and the parents.

we ♥ school !



We're on the Web! See us at:
www.woodend.school.nz



Whare Manu Groups



TEAMS

At Woodend School each child is put into a Whare Manu group. These groups are made up of children throughout the school and include all ages and all levels.

Whare Manu means 'bird house'. Birds were chosen because they link with our cultural narrative. Birds fly throughout and are a common link with Lagoons (Te Hapua), Rivers (Te Awa), Forests (Te Ngahere), and the Mountains (Te Maunga). The children are the birds that come from the different areas.

Children will be in the same Whare Manu groups as their brothers and sisters and stay with that group throughout their time at Woodend School



See our foyer for displays of our Whare Manu groups.

WHARE MANU GROUPS



ACTIVITIES

Whare Manu groups are used as part of our school reward system. Children get points for the Whare Manu group by making good choices and showing our Intelligent behaviours. At the end of the term points are totalled and there is a whole group reward for the winning team.

Other activities include Whare Manu days at school and Whare Manu trips outside of school.



Te Hapua 2022 Year 1/ 2



CULTURAL NARRATIVE



Safe and shallow waters: Our new tamariki are supported and guided. Learning is scaffolded.

Our Intelligent Behaviours are taught, encouraged and modelled.

Rich in nutrients: new families and tamariki often begin their association with **Te Kura Tuatahi o Pakiaka** (Woodend School) at this year level bringing new life to our community.



When our students show one of the Intelligent Behaviours they get their picture on the tree!! It shows they have had an amazing day

TE HAPUA



STAFF

Introducing -

Mrs Jo Bartlett (Team Leader) & Teacher for Year 2

NE Teacher - Miss Toni Ryan

NE Teacher - Ms Alex Prosser

Year 1 - Mr Logan Moore

Year 1 - Mrs Suzie Fraser

Year 1 / 2 - Miss Alissa Hutton

Year 1 / 2 - Mrs India Graham



j.bartlett@woodend.school.nz



Te Awa 2022 Year 3/4



CULTURAL NARRATIVE



Te Awa means the river. It symbolises the journey that the children will make. They are the water flowing along.

The children have grown, becoming more independent and have moved on from the lagoon. They are on a journey to achieve great things.

They will face waterfalls, rapids and droughts But on they go with help from their friends, teachers and family.

Using a growth mindset to learn how to overcome challenges on their own.



In Te Awa, we use the whole school reward system of Whare Manu points. You can earn Whare Manu points by doing the right thing in the right place at the right time.

Each week these points are collected and we announce the winning team. We then draw out 5 names from the winning Whare Manu team who choose a prize from the prize box.

TE AWA



STAFF

Introducing:

Ruataniwha - Mrs Louise Hayes (Team Leader)
Brooke Purves
Terence Langlands
Sarah Rattray



l.hayes@woodend.school.nz



Te Ngahere And Te Maunga



TE NGAHERE & TE MAUNGA

Te Ngahere represents the forest where the children will continue to grow physically, emotionally and academically. They have supported one another and have grown strong roots in their values and Intelligent Behaviours and will now reach upwards to stand as individuals. They will inspire and guide younger students and protect and nurture them as they mature to be fully grown. Te Ngahere is host to many manu (birds), mu (insects) and ngai tipu (flora) who are vital in producing oxygen for us to breathe. The diversity in the flora and fauna in Te Ngahere represents the diversity of thinking, culture and learning styles.

Te Maunga represents the place where our children experience a sense of clarity and purpose. To climb a mountain, our children need to be supported and supportive, encouraging and courageous. The right attitude and a growth mindset needs to be cultivated to help our children continue to climb when the journey is tough. A pathway is created for others to follow, by those that have gone before them. At the top of the mountain, our children can see what lies ahead of them. They are stronger for facing the difficulty of their journey.



Te Ngahere and Te Maunga combined are Te Pou. Our students strive to earn MANA by showing their Intelligent Behaviours consistently and with pride. MANA demonstrates that students are Team Players, Self Managers, Logical Thinkers and Creators and are role models for others.

TE POU



The Te Pou Team

Te Ngahere Teachers

Mike Crawford (Team Leader)
Caitlin Loose
Matt Manzl
Kay Mitchell - Teacher Aide

Te Maunga

Lucy French (Team Leader)
Hannah Lumsden
Kirsty Parker
Allie Coyle
Pip Haigh - Teacher Aide



m.crawford@woodend.school.nz
l.french@woodend.school.nz

You may have noticed...

The Parent Teacher Calendar App Is now... The Skool Loop App

The same fantastic app with a smart new look

✓ Remember to check your App/Play store regularly for updates.



Do you use your phone to check School Events or our website? A brand new FREE App that works well with our new website and newsletter is now available for Woodend School!

Skool Loop Calendar is a app that works well with our new HAIL website and Calendar.

We are able to send out notifications on this app - for emergencies, general notices etc.

Our website and Newsletter are now available at the touch of a button. Click the newsletter button that takes you to our website where you can scroll down to our publications to view our current newsletter (and previous ones) and our Information Booklet.

A particularly cool feature is the absentee button, click here to call, text or email the school if your child will be absent for the day. Please include child's name, space name or home room teachers name and most importantly the reason for any absence as we are required by the MOE to record this.

Our cellphone number to leave absences on is: **0212042348**

Simply download here for FREE at:

<https://itunes.apple.com/nz/app/ptcalendar/id772193965?mt=8>

or for android devices

<https://play.google.com/store/apps/details?id=com.ptcalendarapp&hl=en>

This app has been sponsored by local business which show up at the bottom of the page. Please support them!!!

**Our website and newsletter are still accessible through a normal web browser if you decide not to download this app.*

Have you downloaded our School app yet?
Never miss important school information again!



- ✓ Events
- ✓ Notices
- ✓ Instant school messages
- ✓ Absentee
- ✓ Newsletters
- ✓ Permission Slips



Simple free download: In Google play & App Store search 'Skool Loop' & choose our school once installed.

WOODEND SCHOOL

UNIFORM PRICE LIST

As of January 2018

School Loyalty Programme # 9993600

UNISEX UNIFORM RANGE

Description	Colour	Style No.	Sizes	Price
Drill Rugger Short	Navy	6934	5-7yrs	\$ 14.99
			8-16yrs	\$ 16.99
SS Polo w/transfer	White or Bottle	724517	4-6yr	\$ 21.99
			8-16yrs	\$ 22.99
Crew Tunic Sweatshirt w/transfer	Bottle	724512	5-16yr	\$ 25.99
Polar Fleece Jacket w/emb	Bottle	724523	5-7yrs	\$ 42.99
			8-16yrs	\$ 45.99
Polar Fleece Top w/emb	Bottle	724518	5-7yrs	\$ 42.99
			8-16yrs	\$ 45.99
Polar Fleece Vest	Bottle	6284	10-14yr	\$ 32.99
Fleece Trackpant	Navy	6055	5-7yrs	\$ 22.99
			8-16yrs	\$ 26.99
Slice Trackpant	Navy	99457	6-14yr	\$ 34.99
Beanie (Winter)	Bottle, Navy or Black	8082	OS	\$ 5.99
Aussie Drill Hat (Summer)	Bottle or Navy	6691	55-61cm	\$ 18.00
Raincoat	Black or Navy	6926	6-14yr	\$ 42.99

GIRLS UNIFORM RANGE

Description	Colour	Style No.	Sizes	Price
Polyviscose Culottes	Navy	70744	4-12yr	\$ 42.99
			14-16yr	\$ 46.99
Gingham Culottes	Bottle/White	10943	4-6yr	\$ 29.99
			8-16yr	\$ 32.99
Gingham Dress	Bottle/White	10930	4-6yr	\$ 42.99
			8-16yr	\$ 49.99
Ankle Sock (2 pack)	Black or White	76755	Shoe Size	\$ 6.99
Knee sock	Navy	59201	Shoe Size	\$ 9.99
Tights	Navy	714588	Shoe Size	\$ 7.99

Don't forget up to 10% of sales from all Schooltex labelled garments go back to your school

thewarehouse 
where everyone gets a bargain

The Warehouse RANGIORA 03 313 0414

Please note all prices are inclusive of GST and are subject to change without notification

Restorative Justice Practice.

Woodend School is a school that practices the principles of Restorative Justice in the way that we deal with Behaviour and approach personal relationships.

It fits in well with the Principles in our School Charter & Strategic Plan:

What is Restorative Practice?

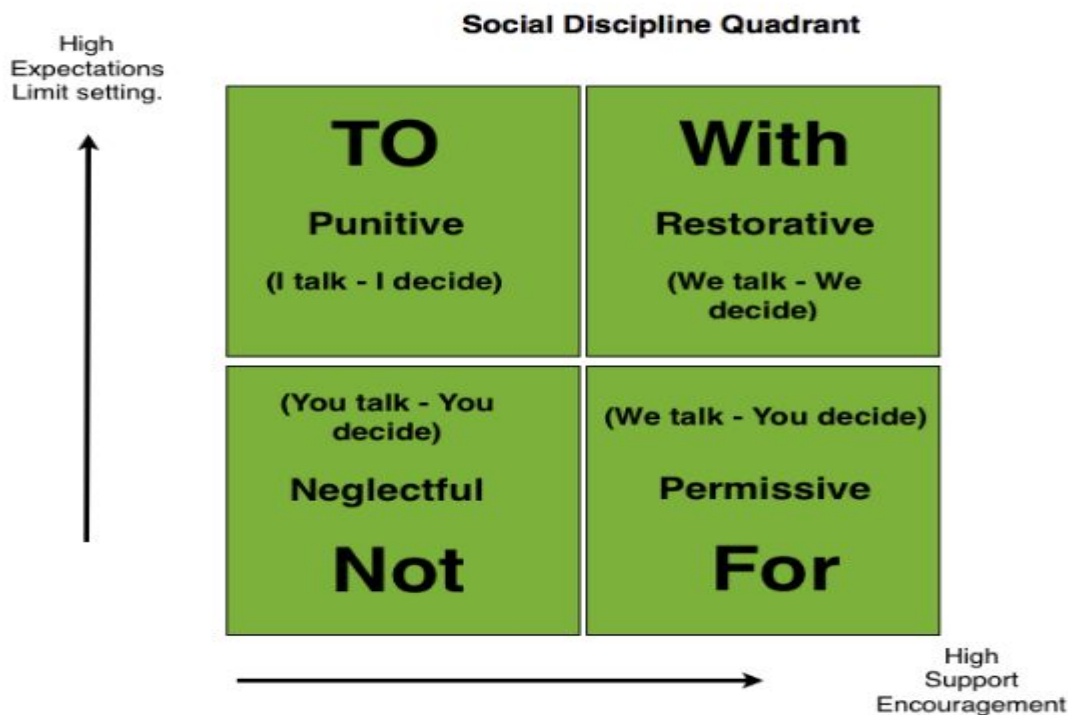
Restorative Justice is a way of seeing that inappropriate behaviour, in this case at school, causes harm to people, relationships, and the school community. We believe a just/ fair response is needed to deal with any wrongdoing. The best way to do this is for the people involved to meet to discuss the harms and how to bring about resolution and move on.

For Restorative Practices to be effective in changing behaviour, we ask the students questions to foster awareness of how others have been affected by their actions. If we just punished students they see themselves as victims which distracts them from noticing others feelings. Restorative practices encourage students to take responsibility for what they have done and see any wrong doing as an opportunity to learn.

Restorative practices fit like a glove with our Intelligent Behaviours:

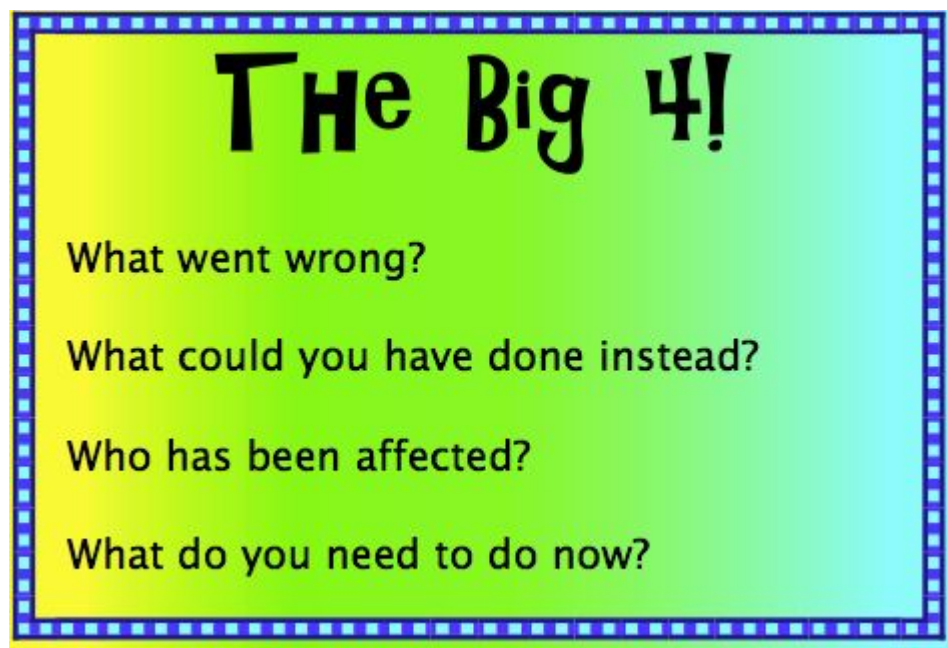
- **Team Players** -are respectful, kind, caring, honest, and can show empathy.
- **Self-Managers** - are courageous, confident, disciplined, persistent and resilient.
- **Logical Thinkers** - are reflective, and can inquire, problem-solve and think critically.
- **Creators** - are creative, curious, flexible, adaptable, can think outside the square and have a sense of humour.

At Woodend School we hope our students, parents and staff apply restorative practices in all interactions, in both directions, be they student to student, student to staff, student to adult or parent to staff.



The Restorative Chat:

When working with students around any incidents in the classroom or playground the Restorative Chat process provides a basis for responding to incidents using restorative questioning to allow the incident to be unpacked and those involved to take responsibility for the part, restoring any harm done.

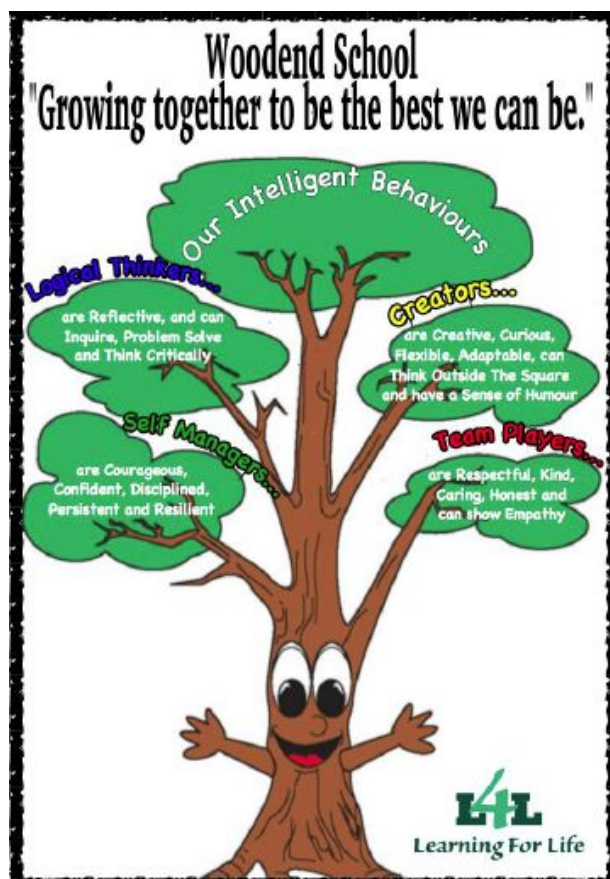


Circle Time:

Circle Time is just one of the aspects of Restorative Practice that we use. At Woodend School we regularly provide time to hold Circle Time sessions to provide an opportunity to discuss issues that they feel are important and require some form of resolution. Circle Time is also used to teach the social skills needed to “relate well to others, and be able to take different roles in different situations.

What are the benefits of Circle Time?

Circle Time builds self-esteem by allowing all students the opportunity to contribute their feelings and ideas during each discussion. All contributions are valued rather than judged on whether they are right or wrong.



L4L

Learning For Life

Motto:	Learning 4 Life (L4L)
Vision:	Growing Together-To Be The Best You Can Be
School Goals:	<ul style="list-style-type: none"> Ensuring emotional and physical safety and happiness Practicing inclusiveness and respecting differences Providing challenging relevant learning opportunities Using Innovative Learning Practices Working as part of the community
Cultural Competency - Learning Success for Maori:	<p>Ako - practice in the learning space and beyond</p> <p>Whanaungatanga - Relationships (learners, school-wide, community) with high expectations</p> <p>Tangata Whenuatanga - Place-based, socio-cultural awareness and knowledge</p> <p>Manaakitanga - Values - integrity, trust, sincerity, equity</p> <p>Wānanga - Communication, problem solving, innovation</p>
Intelligent Behaviours:	<ul style="list-style-type: none"> TEAM PLAYERS are Respectful, Kind, Caring, Honest and can show Empathy. SELF MANAGERS are Courageous, Confident, Disciplined, Persistent and Resilient. LOGICAL THINKERS are Reflective, and can Inquire, Problem Solve and Think Critically. CREATORS are Creative, Curious, Flexible, Adaptable, can Think Outside The Square and have a Sense of Humour.



Where is your mindset?

Fixed

OR

Growth

- ★ Avoids challenges
- ★ Gives up easily
- ★ Sees effort as a waste of time
- ★ Ignores feedback
- ★ Feels threatened by the success of others

- ★ Embraces challenges
- ★ Keeps going when things get difficult
- ★ Sees effort as the path to mastery
- ★ Learns from feedback
- ★ Takes inspiration from the success of others



The 7 Learning Principles at Woodend

1. Having learning and learners at the centre
2. Acknowledging the social (co-operative and collaborative) nature of learning
3. Recognising that motivation and emotions are integral to learning
4. Recognising individual differences
5. Stretching/extending all students
6. Using any assessment and/or information to inform next learning
7. Building horizontal and vertical connections within and across schools and the wider community.



March 2022

WOODEND SCHOOL VOLUNTARY FAMILY CONTRIBUTION 2022:

Each year the Board of Trustees writes to parents outlining the need for Woodend School to ask our parents for a donation. Despite our growing roll and the increased funding that this growth provides, there is still a shortfall between the funding provided by the Ministry of Education and the budget required for running our school.

Your school donations are used to help bridge the funding gap, and are vitally important to help provide valuable resources and enhance our learning environment.

This year we intend to target our school donations towards subsidising the Whare Manu Day, and other extra curricular activities for all our students.

The Board of Trustees has agreed to maintain the status quo, with the following recommendation:

\$95.00 for one child reducible to \$80.00 if paid by the end of Term 2 (8/7/22)

\$125.00 for two or more children, reducible to \$100.00 if paid by end of Term 2 (8/7/22).

Payments can be made in instalments during the term - just contact Chris in the Office. A receipt will be issued on payment. Payment can be made via online banking using the details as follows:

ASB – 12-3616 -0031570 - 00

Please ensure your family name and the code 1030 is used when paying online.

*Thank you for your consideration of this. Donations are voluntary and as such we appreciate any support that you can provide to help us, help our students **"Growing Together – To Be The Best We Can Be"***

It is important to remember that school donations are a voluntary, tax-deductible payment and you can claim 33.3% of this payment back in your tax return.

Andrew Retallick Principal Mark Paterson Chairperson Board of Trustees.

Please detach and return to Woodend School Office if paying by cash.

Family Surname: _____

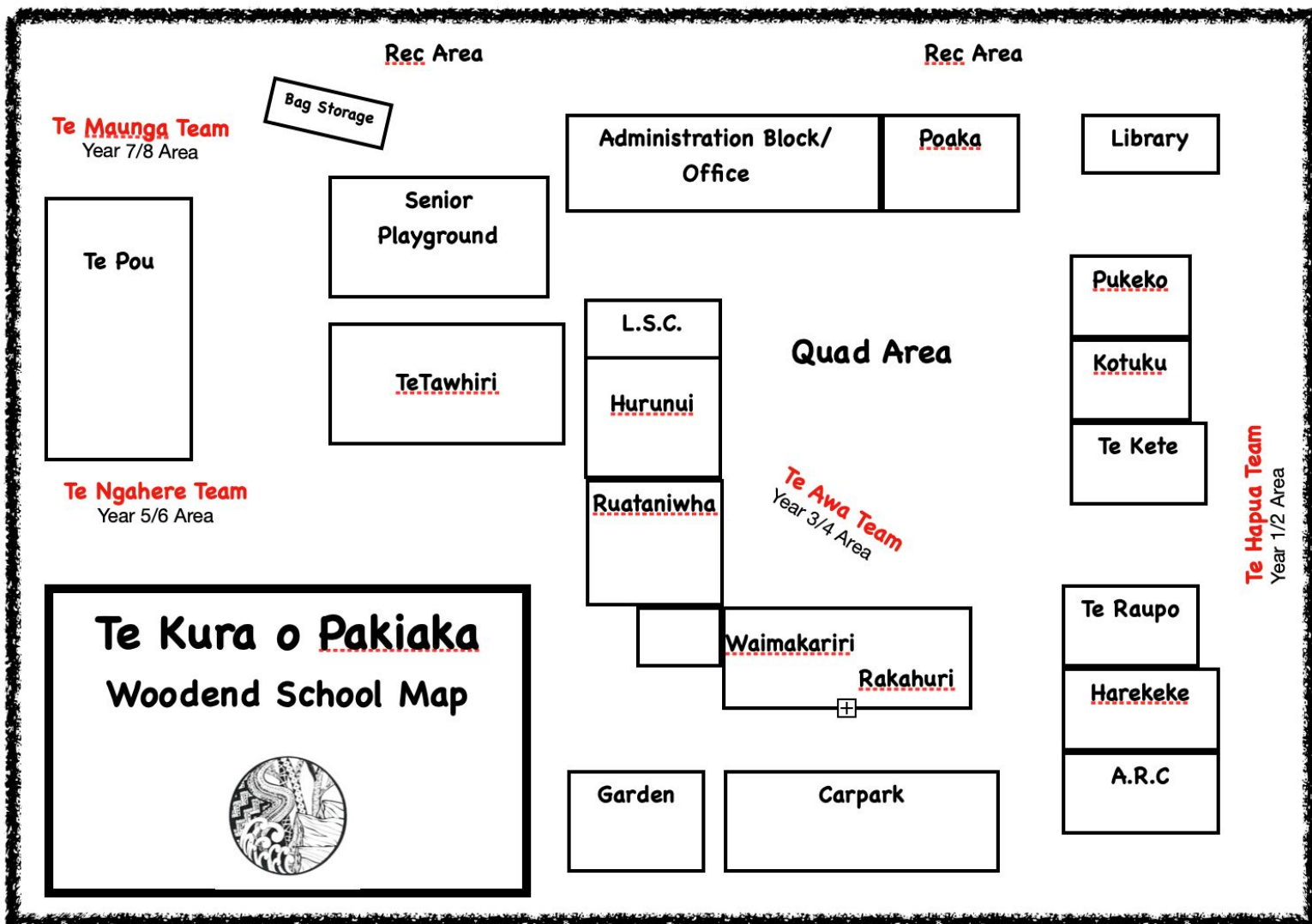
Address: _____

Voluntary Family Fund 2022

Please find enclosed _____ as our 2022 Voluntary Family contribution

Woodend School - Where We Are 'Growing Together To Be The Best We Can Be'





Te Pou
(meaning a pillar or an upright figure)

Te Pou is the upright two storey building which is the learning block for Te Maunga (Years 7 & 8) and Te Ngahere (Years 5 & 6)

Te Kura o Pakiaka
Woodend School
Organisation 2022

Principal:
Andrew Retallick

Admin / Support Staff

Mrs Chris Bucknell
Mrs Pene Price
Mrs Kay Mitchell
Mrs Cindy Meyers
Mrs Pip Haigh
Mrs Ana Dos Santos Martins
Mrs Rachael Paterson

Caretaker: Mr Rod Little
Cleaners: Mrs Alison Scarlett
Jack & Ling

Learning Support Co-ordinator:
Mrs Annie Easter

Deputy Principal:
Mrs Brenda Fordyce

Te Maunga Team

Lucy French Team Leader
Hannah Lumsden (0.6)
Kirsty Parker (0.4)
Allie Coyle

Te Awa Team

Louise Hayes Team Leader
Brooke Purves
Sarah Rattray
Terrence Langlands

Te Ngahere Team

Mike Crawford Team Leader
Matt Manzi
Caitlin Loose

Te Hapua Team

Jo Bartlett Team Leader
India Graham
Alissa Hutton
Logan Moore
Toni Ryan
Suzie Fraser
Alexandra Prosser

Part-time Release Teachers:

Janice Adams
Jenny Collinson
Sarah McArlay
Emma Neylon
Adelle Thompson