

Aspire Canterbury

Whānau Transitions Seminar 2022

Welcome!

Nau mai, haere mai, tauti mai.



0800 347 242 | disinfo@aspirecanterbury.org.nz

www.aspirecanterbury.org.nz





**Ka tangi te tītī,
ka tangi te kākā,
ka tangi hoki ahau.
Tihei mauri ora!**

The cry of the tītī, the cry of the kākā, tis
mine also, bless this occasion



E te tī, e te ta

To those from all directions





Mauri ora ki a koutou

Greetings to you all





Kei te mihi ahau ki te mana whenua, āra ko Ngāi Tūāhuriri, tēnā koutou

I acknowledge Ngāi Tūāhuriri as the people of this land





He mihi ki ngā kaikōrero, ko Caitlin, ko Andrew, ko Tom, ko Jessie, ko Fiona, rātou ko Vicky, tēnā koutou

A greeting to our speakers: Caitlin Fleming, Andrew
Robertson Tom Callanan, Jessie Pere, Fiona Frew, and Vicky
Wood



He mihi ki ngā manuhiri, tēnā koutou

A greeting to all the visitors today





**E tū ana ahau hei kaikōrero
mō Aspire Canterbury.**

I am standing as a speaker for Aspire Canterbury.

▶

Ko wai au? No Ingarangi, No Kotirana ōku tīpuna

Who am I? My ancestors are from England and Scotland





Nō Te Whanganui-a-tara ahau

I am from Wellington



He kaiarataki ahau ki te kura o Pītau-Allenvale me te Kāhui Ako o Waimairi-iri

I am senior leader at Pītau-Allenvale School and an Across School Teacher for the Waimairi-iri Kāhui Ako



Ko Graeme Eastwood tōku ingoa

My name is Graeme Eastwood



Nāu te rourou, nāku te rourou, ka ora ai te iwi

With your food basket and
my food basket the people will thrive

*This whakataukī talks to community, to collaboration
and a strengths-based approach. It acknowledges
that everybody has something to offer, a piece of the
puzzle, and by working together we can all flourish.*



**Nō reira, tātou mā,
tēnā koutou katoa**

Therefore, to all here, greetings





Karakia Timataka

Tūtawa mai i ruka

Tūtawa mai i raro

Tūtawa mai i roto

Tūtawa mai i waho

Kia tau ai te mauri tū,

te mauri ora ki te katoa

Hui ē! Tāiki ē!

I summon from above,

I summon from below,

I summon from within and from
the surrounding environment

The universal vitality and energy
to infuse and enrich all present

Unified, connected and blessed.

Aspire Canterbury

Inspiring Independent Living

- **Disability Information**
- **Total Mobility**
- **Mobility Equipment Sales and Hire**
- **Mobile Service**



0800 347 242 | disinfo@aspirecanterbury.org.nz

www.aspirecanterbury.org.nz



Aspire Canterbury

Whānau Transitions Seminars 2022

Agenda

- Caitlin Fleming
- Andrew Robertson and Tom Callanan - Enabling Good Lives
- Fiona Frew and Jessie Pere - Ministry of Social Development
- Vicky Wood - Community Law Canterbury
- Q&A



0800 347 242 | disinfo@aspirecanterbury.org.nz

www.aspirecanterbury.org.nz



Aspire Canterbury

Whānau Transitions Seminars 2022

Our first speaker ...

Caitlin Fleming



0800 347 242 | disinfo@aspirecanterbury.org.nz

www.aspirecanterbury.org.nz

Vegepod

Outside activity
with my Carer
Support and
great food
flavours



Thermomix

Great Safety
Features and
step by step
instructions



Washing Machine Washing line Iron Board & Iron

I am not very
tall so things
need to be
lower



Recreate

New stories to
tell / Fun with
my Friends





Life's
Tools



Phone
Laptop
Bike

Aspire Canterbury

Whānau Transitions Seminars 2022

Our next speakers ...

Andrew Robertson & Tom Callanan

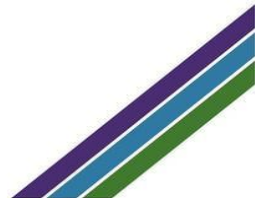
Enabling Good Lives



0800 347 242 | disinfo@aspirecanterbury.org.nz

www.aspirecanterbury.org.nz

EGL Personal Budgets



Disability Support Funding



All disability funding that was provided through the Ministry of Health has now been transferred to Whaikaha.



Traditional Funding



EGL Personal Budget



Exceptions

These do not go into a Personal Budget

Ministry of
Education Funding

- Funding for specialist teacher time

Ministry of Social
Development
Funding

- Employment Support and Benefits (I.E. WINZ funding)

Whaikaha Funding

- Residential Support Subsidy (RSS)



How do I set up an EGL Personal budget?

Complete a referral to EGL, then:

- Choose a Connector to work with
- Choose which Funding Host you want to host your EGL Personal Budget. Your Connector can help you choose the host that suits you best
- LifeLinks can then turn the dollar value of your current supports into an EGL Personal Budget, and allocate it to your host
- Your Connector can help with this, or you can contact your LifeLinks Outcome Coordinator directly



How can I use my EGL budget?

Personal Budgets are administered by a funding host

-You can choose your host based on the services they offer that best suit you; or even split your budget between more than one.

A funding host might:

- Purchase on your behalf
- Reimburse you for things you have already paid for
- Put some of your budget directly into your account
- Provide some of their own services



What can I spend it on?

Anything that meets the purchasing guidelines!

If:

- It is a disability related cost,
- That contributes to your good life,
- Is a cost effective option, and
- Is not meant to be funded by someone else

Then you can use your Personal Budget for it.

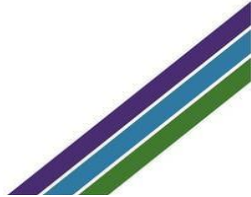
- Talk to your EGL Kaitūhono/Connector or fundinghost about what meets the guidelines.



Purchases are for a purpose

Example Purpose:

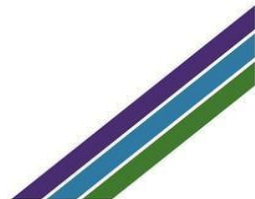
Greater independence in day to day tasks



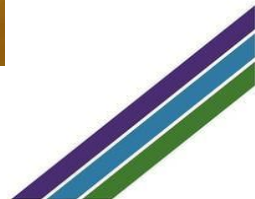
Purchases are individual

Example Situation:

A young woman using a chair, living rurally, wants to be able to do her own washing independently and contribute to her community.



Enabling Good Lives



Who are the “hosts”?

- Manawanui
- Brackenridge Estate Limited
- CCS Disability Action Canterbury West Coast Incorporated
- EMERGE Aotearoa Limited
- Hawksbury Community Living Trust
- Hohepa Services Limited
- IDEA Services Limited
- NZCare Group Limited
- Rosewood Limited
- SkillWise
- The Chris Ruth Centre Trust
- The Florence Nightingale Agency Limited



Questions?



Web: www.enablinggoodlives.co.nz



EGL Christchurch young people and families

Phone: 0800 225 570

Email: info@eglives.co.nz



Aspire Canterbury

Whānau Transitions Seminars 2022

Our next speakers ...

Jessie Pere and Fiona Frew


Ministry of Social Development



0800 347 242 | disinfo@aspirecanterbury.org.nz

www.aspirecanterbury.org.nz

Work & Income



Overview of Work & Income services



MINISTRY OF SOCIAL
DEVELOPMENT
TE MANATŪ WHAKAHIATO ORA

Who is Work and Income?

As the name suggests;

1. support people to find work, training or upskill
2. financial assistance
3. housing



Work

Work can improve your life and give you independence. When it's right for you and your family, we have dedicated staff and partnerships with providers that can help you find work, training, or become self-employed; e.g. Creative Works (Emerge), Comcare CCS Disability Action, Here Toitu



Income

Main Benefit

Income but not asset tested



Main Benefits

- Jobseeker Support
- Supported Living Payment
- Sole Parent Support
- Orphans Benefit and Unsupported Childs Benefit
- NZ Superannuation



Supported Living Payment

Supported Living Payment is for people who are not able to work because they are:

- Permanently and severely restricted in their capacity for work because of a health condition, injury, or disability, totally blind or
- caring full-time for someone at home who would otherwise need hospital-level or residential care (or equivalent) who is not your partner.



Extra Help

Extra Help

Income and or income and asset tested



Extra Help

Don't need to be in receipt of benefit
Maybe income and asset tested

- Accommodation Supplement
- Child Disability Allowance
- Childcare Assistance
- Disability Allowance
- Winter Energy Payment



Accommodation Supplement

- Provides assistance towards accommodation costs: Board, rent, mortgage
- Don't have to be getting a benefit
- Income & asset tested
- There are maximum rates



Disability Allowance

A weekly payment for people who have regular, ongoing costs because of a disability

- Income tested
- How much you get depends on your costs
- Up to a maximum of \$70.04 per week
- Not to be confused with Child Disability Allowance
- Can help with costs like; Dr fees, prescription charges, transport to appointments



Child Disability Allowance

- Non income tested allowance, available to the principal caregiver of a dependent child with a serious disability .
- Paid in recognition of the extra care and attention required.
- May also be able to receive a Disability Allowance



Hardship assistance

Hardship assistance

Income and asset tested



One-off hardship assistance

- To help you pay an essential or emergency cost if you can't pay it another way.
- Income and asset tested
- May need to repay the money



Work & Income Website

www.workandincome.govt.nz

WORK AND INCOME
TE HIRANGA TANGATA

COVID-19 support

Employers

Providers

myMSD login

Benefits and payments ▾

Work ▾

On a benefit ▾

Housing ▾

Search



Kia ora, welcome to Work and Income

We're here to help you financially if you're on a low income or not working, support you into work, and help you with housing.

Our online services

COVID-19 support

Check what you might get

Find work

Apply online

MyMSD

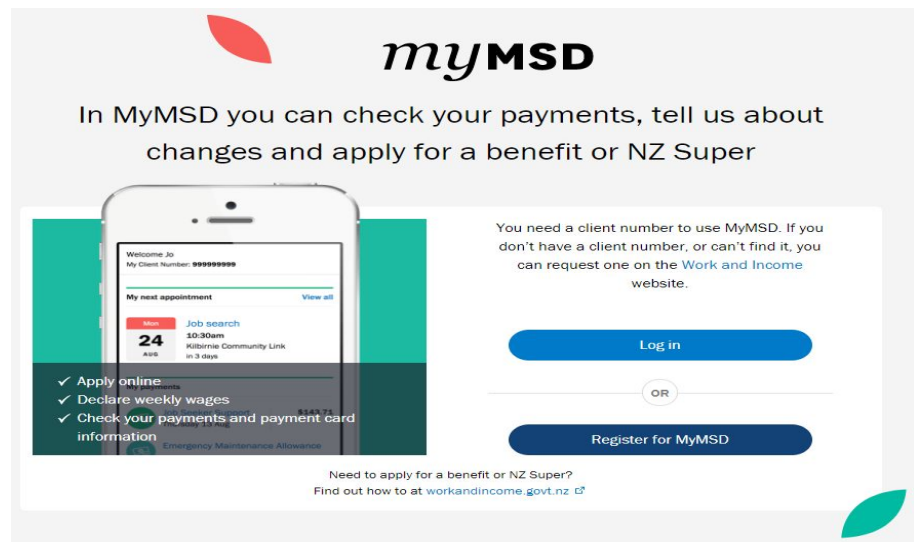
Follow us on Facebook



MINISTRY OF SOCIAL
DEVELOPMENT
TE MANATŪ WHAKAHIATO ORA

MyMSD

- Online service where you can manage your information online.
- Can be accessed via smart phone, tablet or computer
- You need a client number and cell phone or email to set up an account
- You can then access and manage your own information including, applying for help, checking your payments, debts, letters and telling us about changes



Information for Carers

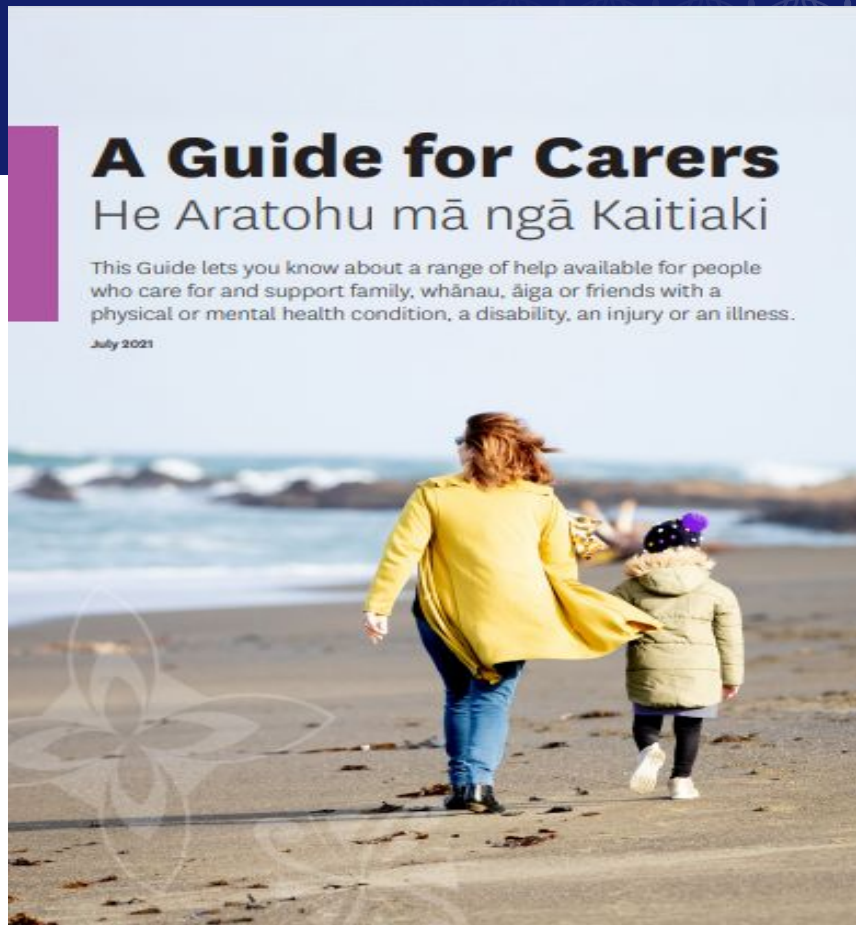
MSD website

Information for family, whanau and āiga carers

A Guide for Carers - He Aratohu mā ngā Kaitiaki booklet.

- Money
- People
- Things
- Directory

Related links



MINISTRY OF SOCIAL
DEVELOPMENT
TE MANATŪ WHAKAHIATO ORA

Aspire Canterbury

Whānau Transitions Seminars 2022

Our next speaker ...

Vicky Wood

Community Law Canterbury



0800 347 242 | disinfo@aspirecanterbury.org.nz

www.aspirecanterbury.org.nz

COMMUNITY LAW CANTERBURY



NEVER HEARD OF COMMUNITY LAW ??

- We are **one** of 24 Community Law Centres around New Zealand.
- There are three specialist centres
 - Youth Law
 - Auckland Disability Law
 - Ngai Tahu Law Centre
- Each law centres are independently managed, although all are part of a coalition.
- Each provides the same core services, but also has it's own areas of expertise.

COMMUNITY LAW CANTERBURY

Our main office is located at 198 Montreal Street

We cover all of Canterbury, Grey & Westland districts

We run regular outreach clinics

We have some specialist services

200 + volunteer law students, lawyers & employment advocates

40 + staff including 20 + lawyers



IN PERSON

198 Montreal
Street,
Christchurch
Central



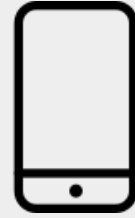
EMAIL

We offer legal
information via
email:
admin@canlaw.org.nz



PHONE

Give us a call for
some legal
information. Calls
are answered by
paid staff or
student volunteers.



TEXT

Text us on –
027 537 0156

CLINICS / SERVICES

FAMILY LAW

We have a team of experience family lawyers who can advise on Family Violence, Oranga Tamariki, Guardianship & PPR.

EQC & INSURANCE

Assist property owners with homes damaged by the Canterbury & Kaikōura earthquakes, and the Westport flooding.

CIVIL MATTERS

We advise on a variety of civil law including, employment, neighbour disputes, financial disputes.

CRIMINAL

We can advise on criminal matters and tell you what to expect in court.

YOUTH ADVOCACY

Provide support and advocacy to primary school and high school students and their families at school board of trustee suspension hearings where student is at risk of being excluded or expelled from school.

ACC & WINZ

We can provide advice on your entitlements with ACC & Work and Income.



EPOA'S

Key points:

- Why do I need an EPOA?
- What is an EPOA?
- Legal Requirements

WHY DO I NEED AN ENDURING POWER OF ATTORNEY?

If you want to plan ahead for the future

If you are concerned you may lose decision making

Capacity

What is 'mental capacity'?



WHAT IS AN EPOA?

A legal document saying who you would like to make decisions on your behalf when you no longer can.

Can ONLY set up while you have mental capacity.

The Donor

The Attorney

Personal Care and Welfare EPOA.

Property EPOA.



LEGAL REQUIREMENTS

- The donor & the attorney(s) must sign the EPOA.
- The attorney's signature must be witnessed separate from donor or donor's witness.
- The donor's witness must be a lawyer, legal executive or an officer of a trustee corporation.
- Before the donor signs the EPOA, the donor's witness must explain the effects and implications of the EPOA, and the donor's legal rights



ATTORNEY'S RESPONSIBILITIES

TO ACT IN YOUR BEST INTERESTS

**CONSULT WITH YOU, AND ENCOURAGE YOU TO DEVELOP
AND EXERCISE YOUR CAPACITY**

CONSULT WITH OTHERS NAMED IN YOUR EPOA

KEEP RECORDS OF ALL FINANCIAL TRANSACTIONS

GIVE INFORMATION TO PEOPLE NAMED IN YOUR EPOA

ATTORNEY'S RESTRICTIONS

**THEY CANNOT ENTER YOU INTO A MARRIAGE OR CIVIL UNION,
OR DISSOLVE YOUR MARRIAGE OR CIVIL UNION**

THEY CANNOT ADOPT ANY OF YOUR CHILDREN

REFUSE NECESSARY MEDICAL TREATMENT

THEY CANNOT AGREE TO ELCTRO-CONVULSIVE TREATMENT

THEY CANNOT AGREE TO BRAIN SURGERY; OR

ALLOW YOU TO BE PART OF MEDICAL EXPERIMENTS

THANK YOU

CONTACT US

Phone (03) 366 6870

0508 CAN LAW – 0508 226529

Email

admin@canlaw.org.nz

Website

www.canlaw.org.nz



Aspire Canterbury

Whānau Transitions Seminars 2022



Questions?

0800 347 242 | disinfo@aspirecanterbury.org.nz

www.aspirecanterbury.org.nz





Karakia Whakamutuka

Unuhia te pō, te pō whiri mārama

Tomokia te ao, te ao whatu tākata

Tātai ki ruka, tātai ki raro, tātai aho rau

Haumi e, hui e, tāiki e!

From confusion comes
understanding

From understanding comes unity

We are interwoven, we are
interconnected

Together as one!