

## TIMEZERO FLEET TRACKING FOR TZ PROFESSIONAL VERSION 4

### SINGLE VESSEL TRACKING (FREE SERVICE)

Basic tracking of a single vessel is free, accessing <https://cloud.mytimezero.com/>.

This is a great way to share data to and from the ship, for free (with basic functionality).

The anchor watch is a nice feature.

While the shoreside party can receive updates on ship position, there is no boundary alerting with <https://cloud.mytimezero.com/> (users that require boundary alerting will need TZ FLEET TRACKING (paid) service).

Users will require:

- a computer with internet connectivity on the vessel, equipped with TZ Professional v4 software\*,
- internet connectivity on a shoreside device (computer, tablet or phone)
- and you need to create a MyTIMEZERO account

\*Please note Fleet Tracking is only available on **version 4** of [TimeZero Professional](#). Users running version 1/2/3 of TimeZero Professional would require the (paid) upgrade to v4 (ENL can quote to upgrade, on request).

See [MyTIMEZERO](#) section for more information on creating accounts and logging into devices.

### TZ HOMEPORT

If you prefer to have something a bit more advanced than the TZ Cloud browser, then you can purchase a shore-based version of TZ Professional called "TZ HOMEPORT". TZ HOMEPORT has similar (advanced) tools & capabilities as the TZ Professional system on the vessel and makes for excellent shoreside monitoring program.

Contact ENL for TZ HOMEPORT pricing if this is of interest.

### TZ COASTAL MONITORING - COMING SOON Q2, 2022

"TimeZero Coastal Monitoring" (TZCM) is a coastal surveillance system. <https://www.coastalmonitoring.com/> - TimeZero are developing a significantly more powerful Fleet Tracking Management component that will be accessible within their upcoming version 3 TZCM release (it's still under development).

TZCM will provide a much higher level of Fleet Tracking capability. The system would allow organizations to configure their own fleet & sub fleets (internally & independently). They could also configure your own alarm reporting and user groups to receive alarms via emails and/or SMS. It also includes advanced boundary reporting, so great from monitoring fishing activity and triggering associated alarms internally.

### FLEET TRACKING (PAID SERVICE)

For organizations (with vessels equipped with TZ Professional v4 and internet connectivity) that are looking to track multiple vessels, TIMEZERO offer an excellent (paid) subscription service.

Many vessels already have TZ Professional and VSAT/Satcom connectivity, so it can be a far more cost-effective tracking system than other satellite-based methods.

Video introduction/overview: <https://youtu.be/cowme0ZgNQ>

## TZ FLEET TRACKING PRICING

The Subscriptions cost is charged per vessel, and there are discounts available for larger fleets.

### **Tier 1 - applies for first 10 vessels**

**TZ-FLEET-1-10** TZ Fleet Tracking - PER VESSEL - annual subscription NZD \$350+GST (per vessel)

### **Tier 2 - applies for vessels #11 to 30.**

**Note: first 10 vessels to be billed at Tier 1**

**TZ-FLEET-11-30** TZ Fleet Tracking - PER VESSEL - annual subscription NZD \$220+GST (per vessel)

### **Tier 3 - applies for vessels #31 and more.**

**Note: first 10 vessels to be billed at Tier 1 & next 20 vessels at Tier 2**

**TZ-FLEET-30+** TZ Fleet Tracking - PER VESSEL - annual subscription NZD \$175+GST (per vessel)

#### *Example:*

*Say the client has 40 vessels in their fleet, then their billing structure would be as follows:*

*First 10 vessels would be invoiced at NZ \$350+GST per vessel*

*Next 20 vessels would be invoiced at NZ \$220+GST per vessel*

*Other 10 vessels would be invoiced at NZ \$175+GST per vessel*

## TZ FLEET TRACING BENEFITS & FEATURES

The Fleet Tracking service allows users to group multiple vessels and command centres into a "Fleet"

- Send & Receive: Positions | Depth | Wind (adjustable interval 5s to 1H)
- Store & Forward: Computer can be offline up for 7 days
- Dedicated Fleet Tracking List & Icon (with customizable nicknames & colours)
- Fleet target filters by: Speed | Colour | Last Transmission
- Fleet Target trails & Record/Replay
- Send and receive user object to a specific vessel or fleetwide Sending an updated version of the same user objects does not duplicate it!
- Includes all the international SAR patterns
- Pattern can be created graphically using the route tool/manually (numerical values)
- TZ Cloud allows SAR routes to be shared directly with all vessels
- Acknowledgment of reception
- Alarm Zones react to Fleet Targets
- "Anchor Watch" on Fleet Targets (alert when a vessel moves)

#### **Shoreside Control:**

- Dispatch SAR routes from Operating Center (TZ Professional Homeport)

- Photos sent back to the Operating Center (for evidence or log)
- Track & help dispatch assets (Permanent or intermittent Internet access)
- Suits Coast Guard / Water Police / Search & Rescue operations

Interested in other TZ Pro features? This is a great video, as it highlights the key features: [Discover TZ Professional](#)

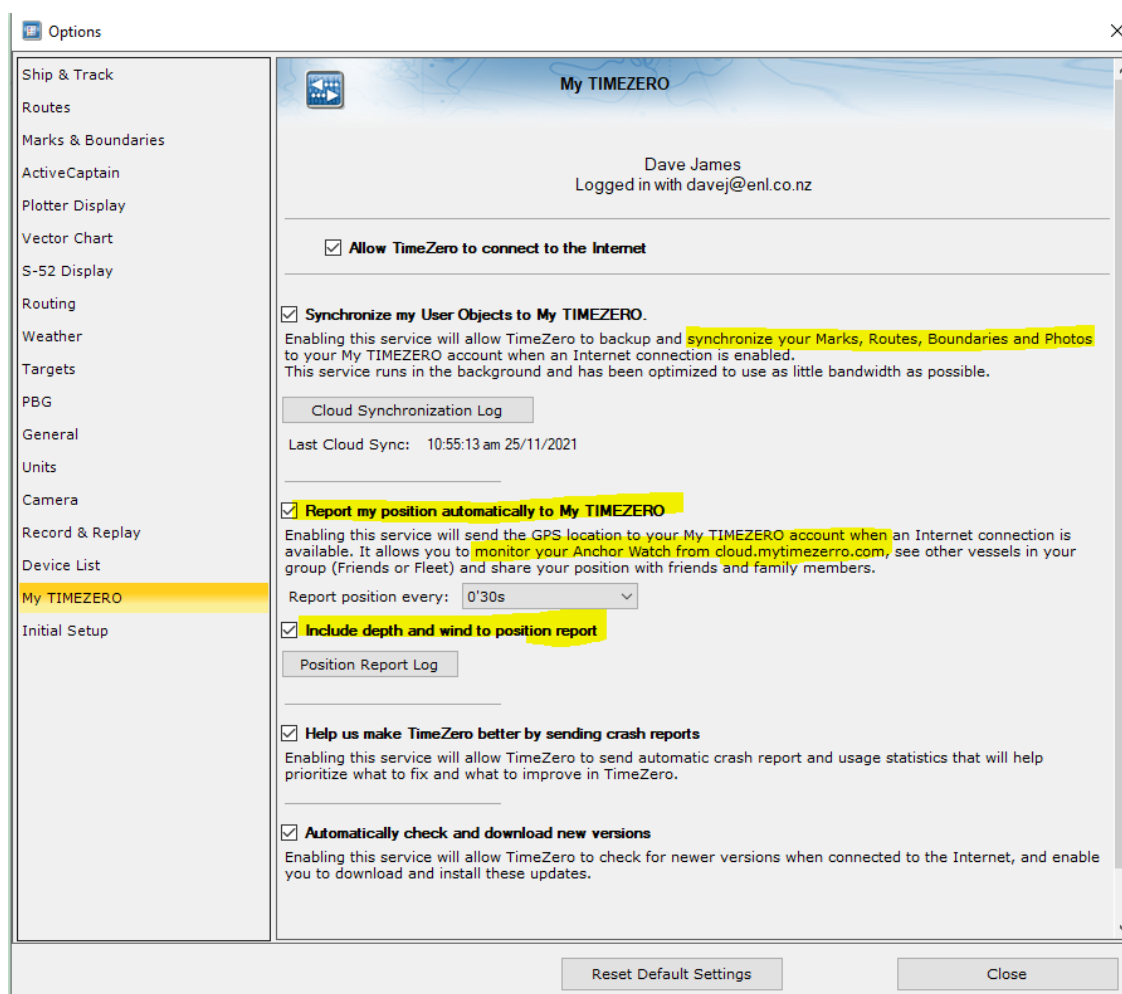
## MyTIMEZERO

### Creating a MyTIMEZERO ACCOUNT

It is easy to [create a free MyTimeZero](https://mytimezero.com/) account at <https://mytimezero.com/>. Each vessel to be tracked will require it's own specific MyTIMEZERO account

### LOGGING INTO MyTIMEZERO ON THE VESSEL

Once you have created a My TimeZero account profile/s, you then login on the vessel/s TZ Professional systems (Open TZ Professional > click TZ logo for Options > navigate to My TIMEZERO section



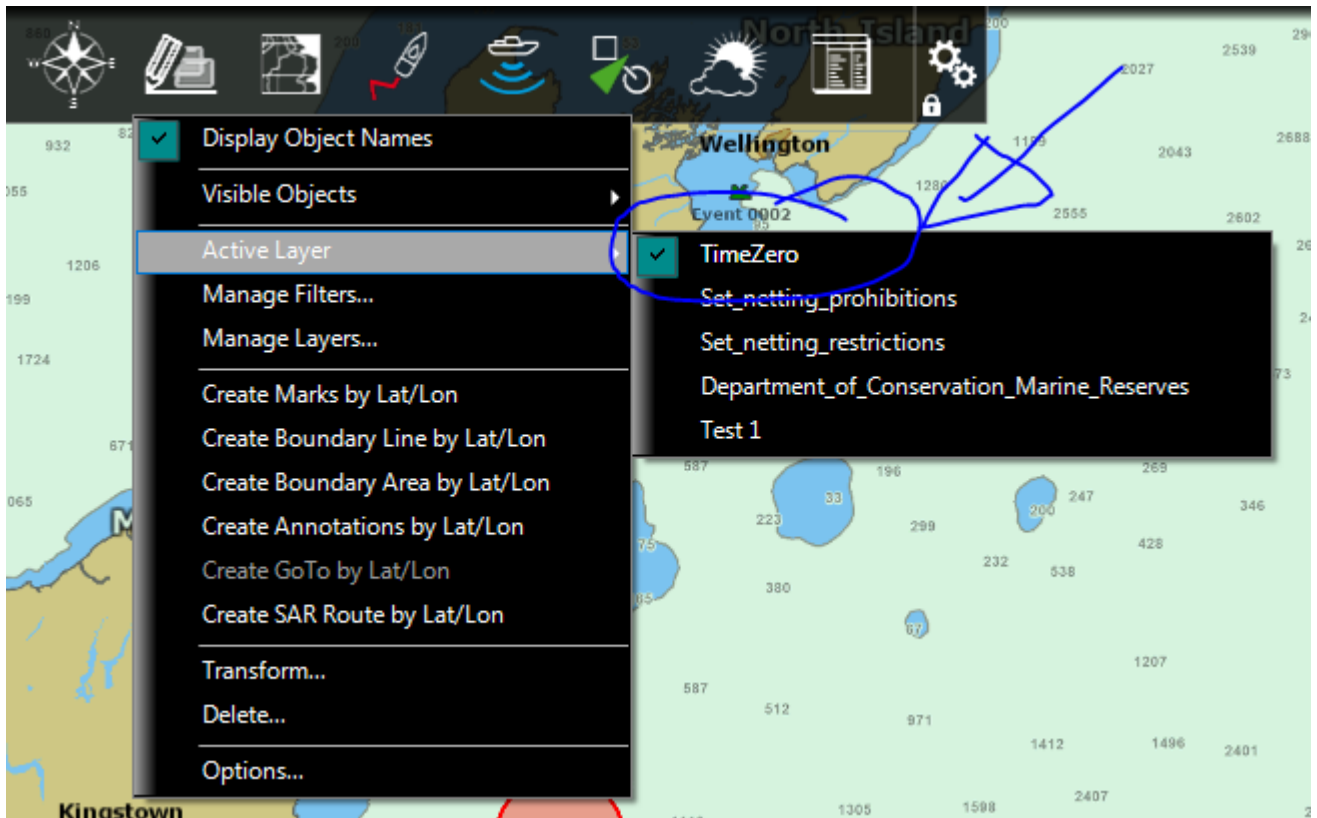
### LOGGING INTO MyTIMEZERO ON THE VESSEL

You then login shoreside on <https://cloud.mytimezero.com/> with the same login & password.

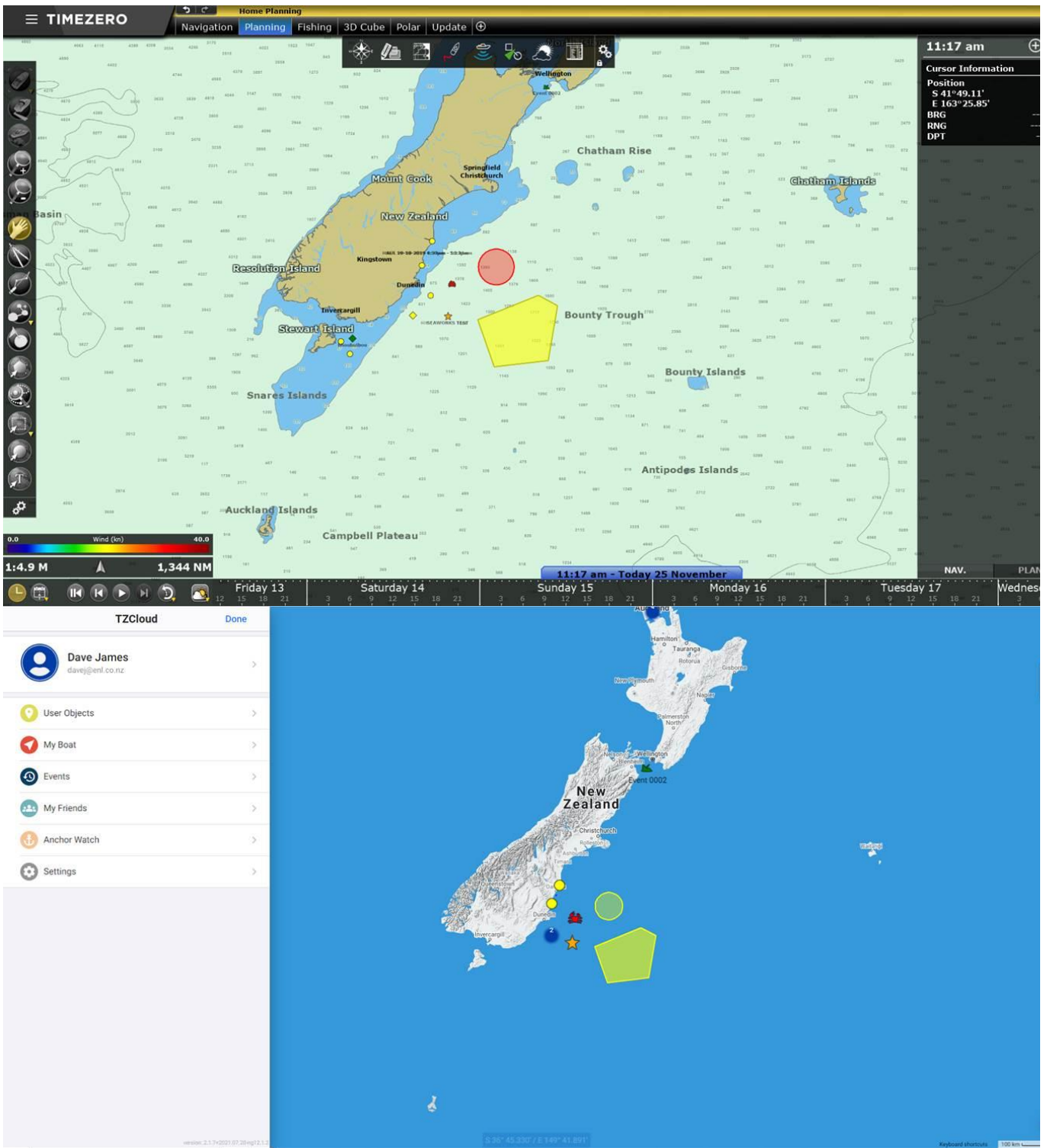
## SHARING/VIEWING DATA

Any marks, routes, boundaries etc stored in the TimeZero layer can be shared. They can also be edited shipside, or shoreside. You can create routes, marks, boundaries, boundary lines etc shoreside, so they appear on the ship system (or visa versa).

Please note: the TimeZero layer is the only layer that can be received shoreside, or edited – so the captain can still maintain their own data integrity on their other navigation/data layer/s



Below is an example of TZ Professional system (we created some sample data), and then below that you can see how the same data shows when logged into my account on <https://cloud.mytimezero.com/>



You can share marks, routes, boundaries & photos etc... You can even add a shoreside anchor watch.



## Anchor Watch

Done

Mobile phone for SMS notifications

 +1 ▾ Ex: +12015550123

TEST

Anchor Watch Notification Settings

Warning Off

Alarm By Email

Disable By SMS

Discontinue By Email & SMS

Send only one notification per type of event per 30 minutes



Number of remaining SMS

10

Useful links:

<https://mytimezero.com/tz-cloud>

Video: <https://youtu.be/7Lg0MziJEOo>