

Welcome:

Welcome to our regular snapshot of Manaiakalani teaching and learning, where we profile some of the wonderful activities underway in Manaiakalani and Manaiakalani Outreach schools across New Zealand. With Term two distance learning kicking off this week, teachers have been drawing on a wealth of tools and techniques to support their learners to learn, create and share. We hope you find lots to interest you, including ideas and approaches that can be applied with more learners. Do check out our teacher and learner blogs - feedback is always welcome.

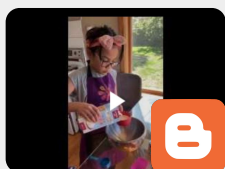
"Our Manaiakalani friends have been instrumental in providing 'just in time' learning to our teachers, in a way that is enabling confidence and precision of pastoral and learning response, to our school whānau. At the heart of Manaiakalani are the values of connecting and caring. This pandemic has amplified how embedded these values are in the practice of Manaiakalani. Our Ōtaki community of schools are exponentially more greatly positioned to support our school community due to our connection with and the caring of Manaiakalani." - **Maine Curtis, Principal, Waitohu School.**



Gary Roberts from Hornby Primary School shares his perspective on [distance learning](#) and the importance of teacher-led learning and remaining connected. [Read his blog post here](#)

Learners Learning

Students from all over the country have been sharing their learning on their blogs. Here are a few examples of what our learners have been blogging. Feel free to leave them a comment



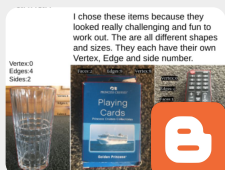
Celine from St Bernadette's School sharing her [fabulous baking](#).



Eziaz from Pt England School sharing how he created a word train with his mum as a [Fun Friday Activity](#).



Duncan from Matawai School has been busy [constructing a table](#) for storing his motocross gear.



Hannah from Marshland School has been exploring the [properties of shapes](#).

This Taemaro Bay whānau set up class in a generator powered trailer on top of the hill to get a strong wifi signal. Making Distance learning happen on the first day of Term 2.

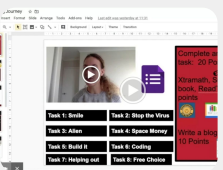


Teachers Teaching

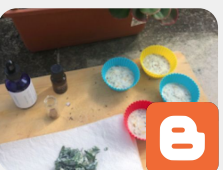
Below are some examples of how Manaiakalani teachers have been delivering exciting programmes of learning online.



Whaea Lee-Ann from Tamaki Primary School teaching Harakeke online. [Read her Blog Post here.](#)



Clarelle Carruthers from Pt. England School explains how she and her team are [leading learning from home](#).



Teachers from Te Waka Ako at Waikowhai Primary School are connecting and sharing their lockdown experiences with their learners through their [class blog](#).



St Francis of Assisi Catholic School have developed clear and visible [processes for distance learning](#). 230+ students online and connecting with teachers on day one of Term 2.

Facilitation and Professional Development

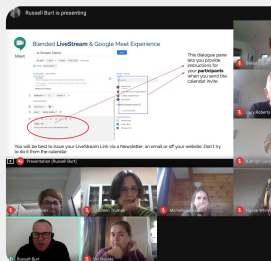
Tuhi Mai Tuhi Atu and Teacher Meets during the lockdown period have been well supported with 40+ teachers attending this week from across Manaiakalani and Outreach. [Visit this page to see what teachers have been sharing.](#)



Two [Digital Fluency Intensive Cohorts](#) have been running throughout the lockdown. 46 teachers are spread between the two groups representing all of the Outreach clusters throughout the country. [This blog post](#) from Emma Eagleson from Hay Park School provides a succinct reflection of the last session.



Our facilitation team have been supporting teachers during the holiday period. The [Tairāwhiti team](#) have been running regular toolkit sessions to prepare teachers for teaching remotely. Ongoing support has also been provided to Principals focused around the core tools used for connecting with learners and staff.

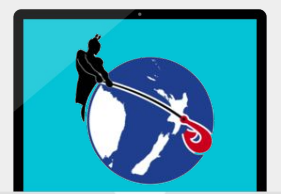


Making Learning Visible:

Our learners and educators share regularly through blogging. You can follow both feeds from the links below.



Teachers Inquire RSS Feed



Learner Blogs RSS Feed

286

Average Posts per day

4002

Total Posts in April so far

Statistics for 01/04 - 15/04 for all learners in the Manaiakalani Programme

Devices & Infrastructure:

There has been extensive work completed behind the scenes to ensure that our families and schools remain connected online and any technical support is completed promptly and efficiently. Our partners Fusion are well equipped to provide assistance with coordinating Chromebook repairs, remote teacher support, and urgent on-site school servicing (With MOE approval). They also have a student support phone line available for families.

FUSION

