

WELCOME TO SCHOOL

A guide for beginning school



St Joseph's School, Rangiora

Introduction

Starting school is one of the biggest milestones in your children's life... You will likely be experiencing a mixture of fear, anxiety and excitement. Preparation is essential to minimise the fear and anxiety and increase the excitement.

Take your time to read through the information in this booklet. Keep it somewhere safe so you can refer to it as necessary.

If you have any questions or concerns don't hesitate to be in touch with.

God Bless



Ben Gorman

PRINCIPAL

principal@sjr.nz or admin@sjr.nz

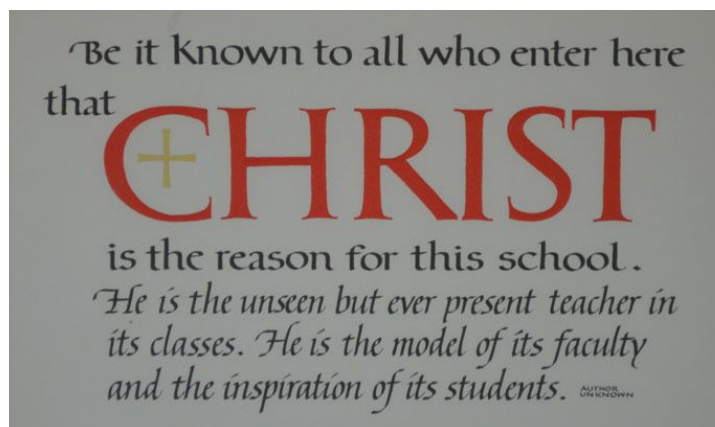


Table of Contents

Preparing for school	4
Getting the uniform sorted	5
School visits	7
What to bring (and not to bring) to school	7
The first few days	8
Attendance	8
Transport to and from school	10
Our Curriculum	11
Homework	13
Our virtues and golden tickets	14
Communication	16
Linc-Ed	17
Money, Costs and Financial Assistance	19
BYOD	22
Extra-curricular activities and groups	24
Our PTA	25
Forming Faith together	26
The Christchurch Catholic Community of Learning	27
Appendices	29
Supporting your child's learning	
Helping your children learn the key competencies	
The reading colour wheel	
Catholics schools	
The philosophy of a Catholic school	
The declaration	
Religious education whanau book *	

* a separate booklet that is an essential resource for parental engagement in the Religious Education Curriculum

Preparing for school

The first thing to consider is - will my child be ready for school at age five? It is not mandatory to attend school until your child is six years of age. If your child is not ready for school - don't start them! They will catch up quickly once they are school ready!

What does school readiness look like?

There are social, emotional and physical factors to consider.

Is your child confident without the presence of a parent. Can they talk to other adults and self manage their emotions (the majority of the time). Are they able to share, take turns talk about their day. Also, if they're not fully toilet trained (during the day) a delayed start to schooling will help decrease anxiety at school.

Academically there is no hard and fast rule. Ideally they will be able to recognise and copy out their name. Being able to count 1 to 10 and recite the alphabet is also helpful. Beyond that - that is why we have school :)

Start talking about school

About a year out from starting school it is good to discuss what school is. Visiting the school outside of school hours and play in the playground.

Children's liturgy at Sunday Mass is also a great preparation to school. Often the students who attend will be students from St Joseph's.

The Transition

Open dialogue is the most important factor for a successful transition to school. Talk to school or preschool about any anxiety or concerns. Your child's first teacher at school will talk to (and sometimes visit) your child's preschool teachers to ensure no insights are unshared. Please also share your child's preschool profile book (if you have one) with your child's school teacher.

Open communication is important! We will not decline your child's enrolment from anything we learn about your child. However, there are often services and supports available that might help your child's transition to school. The sooner we can engage these supports the better!

Getting the uniform sorted

Our school uniform is supplied by Mainland Uniforms. The main shop is in Christchurch on Wairakei Rd. Everything is listed on their website and they offer free postage on orders over \$50.

See: www.mainlanduniforms.co.nz and St Joseph's School down the left hand side.

If you are interested in second hand uniform options talk to the office. Limited amounts of second hand items are available at a modest price. However, stock levels vary.



MAKE SURE UNIFORM IS NAMED!

WE TAKE NO RESPONSIBILITY FOR YOUR CHILDREN'S UNIFORM!

Our Uniform Policy:

An underlying principle to St Joseph's uniform is: "students who look smart, think smart." Students are expected to take pride in the presentation of their uniform.

These uniform specifications were agreed and implemented two years ago. None of the old uniform items (e.g. skivvies) are now acceptable. Some points of clarification:

School shoes (Leather) are to be worn to and from school (NO EXCEPTIONS), while sneakers can be worn when playing outdoors, they are not permitted inside classrooms

- Jackets are to be worn outside only
- Only school jackets or plain navy jackets can be worn, likewise only navy scarves (no other colours)
- All boys shirts must be tucked in
- Seniors (Y7/8) girls may wear a shaped blouse "untucked", however, baggy blouses should be tucked in
- Hair of shoulder length or longer should always be tied up
- Only one pair of plain studs may be worn as earrings
- Nail polish is not permitted

SUMMER UNIFORM	
Girls	Boys
<ul style="list-style-type: none"> • Blue & white check culottes • Y1-8, White monogrammed polo shirt • Y7-8, option of white monogrammed shaped blouse • V neck jersey or cardigan (dark royal) • Black Leather Sandals or black leather shoes • White ankle socks (if wearing shoes) • Various summer headband options available, otherwise navy or blue ribbon only • Navy wide-brimmed Sunhat 	<ul style="list-style-type: none"> • Light grey cotton drill shorts • Grey monogrammed polo shirt • V neck jersey (dark royal) • Black leather sandals or black leather shoes • Grey ankle socks (if wearing shoes) • Navy wide-brimmed Sunhat
WINTER UNIFORM	
Girls	Boys
<ul style="list-style-type: none"> • Y1-8 Red & blue tartan tunic (box pleat preferred) • Y7-8, option of removing bib to wear as skirt • Y1-8 White long sleeved polo shirt • Y7-8, option of winter shaped blouse • V neck Jersey or cardigan (dark royal) • Navy knee length socks or tights • Black leather shoes • Various summer headband options available, otherwise navy or blue ribbon only <p><i>If a thermal is required, please only use white</i></p>	<ul style="list-style-type: none"> • Grey wool blend shorts • Dark grey long sleeve shirt • V neck jersey (dark royal) • Black leather shoes • Plain grey school socks <p><i>If a thermal is required, please only use navy</i></p>
GENERAL UNIFORM ITEMS	SPORTS UNIFORM (Y5-8 requirement)
<ul style="list-style-type: none"> • Navy & white monogrammed school jacket • <i>(Alternatively other plain navy or royal blue jackets are acceptable)</i> • Plain navy scarf • Plain navy beanie 	<ul style="list-style-type: none"> • Navy & White monogrammed polo shirt • Navy airmesh shorts

School Visits

About a month prior to your child's first day the school will contact you to plan three school visits. If your child is particularly anxious or you have other concerns please contact us in advance - as extra school visits may be required.

- Arrive at 8.35 in the office. You will need to "sign in" your child for health and safety purposes
- The school day begins at 8.50 a.m. Parents are welcome to stay for a while... but leaving as soon as your child is settled is in their best interest
- Students can come in mufti. If they're really keen they can wear their uniform - but it's not expected
- Bring a snack for morning tea
- Return at 11am to collect them - you'll be able to have a quick chat to the teacher to see how they're going

What to bring (and not to bring) to school

New entrant students will be provided with all their stationery on their first day of school. The cost for these need to be paid prior to starting school.

Students transferring from another school should bring the stationery they used at their previous school. The teacher will assess what else they need and these will be provided by the school office.

Year 2 to 8 students at the beginning of each year will be required to source their stationery from www.myschool.co.nz



Junior students will be provided with a reading folder in their New Entrant stationery pack. This goes back and forth from school daily containing homework, reading and parent communications.

Students need packed lunches. On Wednesdays there is the option of ordering lunches through www.lunchonline.co.nz - lunch is sourced by Pita Pit. Students are not permitted to share food.

St Joseph's is an enviroschool - this means we strongly encourage wastefree lunches. Any non-recyclable materials will come home each evening in their lunchbox. There are three filtered water fountains at school - students should have their own labelled drink bottle which can be refilled at school.

Anything else is brought to school at their own risk.

Older students may wish to bring a cellphone to school. These are not permitted to be used during the school day.



The first few days (5 Year Olds)

Be sure to arrive at school at least 10 minutes before the bell. This allows time for your child to settle before school. When 5 year olds start school - they will get fatigued quickly. School is a very tiring place! Some students will benefit from 2pm finishes for a few weeks or months. This will be negotiated as needed.

After approximately 6 weeks your child's teacher will make an appointment to meet with you. At this time they go over through some formal observations about your child's social and academic progress to date.

Attendance

There is a direct correlation between attendance and academic results. Once your child starts school - attendance is expected unless there is a very good reason.

It is a requirement under law that children, and the school is legislatively obligated to monitor and report student attendance. Here is a list of examples of justified / unjustified absences (*that reflects the Ministry of Education's attendance requirements*):

Justified Absences (acceptable)	Unjustified Absences (truancy)
<ul style="list-style-type: none">• Cultural or sporting representations at a higher level• Illness• Medical/dental appointments that aren't possibly outside of school hours• Bereavement• Exceptional Family circumstances – may include travel for special occasions (application should be made to the Principal) / may be sensitive and involve other agencies• Vehicle breakdown/bus delay/car accident/natural disaster• Citizenship Ceremony• Ballet/music/speech exam• Accident before school	<ul style="list-style-type: none">• Being an interpreter for family• Looking after ill family members• Parent's work schedule• Holiday• Birthday• Unresolvable wet clothing• Non-school cultural/sporting event• Hair appointment• Visa / passport / consulate business• Moving house• Car trouble• Going to the airport

Family Holidays

Family holidays are becoming an increasing barrier to student achievement. Section 25 31 of the The Education Act 1989 compel every school board must take all reasonable steps to make sure students attend school when it is open. The school exists to teach your children, a task that is not possible without attendance. Teachers are discouraged from setting work in advance or running catch up sessions for your children. Their absence therefore may result in gaps in their understanding.

At the same time, we are sympathetic to the reality that important events can occur necessitating travel during school terms. We strongly encourage you to carefully consider the impact of any travel on your child's learning before planning travel.

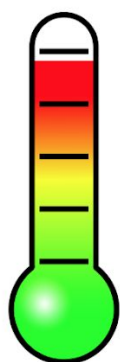
We ask, for planning purposes, that you notify the school as soon as any such holiday leave is planned. Please do this using the link on the school website: www.sjr.nz/information/leave-request

Illness

The school needs to know when your child is off sick! Please let the office know if you are keeping your child at home (see communication section).

These guidelines are useful when considering whether or not your child should come to school.

SICK CHILDREN AND SCHOOL ATTENDANCE GUIDELINES



Fever - if temperature is over 37.5 the child must stay home until the temperature is managed without paracetamol



Cold Symptoms - This can be the hardest to determine. With rest early on children can recover quickly. Sniffles can linger a long time - however, if there is regular mucus discharge that the child can't self-manage they should not be at school! Children should also stay home and rest with ongoing sore throats or severe coughs



Chickenpox or Hand, Foot & Mouth - stay home for at least 5 days. No open sores at school

Vomiting and / or diarrhea - stay home until 48hrs after symptoms disappear



Conjunctivitis - is highly contagious - stay home until 24 hrs after treatment

"If in doubt, get it checked out!"

Would you be happy if your child came home from school exposed to potentially contagious illnesses? Also - children won't learn if they're feeling unwell!



FORTITUDE



AROHA



RESPECT



Transport to and from School

Students at St Joseph's travel by a variety of means. Some things to consider.

School Parking and Drop-Offs

Carparks can be dangerous places! "Double Parking" or even just stopping in the main thoroughfare of the carpark must not occur! If you wish to drop and run please do so on the roadside. It is also important you follow the arrows and signs in the carpark.

If you are simply dropping off your child please use the 5 minutes carparks on George St. This image is provided for clarity.



Bicycles and Scooters

Many students bike and scoot to school. Bikes and scooters are stored along the Chervier Centre external wall during the school day. Bikes and scooters are not to be ridden in the carpark or school grounds. They are stored at school at the owners own risk.

Students outside of Rangiora Township

Students who live 3.2km from school are entitled to ride on the school bus or receive a modest yet handy conveyancing allowance from the Ministry of Education. To apply for the conveyancing allowance inquire at the school office. If you are interested in taking the school bus contact the "Bus Coordinator" at Rangiora High School ph. 03 311 8888.

Our Curriculum

St Joseph's School Curriculum is built upon the bones of the New Zealand Curriculum.



Key Competencies

The New Zealand Curriculum identifies five key competencies:

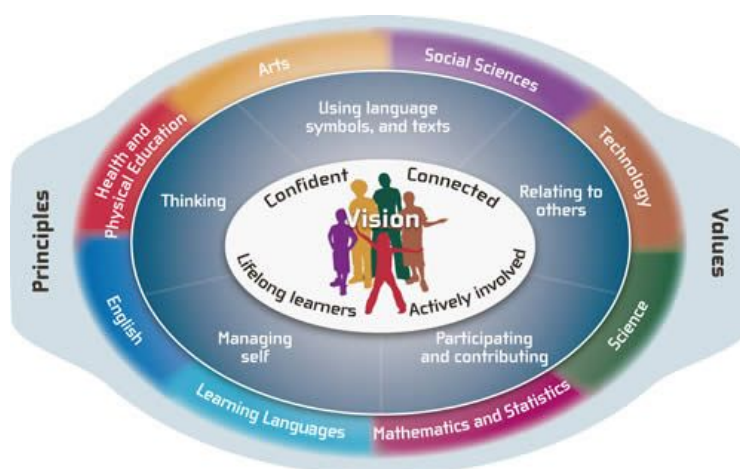
- thinking
- using language, symbols, and texts
- managing self
- relating to others
- participating and contributing

People use these competencies to live, learn, work, and contribute as active members of their communities. More complex than skills, the competencies draw also on knowledge, attitudes, and values in ways that lead to action. They are not separate or stand-alone. They are the key to learning in every learning area.

Learning Areas

The New Zealand Curriculum has 8 learning areas. As a Catholic School we consider Religious Education to be the 9th learning area.

A practical reality of a Primary School is that about 80% of the time and energy goes into the “four R’s” - Reading, Writing, Arithmetic and Religious Education. The rest of the curriculum areas are taught through our custom “Integrated Curriculum”. This table summarises our curriculum:



English	Mathematics	Religious Education	Integrated Curriculum
<input type="checkbox"/> Reading <input type="checkbox"/> Writing <input type="checkbox"/> Phonics <input type="checkbox"/> Spelling	<input type="checkbox"/> Number <input type="checkbox"/> Algebra <input type="checkbox"/> Measurement <input type="checkbox"/> Geometry <input type="checkbox"/> Statistics	<input type="checkbox"/> God, Jesus and Holy Spirit <input type="checkbox"/> Church, Sacrament and Communion of Saints <input type="checkbox"/> Liturgical Year and Prayer	<input type="checkbox"/> Science <input type="checkbox"/> Technology <input type="checkbox"/> Social Science <input type="checkbox"/> The Arts (visual, music, dance and drama) <input type="checkbox"/> Languages (Maori & Other) <input type="checkbox"/> Health and Physical Education

Homework

St Joseph's has a Meat and Veg approach to Homework.

Homework is important. It enables students to consolidate the learning that has occurred at school. This means:



Mathematics

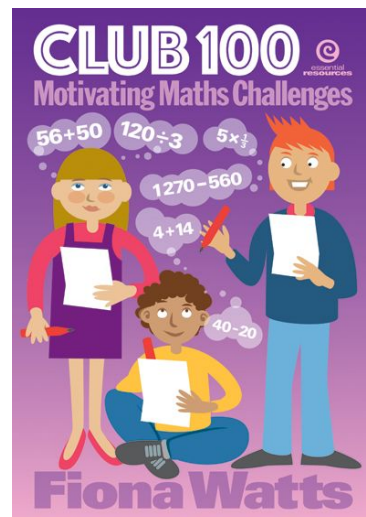
Each night students will either have 100's club (juniors) or Maths Buddy homework to complete. Juniors also have access to studyladder (an online learning site)

Reading

Students are encouraged to read every night. Juniors will have their reading books where seniors will have journals or novels. Middles and Seniors will also have a fortnightly reading log to complete online.

Occasional

Students will occasionally be asked to complete Religious Education or Inquiry work for homework.



Our Virtues and Golden Tickets

St Joseph's has made a deliberate decision to have virtues not values. The New Zealand Bishop's Conference clarified the difference between values and virtues, and the importance of Catholic School's teaching virtues in their document on the Catholic Education of School Aged Children in 2014. They stated:

The often fudged distinction between values and virtues highlights why virtues are so important in Catholic schools and why they should not be eclipsed by generalised Christian or humanitarian values:

- *Values are internalised sets of beliefs or principles of behaviour. Not all values are consonant with moral or ethical behaviour, even though they may be strongly upheld.*
- *Virtues are components of moral goodness because they stem from the nature of God. They need to be nurtured and practised so that individuals live by them, not merely believe in them. (Paragraph 70)*

Then in paragraph 72 they confirm that virtues give us the strength to do what is right (quoting from the Catechism of the Catholic Church 1803: *"A virtue is an habitual and firm disposition to do the good. It allows the person not only to perform good acts, but to give the best of him or herself. The virtuous person tends toward the good with all his or her sensory and spiritual powers; he or she pursues the good and chooses it in concrete actions."*

The three virtues of St Joseph's:

RESPECT



A respectful student will be honest, hardworking and responsible. They will be polite at all times and generous to the needs of others. They will represent the school with pride, and take pride in their own work and appearance. They will act with integrity.

AROHA



A student who shows aroha will be generous and helpful. They will be open to all and act for the good of others (with no gain for self). God is Aroha. It is Christ like and not influenced by changing societal norms. 'Love one another' is Jesus's message to us and reflects our Catholic character.

FORTITUDE



A student who practises fortitude perseveres in their commitment to do what is good and right even when it requires personal sacrifice. They will maintain focus on "the prize" and be able to achieve their goals. Fortitude is built upon courage and resilience. When life gets tough, fortitude provides the strength needed to overcome trials and adversity!

Our Virtues are Taught

Every school needs a consistent, positive approach to addressing behaviour. Positive behaviour system we use is based on the results of research into the conditions necessary for learning. This research tells us that:

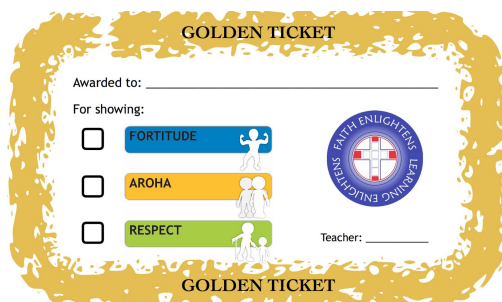
- all social behaviour, both appropriate and inappropriate, is learned
- students do not learn better ways of behaving when given aversive consequences
- to learn better ways of behaving, students must be directly taught replacement behaviours
- to retain new behaviours, students must be given specific, positive feedback and opportunities to practise in a variety of school settings.

Each fortnight we focus on a different virtue - with a specific "sub-focus" - e.g.

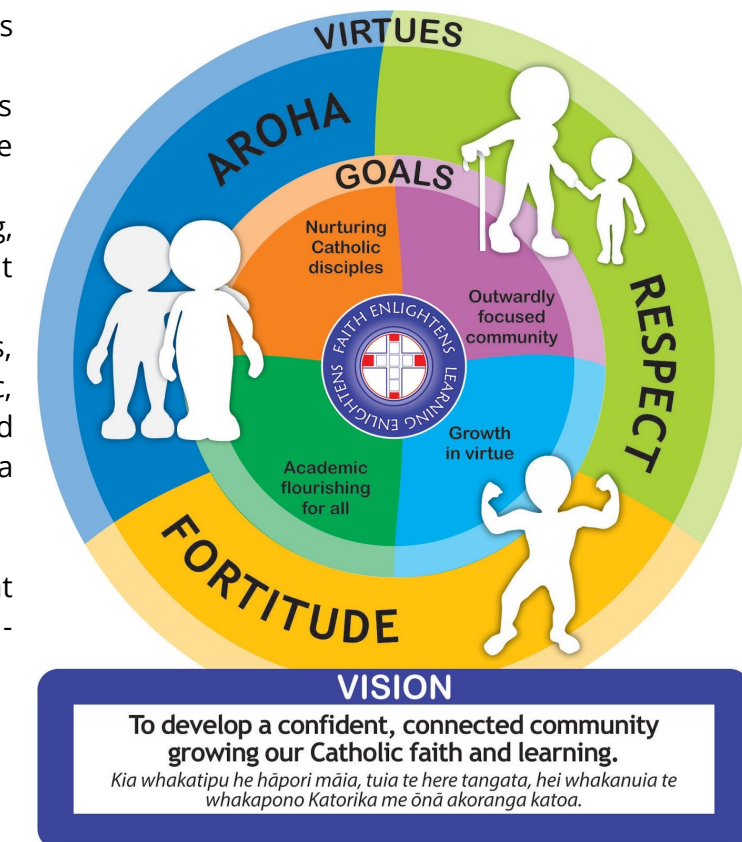
- Respect -
 - Care for our Environment
 - Mind your Manners
- Aroha -
 - Being a good friend
 - Almsgiving
- Fortitude -
 - Developing a Growth Mindset
 - Never giving up

During this time the focus is on teaching replacement positive behaviours to replace any negative behaviours.

Golden Tickets



A Golden Ticket form with a yellow border. At the top and bottom are the words "GOLDEN TICKET". The form includes a line for "Awarded to:", a line for "For showing:", and three checkboxes labeled "FORTITUDE", "AROHA", and "RESPECT". Each checkbox has a small icon of a person. To the right of the checkboxes is a circular logo with a cross and the text "FAITH ENLIGHTENS LEARNING ENLIGHTENS". Below the logo is a line for "Teacher:". The form is surrounded by a decorative yellow border.



To keep our virtues at the forefront of everyone's minds students are regularly "caught being virtuous" and awarded a Golden Ticket. Golden Tickets are given into the office each day in exchange for house points. The Golden Tickets are catalogued against each student.

Students are eligible for extra rewards after accumulating a certain number of Golden Tickets.

Communication



03 313 7828 - Ring to talk to the office, leave absentee messages, leave messages for teachers or to request an appointment with someone. When unforeseen changes occur you can also get messages sent to your children during the day. You can also text absences to: **027 326 7247**



Email - admin@sjr.nz, principal@sjr.nz - Teachers can also be contacted via email their address is "first name"@sjr.nz e.g. nicole@sjr.nz



Our school website www.sjr.nz includes a school calendar, flexibuzz news banner, previous newsletters and also an urgent notice section on the main homepage



Flexibuzz is a smartphone app that allows teachers and school administration to communicate with you via "push" messages. These messages are free for us to send, so it is a highly recommended communication tool. You can also report student absences through Flexibuzz. If you do not have a smartphone you can sign up to receive Flexibuzz messages through email - simply visit: www.flexibuzz.com.au

We're making it easier
to *bee connected* by
using FlexiBuzz to
stay in touch.

Register for FlexiBuzz on your
phone, tablet or PC to receive our
news, messages, events and other
communications.



Stay in touch with FlexiBuzz

**STEP
01**

Sign up for FlexiBuzz and then login



Search "FlexiBuzz"
in your app store.



Go to
web.flexibuzz.com
and click "Sign Up".

**STEP
02**

Connect to us



Select the 'Search' icon and type in our
name. Select us from the results.

**STEP
03**

Select your communication groups



Click the 'Add' icon beside the
communication groups that
apply to you.

**STEP
04**

Get started



Click the 'Home' icon to
view our recent posts.

For further information or assistance please visit our website
www.flexibuzz.com or email us via support@flexibuzz.com.





Facebook - This page is primarily a place to celebrate the successes of our school and students. It is a closed group, so please request permission to join. We won't bombard your wall with posts... but will provide key reminders, event invites and post photos and videos of special events.



Note - the PTA has another facebook group that you are also encouraged to join.



Learning Conferences (aka Parent Teacher Interviews) occur twice a year. Bookings for these are made through www.schoolinterviews.co.nz

Linc-Ed



Linc-Ed - The most important communication tool St Joseph's has is Linc-Ed. You will receive emails every time an entry is made on your child's learning page, and this will be used to communicate other important messages through the school week. Other key tasks like school accounts can be accessed and paid via Linc-Ed.



A new post has been added to LINC-ED:

How do you access your child's LINC-ED page?

The simplest way is to use the green button at the bottom of Linc-Ed email notification that says "Log in to your school account".

Step 1 Visit <https://sjr.linc-ed.com>

Step 2 Your username is the email address that you have previously shared with the school. Enter your email and then click 'Lost my Password'.

Step 3 An email will be sent to you containing a link for you to click on. The link will take you to a page where you can enter your own secure password.

Step 4 Enjoy reading, viewing and listening to your child's learning.

For more information on Linc-Ed watch these two videos:

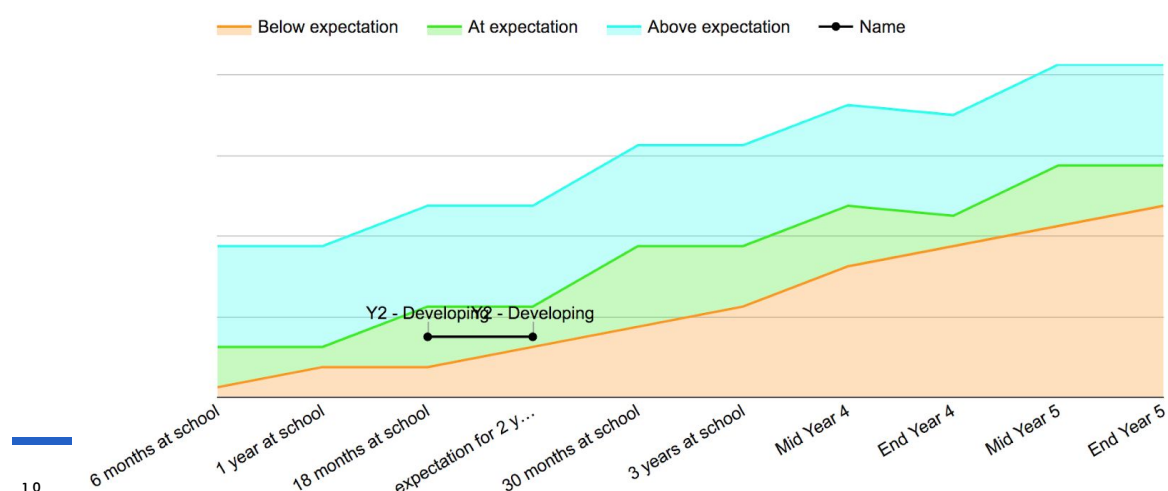
- Linc-Ed's Story - <https://www.linc-ed.com/our-story/>
- Intro to "Parent View" - <https://vimeo.com/200615390>

Learning Posts (LP) occur approximately every two weeks. Learning Posts are often accompanied by examples of students work. Learnings posts are made against:

- Reading
- Writing
- Mathematics
- Religious Education
- Integrated Curriculum
- Key Competencies

Term One					Term Two					Term Three					Term Four				
LP	LP	LP	LP	LP	LP	LP	LP	LP	LP	LP	LP	LP	LP	LP	LP	LP	LP	LP	LP
Week 2 Meet the Teacher Week 8 Learning Conference					Week 10 OTJ's in Reading, Writing and Mathematics					Week 8 Learning Conference					Week 10 OTJ's in Reading, Writing and Mathematics				

This reporting is complemented by learning conferences (parent / teacher interviews) and twice years "Overall Teacher Judgements" (OTJ's) in Reading, Writing and Mathematics. The regular learning posts, combined with the twice yearly OTJ's are in place of traditional biannual written reports. OTJ's are teachers judgements about where within the curriculum levels a student is achieving. Formal assessments, informal learning tasks and daily observations of the child all contribute to the teachers OTJ. OTJ's are reported using a cumulative graphs as seen here:



Money, Costs and Financial Assistance

Wouldn't it be great if education really was free?

However, the school has to function with constrained resources and still strive to provide the best quality education for your child!

Your family has a school account which is recorded and managed via Linc-Ed. We request that all school accounts are cleared prior to the end of each school year. Each term school accounts are emailed out. There are a two main ways in which we can accept your payment:

1. Automatic payments or bank transfer

This is our most preferred method. As there are no costs, fees or waiting times. Our new bank account details are:

St Joseph's School (Rangiora)
ASB - 12-3616-0055388-00

We encourage every family to consider setting up automatic payments at the beginning of each year which will clear your child's account by the end of the school year.

2. Payment directly to office

The office accepts payment by cash, cheque, eftpos and credit card.

Some of the costs explained

1. Attendance Dues

Attendance dues are not a donation. Attendance dues are collected by the Parish on behalf of the Proprietor (the Bishop). All parents are legislatively responsible to pay attendance dues. These dues are the only means the diocese has to repay loans, insure buildings and develop school properties. This is because the school buildings and sites are owned by the diocese and not the government. The government can not put state funds to increase the value of Church owned assets. The funding we get from the government covers wages, utilities, consumables and maintenance. Not capital improvements.

Sadly - as a result of the earthquakes, insurance prices mean attendance dues are increasing each year. However, note that the Diocese of Christchurch still has the lowest attendance dues in the country (by a considerable margin).

Attendance due rates for the next two years:

- 2019 - \$280 p.a. + \$40 Special Character Contribution
- 2020 - \$330 p.a. + \$40 Special Character Contribution

Attendance Dues are charged termly by the Parish Office and must be paid directly to them. The school can not accept payment of attendance dues!

2. Activity Donation

The activity donation is a one off fee that prevent the school from having to charge for different activities. From this income the school pays for activities such as:

- Visiting Presenters
- Education Outside the Classroom (like trips to Antarctic Centre, Hanmer or Skiing)
- Buses to sports and other cultural events
- Swimming lessons

School camps and Year 7/8 Technology are the two main things not covered by this donation. The activity donation has remained unchanged for many years... with increased costs this may need to be reviewed in the future. Many schools run this with a user pays philosophy, this would result in students having to pay smaller amounts prior to every event. The activity donation method is much easier to manage (plus it is tax deductible).

3. School Fundraising

Fundraising at St Joseph's fits into three main categories:

a) PTA fundraising to support the school

Each year the PTA fund-raises thousands of dollars to support the school. This is complemented by successful grant applications which the PTA undertakes on behalf of the school. The PTA has supported the school with the acquisition of new technology, playgrounds, landscaping, textbooks and other classroom resources and has recently ordered new Kapa Haka uniforms

b) School Camp Fundraising

Every two years the Year 7/8's have a large scale trip to Wellington. Without fundraising this would cost nearly \$1000 per student. Most years, with fundraising, this amount is reduced to around \$300 per student (much more manageable).

c) Charitable fundraising or donations

The Young Vinnies group is the main driver of this at St Joseph's. As a Catholic School we have the responsibility to work for the common good of society on all. In Term 1 we participate in the Caritas Challenge. Other terms may be simple mufti days or other events intended to raise funds or gather donations to support different charitable works. In 2018 we have developed a relationship with St Peter Chanel Primary School in Apia, Samoa. We will be finding many different ways to raise funds to support this school over the coming years.

4. Sundries

Other than those listed above the other things that you may find on your school accounts include (but are not limited to):

- RE Donation - \$5.82 - To fund the development of our RE Curriculum
- School Stationery - \$ varies - You will be charged per replacement item that is required for your student. New Entrant's also have their stationery provided by

the school. At the beginning of each year you order and pay for your child's stationery from Officemax (unless you are a new entrant)

- School Hats - \$12 - These are the only items of school uniform we stock. The rest must be purchased from www.mainlanduniforms.co.nz (or their store in Chch)
- Maths Buddy - \$26 - This is an online tool to support your child's maths
- Year 7/8 Technology - \$ varies - This is charged by Rangiora Borough and results from the take home components to the curriculum studied e.g. food, wood etc...

Financial Assistance

Raising a family in New Zealand in the 21st century has many challenges. St Joseph's School exists to support you in developing your children into the leaders of the future. It is not fair that educational experiences for any children are compromised as a result of the financial strength of their parents. With that in mind - if at anytime you are struggling financially please don't hesitate to confidentially contact the Principal. Often (not always) there will be alternative options available to offer support.

Also remember that some things we ask for payment for are classified as donations. This means that one third of these donations can be refunded each year by the IRD. While you can collect these refunds yourself directly from IRD, there are also organisations like www.schoolrebates.co.nz that can assist with this progress.



Helping Kiwi parents reduce
the cost of education

Every year thousands of parents don't claim back their school donations -
you can now easily claim these back online at www.schoolrebates.co.nz

TIME IS TICKING TO MAKE A CLAIM

as the IRD close another tax year on the 31st of March every year

MAKE EDUCATION CHEAPER

by getting cash back in your pocket - if you've never claimed you can claim back 4 years
No dealing with IRD

CLAIMING IS QUICK AND EASY

and with your schools support they will provide us copies of missing receipts

1. Enter your details at Schoolrebates.co.nz
2. Request missing receipts from your school(s) via our website
3. We'll do the rest and let you know when to check your bank account

Already have receipts?
You can upload these as part of your claim



@SchoolRebates

Help other Kiwi families by sharing this with them

BYOD - Bring Your Own Device

St Joseph's has BYOD for all Year 6 - 8 students. The school / BOT will endeavor to provide devices for those students who can't provide their own. However, this will only be possible with a 70% or higher take up rate of BYOD.

Minimum Device Specifications	Recommended Device Specifications
<ul style="list-style-type: none">• Dual Core Processor• 2 GB Ram• 32 GB Hard Drive• 9.7"	<ul style="list-style-type: none">• Quad Core Processor• 4 GB Ram• 64 GB recommended - SSD• 12" or larger

- ❖ Laptops, iPads and Tablets are all acceptable - using any operating system
- ❖ Full sized keyboard should be supplied for iPads / Tablets
- ❖ Students should have their own (named) set of headphones or earbuds

Before use "Warrant of Fitness"

To ensure that students are bringing in devices that will aid and not hinder their learning it has been recommended we get our technician to complete a quick check of student devices. Checking the specifications, speed, virus check and that the harddrive is free of inappropriate material e.g. pirated movies, inappropriate images or videos etc... At this step the technician will also connect the device to the school network and install appropriate printer drivers.

School Wifi Only

Students will not be permitted to have devices that can directly connect to the internet (e.g. via a mobile network). Students will also be prohibited from using USB flashdrives. As these can be used to introduce viruses and also share inappropriate files, images or videos. Students will not connect to the school server - rather directly link filtered internet via our wireless system. Students who have mobile phones are required to hand these to their classroom teacher at the beginning of the day at which point they will be locked away (to avoid "hotspotting").



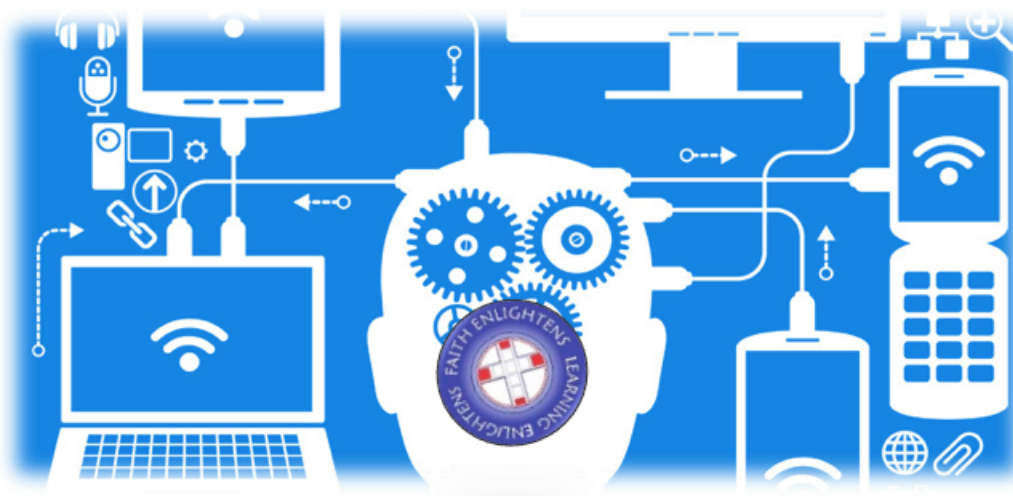
Google Docs/Hapara and Gmail

The school will roll out our “Hapara Dashboard” to our Y4 - 8 classes. Hapara dashboard links in with Google Drive to allow teachers to share files and information directly with students. It also has the ability to monitor students' screens... so all computers working in a given class can be monitored by the teacher from one central computer.

Hapara also means that our students don't need to have Gmail. Students with Google accounts in 2017 will have the email tool turned off within the Google Admin console. This is in recognition that having an email address is actually a huge responsibility and also a huge liability. Personal email addresses mean students can access a world of things online that they don't really need. They will still have the ability to use the other Google Apps for Education like: Google - Docs, Sheets, Slides, Sites and Blogger.

Device Safety

- Student owned devices should not stay at school overnight, they should be transported in suitable secure cases/bags and are done so at the owner's risk.
- Parents are encouraged to consider accidental damage cover when purchasing devices (most BYOD suppliers provide this)
- School owned devices must stay at school overnight
- Students are not permitted to use their devices during break times (they should be outside and active)
- During break times both school and student owned devices must be left in the classroom and the classroom must be locked whenever a teacher is not present
- Overnight, school owned devices will be in locked charging cabinets
- Classrooms with BYOD to have simple security cameras installed as an extra deterrent to theft



Responsible Use Agreement

At the beginning of the year before they are allowed to use their own (or borrowed device) they must complete this and have it signed by a parent. There will be some specific teaching linked with this document.

Extra-Curricular Activities and Groups

There are many different opportunities... some are seasonal, some are one-off opportunities and some are ongoing. Some are organised externally of school and some are organised by the school. Here are details of some of the Extra-Curricular opportunities at St Joseph's School.

Sporting

- Netball - T2 & 3 for Year 3+ competing for the school in NC competition
- Basketball - T1 & 4 for Year 4+ competing in the NC competition
- Football - T1 & 4 - Twilight for all age levels (depending on interest)
- Canterbury Primary School Sport competitions in a variety of fields - including the staples of Swimming, Athletics and Cross Country

The Arts

- Private (user pays) music lessons are offered by two specialists - these occur at school during school time. There is piano teacher and a band tutor (teaching guitar, drums, bass etc.)
- There are a variety of school choirs that run during lunchtimes and perform at a variety of community and school events
- Ukulele group - free group run during lunchtimes
- Every two years we have a major school musical - main parts are by audition for senior students. All students are involved in some way.

Cultural

- Kapa Haka

Academic

- Cantamaths - inter school Math competition (Y6+)
- EPro8 - STEAM challenges for student (Y6+)
- Code Club

Service Oriented

- Student Librarians
- Young Vinnies
- Enviro Group
- Physical Activity Leaders (and the activities they take at school)



Our PTA

St Joseph's School PTA is a group of parents committed to creating a positive community spirit within the school and to provide resources and / or funds to enhance the learning environment of the children. The PTA has a very positive relationship with the staff and BOT and provide support to school events.

The activities of the PTA centre on fundraising for the school, pastoral care and organizing social events for the children. These include but are not limited to:

- Sausage Sizzles
- School Discos
- Quiz Nights
- School Fair
- Entertainment Books
- Calendar Art
- Summer picnics
- Lunch online



All parents are part of the PTA and we welcome parents to come and join us at meetings and get involved as much or little as your time allows. Being a small school we have less parent resources than many schools and we really do appreciate and need help from the whole school community at times.

All funds raised through PTA organised events are used to benefit the children. In recent years PTA funds have been used to:

- Extensive landscaping throughout the school
 - including playground extension
 - decking and planter box seating areas
 - tunnel house and raised vegetable beds
- Interactive whiteboards for classrooms.
- Ergonomic chairs for classrooms.
- Numeracy and Literacy resources.

Like us on Facebook! Join our page to get updates on forthcoming events and other information. <https://www.facebook.com/stjosephsrangiorapta/>



Forming Faith Together

Every new family is expected to attend the Forming Faith Together evening.

At this meeting we will consider the inter-relationship between school, parish and family. Each has its unique responsibilities, but together we can support each other so that our children may truly achieve the potential given them by God.

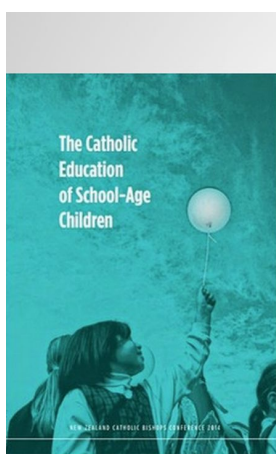
In these changing times, we know that it is so important for our children to be nurtured with strong values and a deep sense of their own dignity and purpose in life. In our wider community, that responsibility is often left to the parents of each child. In our Catholic tradition we know that "it takes a village to raise a child". Of course parents are the first and most important teachers of their children. However, parents need and deserve the support of our wider community in their task of forming well-rounded young people who know they are loved by God, and who are equipped to live the faith they have received.




By enrolling your child at St Joseph's you have committed to working with the school and parish to nurture your child's faith. This means you will need to be prepared to:

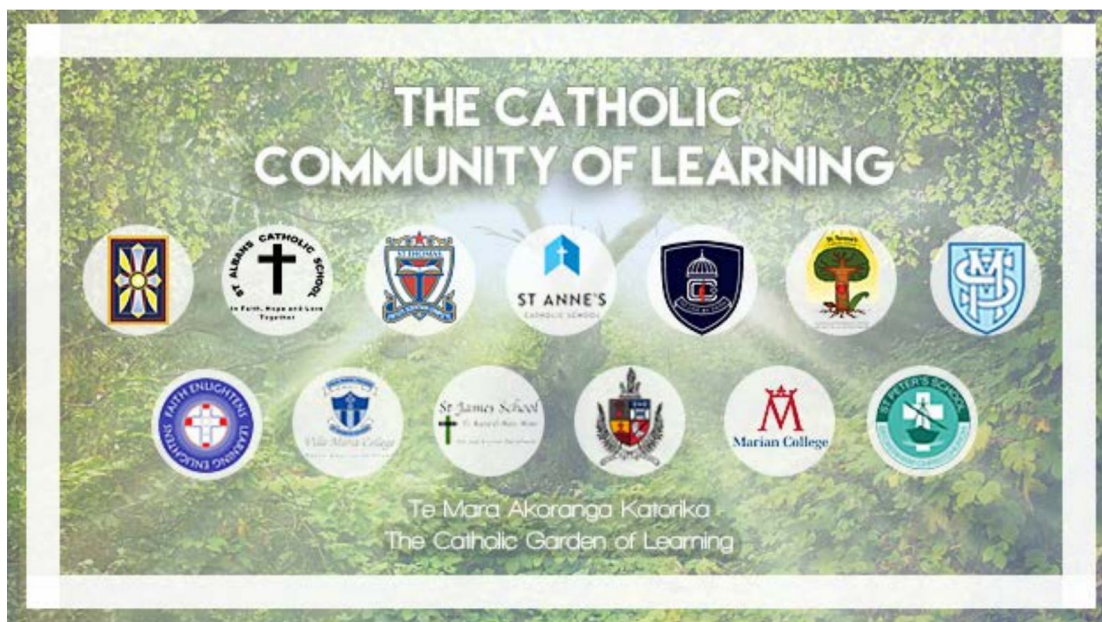
- Discuss RE learning at home
- Pray with your children
- Attend School Masses in the Parish
- Support your child's preparation should they choose to receive the sacraments

If any of this scares you - you may wish to consider a different school.



The Catholic school is first and foremost “a place to encounter the living God who in Jesus Christ reveals his transforming love and truth.” Its primary goal is “above all a question of communicating Christ, of helping to form Christ in the lives of others”.  That is the goal against which the effectiveness of Catholic schools must be assessed, because it is the reason for their existence (Dew, Dunn, Browne, Campbell, Jones, Drennan & Cullinane, 2014, p.8).

The Christchurch Catholic Community of Learning



St Joseph's is a proud and enthusiastic member of the Christchurch Catholic Community of Learning. One of the core philosophies of communities of learning is to provide links between institutions to create a more seem-less educational pathway for each child. It is with this in mind that St Joseph's has joined the Christchurch Catholic Community of Learning. Approximately 85% of our students progress to one of:

- St Bede's College
- St Thomas of Canterbury College
- Marian College
- Villa Maria College

Communities of Learning gather around a shared vision and collaborate to met set achievement challenges.

VISION:

"We are a Community of Learning in which our ākonga encounter Christ and excel in their learning."

How the CoL's Achievement Challenges are being met (current for 2018)

- **Science**

Through a focus on Science Capabilities, we will be increasing teachers' knowledge and understanding of the Nature of Science strand in the Curriculum. Through the data that we will gather with all schools using the Thinking with Evidence tool we will tailor professional development to meet the individual needs of schools and teachers to develop their confidence and ability to record progress and achievement against the Curriculum objectives.

- **Literacy and Mathematics**

Through PLD on the Learning Progressions Framework, we have identified the need to build capability to make reliable judgements across all curriculum areas, for children, parents, whanau and teachers to understand learning progress. Through using The Ministry's Progress and Consistency Tool, teachers and schools will increase their understanding of students' progress and will be able to plan targeted teaching programmes.

- **Wellbeing / Transitions / Cultural Responsiveness**

Through collecting well-being data across all 15 schools in the Kāhui Ako we will identify areas where we can strengthen each schools' ability to create learning environments which are positive, conducive for deep learning, and enabling all students to achieve to their potential. We will use Me and My School from NZCER to gather this data.

- **Special Character**

Through an application to the Teacher Led Innovation Fund, we will develop an inquiry into how students can be empowered to lead change, through combining aspects of Health Promoting School processes and the See, Think, Judge model of Catholic Social Teachings. The goal is to improve well-being and learner engagement in a culturally responsive way

You will notice numerous mentions of the CoL achievement challenges and professional learning and development within our strategic goals and achievement targets.

For more information on the CoL - visit www.catholiccol.org.nz

Appendices

Supporting your child's learning
Helping your children learn the key competencies
The reading colour wheel
Catholics schools
The philosophy of a Catholic school
The declaration
Religious Education Whanau Book*

* separate booklet