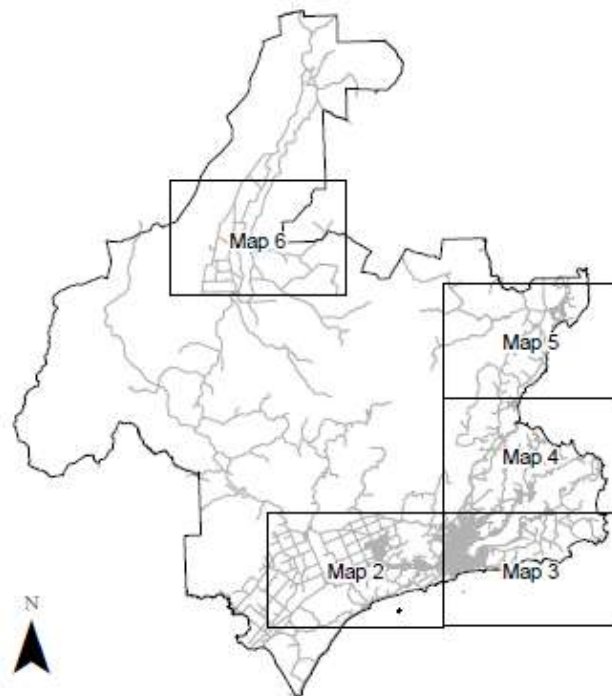
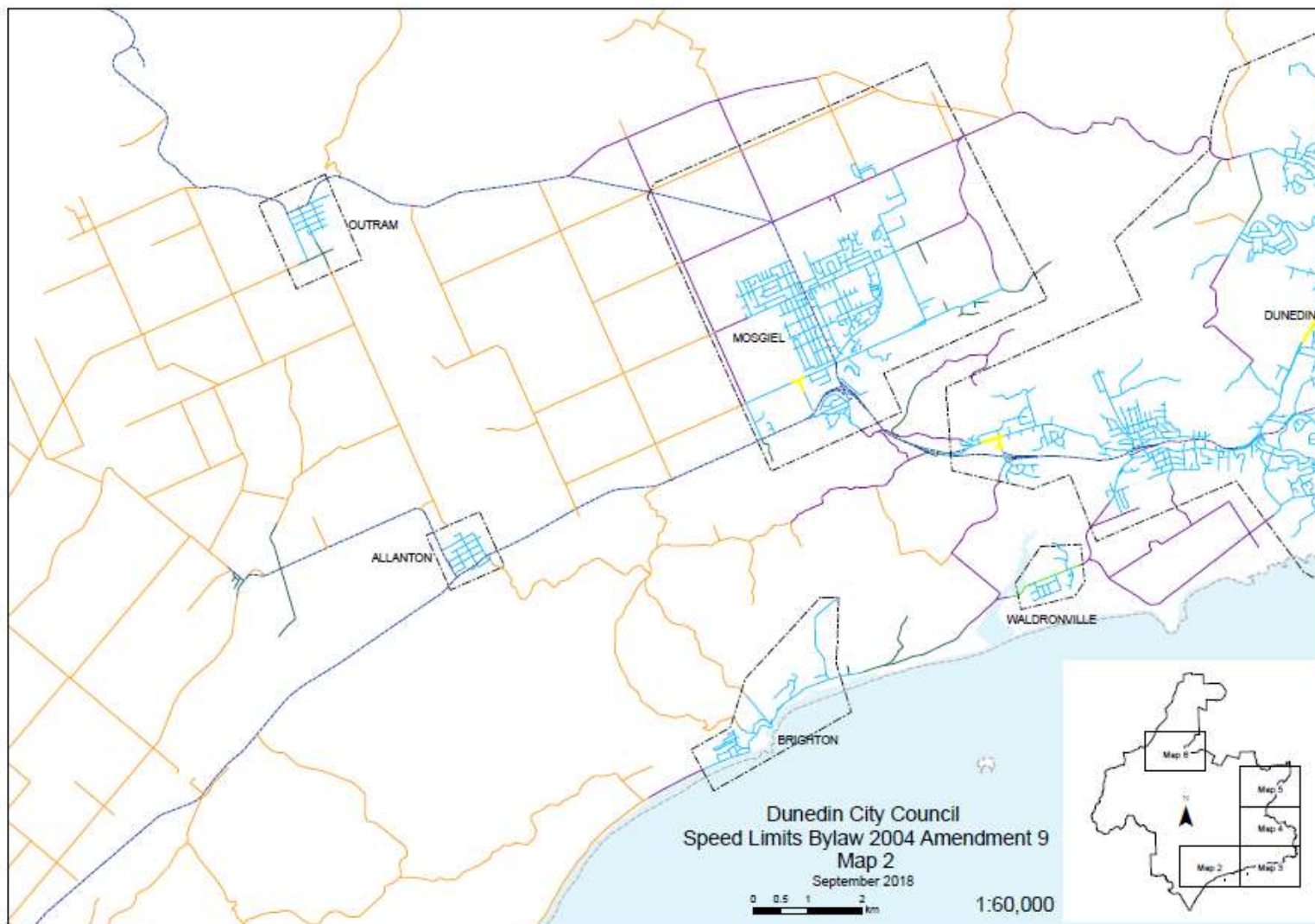


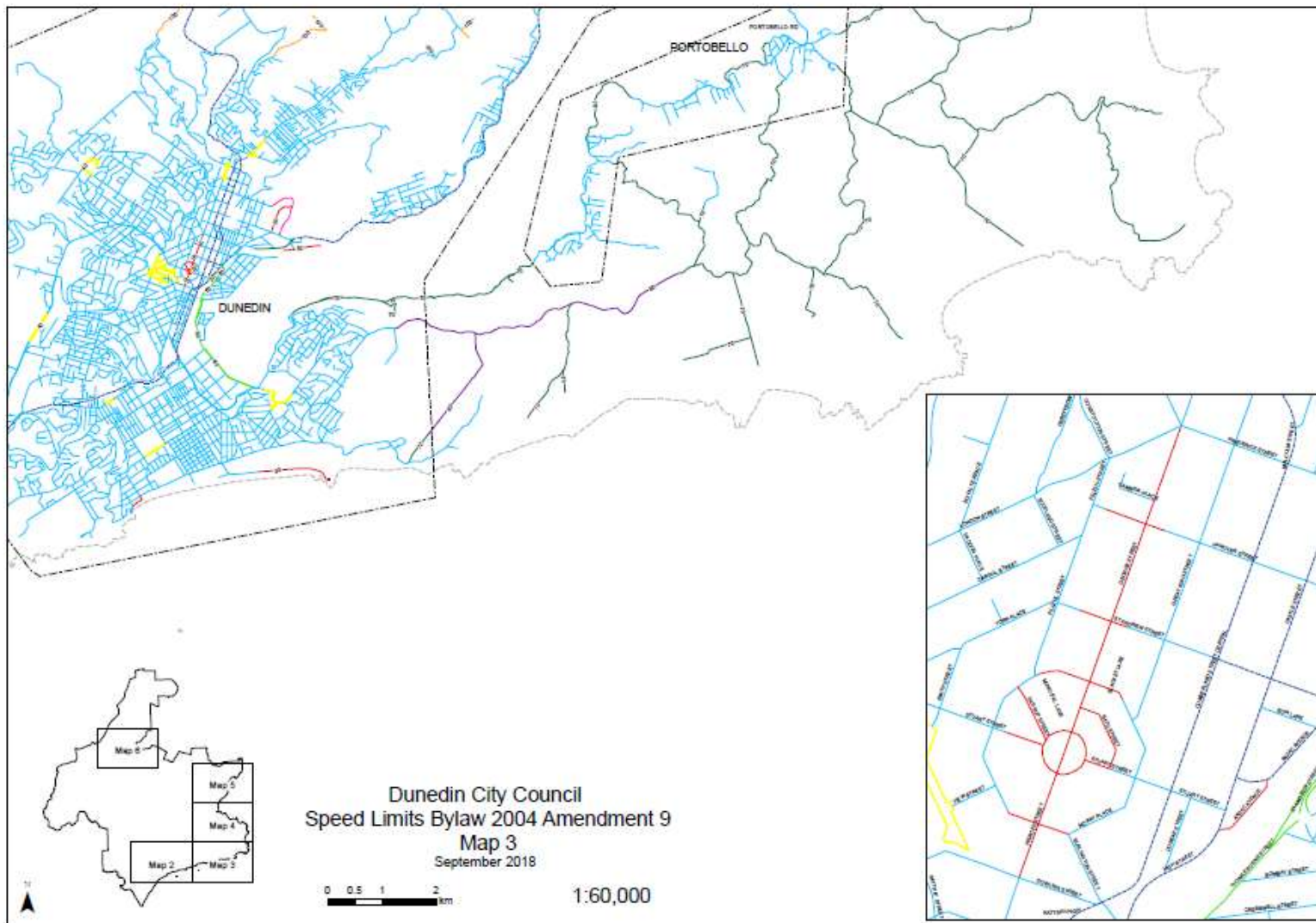
Dunedin City Council Speed Limits Bylaw 2004 Amendment 9 Map 1 September 2018



Legend

- Boundary of urban traffic area that has a speed limit of 50 km/h, except for roads marked with a different speed
- State Highways which are excluded from this bylaw
- Roads that have a speed limit of 20 km/h
- Roads that have a speed limit of 30 km/h
- Roads that have a speed limit of 40 km/h
- Roads that have a speed limit of 50 km/h
- Roads that have a speed limit of 60 km/h
- Roads that have a speed limit of 70 km/h
- Roads that have a speed limit of 80 km/h
- Roads that have a speed limit of 100 km/h
- Roads that have a variable speed limit
- DCC Territory**
 - Dunedin City Council TLA Boundary





Dunedin City Council
Speed Limits Bylaw 2004 Amendment 9
Map 4
September 2018

0 1 2 4 km 1:60,000

