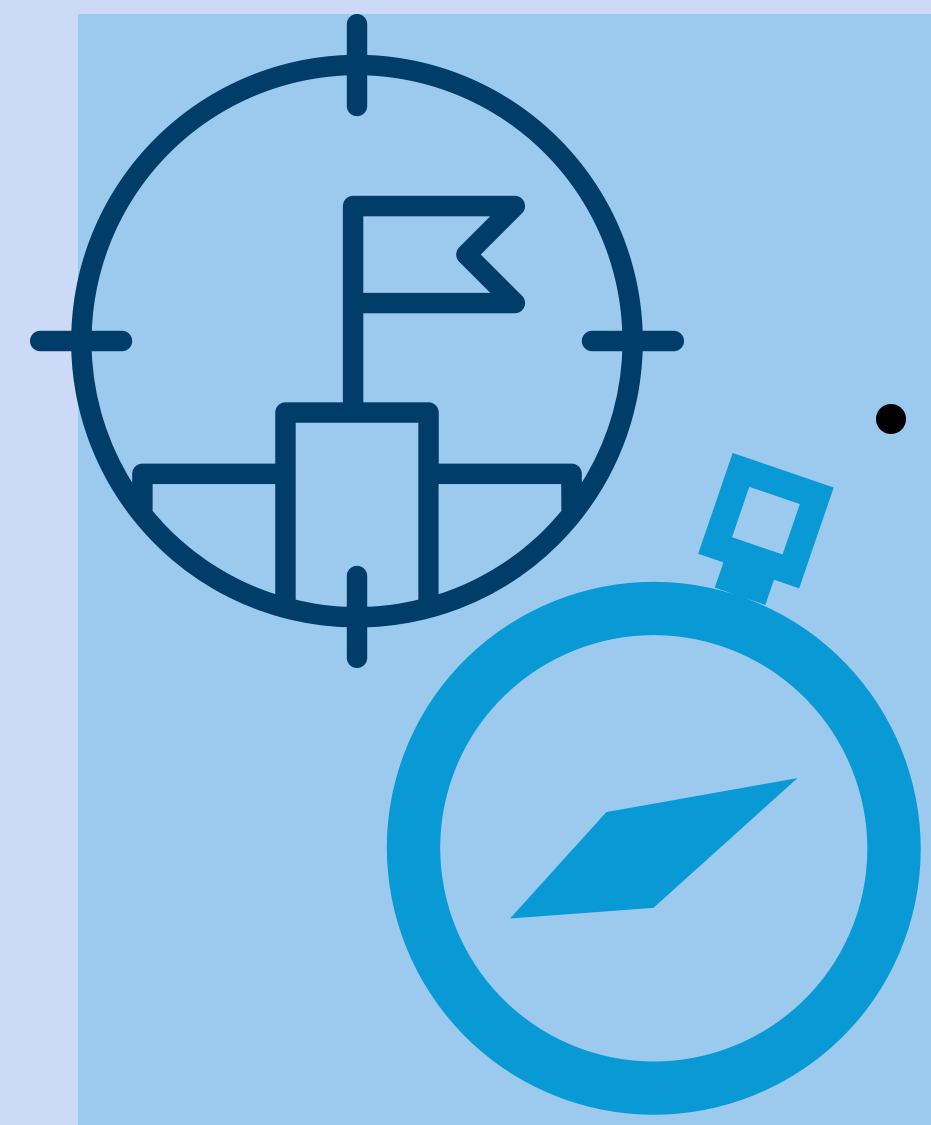




End of Year Achievement 2022



Navigating challenges

- Term 3 & 4 2021- over half of the time we were in a series of lockdowns, and attendance was very low when school was 'open'.
- Term 1 - 4 over 300 staff and student COVID cases (at one stage our roll dropped to 90 students when whole classes were needing to isolate). Onsite attendance was often very low, including absences with other illnesses.

Focusing on the positives

Given the massive impact of the last year (and indeed right back to March 2020), we are encouraged to see our student achievement levels not impacted as greatly as anticipated.



We would like to acknowledge the support of our whānau during these challenging times and pay credit to your roles as supporting educators while children were at home.

We believe our priority focus on maintaining student wellbeing first and foremost during this challenging period has ensured that achievement has not been as greatly impacted as it may have been.



Priorities for 2023

Since our school opened we have grown from 100 students to nearly 450. Our staff have grown from 15 to 48. This requires careful planning and prioritising to sustain the support for our learners.

- An extensive learning support team including a large increase in Board funded Inclusive Learning Assistant (ILA) time.
- An increase in English Language Learning ILA time.
- Significant commitment to ongoing professional development for staff
- Maintain our school values of curiosity, collaboration, creativity, community mindedness and confidence in our learning programmes.



Increased support for learners

The Board of Trustees continues to invest heavily in resourcing, professional learning and personnel support.

The Board currently spend over \$380,000 on inclusive learning support, compared to Govt funding of less than half this amount. This demonstrates our commitment to supporting our tamariki.

