

Have your say

Hearing your views and experiences will help us make our district more welcoming for everyone.

Please tell us what it is like for newcomers to settle into this community.

Visit waimakariri.govt.nz/letstalk to learn more or scan here:



Timeline

Waimakariri District Council has received Government funding from the Ministry of Business, Innovation and Employment to implement this programme. It will be rolled out over three years following the below process.

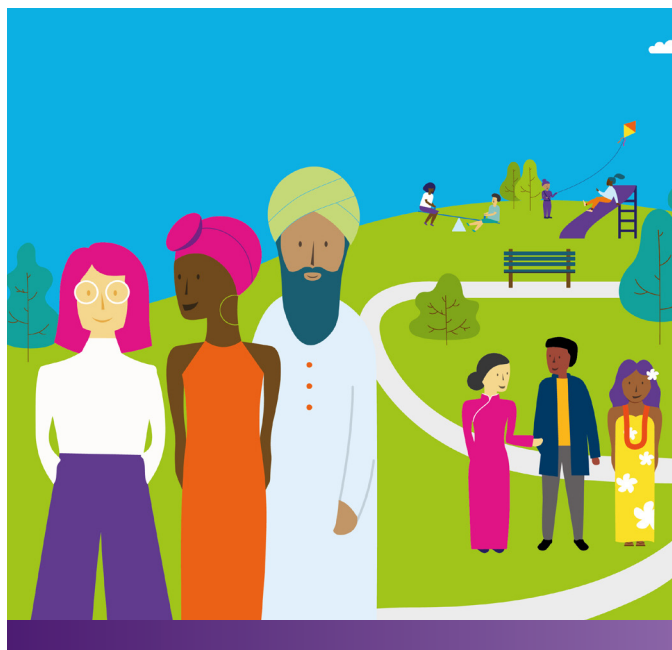


Waimakariri District Council is proud to join 35 other councils to be part of Welcoming Communities. This is a programme led by Immigration New Zealand that supports newcomers to feel included and have a sense of belonging in the economic, civic, cultural and social life of their new community.

Our district is growing rapidly with 1,600 new people moving here every year from outside the district, across New Zealand and overseas.

We want everyone to feel welcome here and create a diverse and vibrant Waimakariri.

Let's make Waimakariri a place that everyone is proud to call home.



Welcoming Communities Waimakariri





The value of a Welcoming Community

Ensuring everyone feels included and has a sense of belonging is vital for building a strong and resilient community. Communities that make newcomers feel welcome are also likely to enjoy better social outcomes and stronger economic growth.

Who are the newcomers?

Newcomers can be new community members from overseas (recent migrants, former refugees, international students and returning citizens) and people relocating from other parts of the country or moving here from nearby districts and cities.

I'm new to Waimakariri, how can this programme help me?

The Welcoming Communities Plan that will be developed provides the Council with a roadmap to guide our planning and policy with migrants and newcomers in mind. There will be many activities and initiatives that will support new people, such as yourself, to settle into our community.

Key Elements



The Welcoming Communities Plan will be guided by the 8 key elements in the graphic above. An advisory group of community representatives will work alongside the Welcoming Communities Facilitator to help develop the plan. We want to hear about your experiences to make the best plan for a welcoming Waimakariri.



Contact us

Get in touch with our Welcoming Communities Coordinator to find out more and get involved!

Aimee Claassens

Welcoming Communities Coordinator
Waimakariri District Council

Phone: 0800 965 468

Email: aimee.claassens@wmk.govt.nz



**MINISTRY OF BUSINESS,
INNOVATION & EMPLOYMENT**
HĀKINA WHAKATUTUKI

New Zealand Government

Welcoming Communities New Zealand is a government initiative led by the Ministry of Business, Innovation and Employment, in partnership with the Department of Internal Affairs (including the Office of Ethnic Communities) and the New Zealand Human Rights Commission.