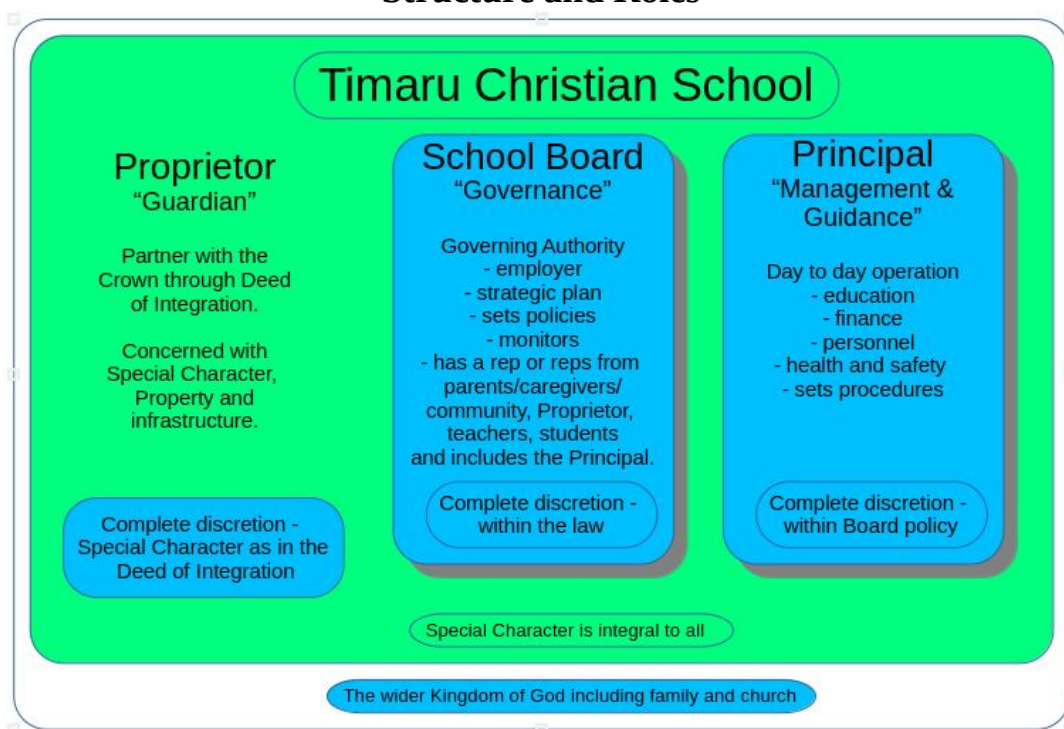


Timaru Christian School

Structure and Roles



TCS structure and roles (based on a diagram supplied by Andy van Ameyde)

To explain the above diagram:

Our Proprietor (North Haven Limited – Bryan and Sharon Rapsey) are responsible for:

- the Special Character
- property and associated infrastructure.

Some funding for this is provided via the Government and from attendance dues (which are compulsory in an integrated school). Being integrated into the State system means that TCS is a State School with the above listed differences. The Proprietor was responsible (with the assistance of the Timaru Christian Schools Trust) for the original formation of the Special Character. The Proprietor is also ultimately responsible for the on-going maintenance of the Special Character. The responsibilities and the privileges of the Proprietor are set in the Integration Deed with the Crown.

The School Board role is a Crown entity that is responsible for the governance and management of the school. Being responsible for the management does not mean implementing management decisions – that is the role of the Principal. The Board sets direction (e.g. how does our Special Character impact on the way that the New Zealand Curriculum is delivered in TCS?). The Board also monitors outcomes and performs regular audits in the school. Apart from above, the Board’s main role is to support the Principal (after all the Principal was employed by the Board). There is a strong connection to the Proprietor through the Proprietor’s Representatives. The Board is constrained by the Education and Training Act, 2020.

The Principal is the “CEO” of the school responsible for the day to day operation of the school implementing the Board’s policies many of which will be defined by school developed procedures. There is a strong connection back to the Board since the Principal is a member of the Board.

It is vitally important that the Special Character of the School as detailed in the Integration Deed is integral to everything the school does as anyone, on any day, in every way. The Special Character detailing our flavour of Christian Education is why we are here.