



Pareawa Banks Avenue School

Living And Learning With **HEART**

NEWSLETTER 26
Te pānui o te kura o
Pareawa Banks
Avenue School
21 August 2024

Bienvenidos, karibu, maligayang pagdating, welkom, haere mai

FROM THE PRINCIPAL

Te pū kāea a te Tumuaki

Malo e leilei

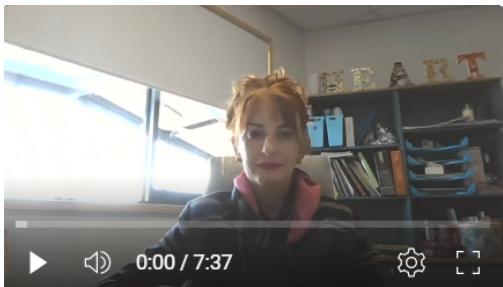
This week, we proudly celebrate Tongan Language Week, an opportunity to embrace and honour the rich linguistic and cultural heritage of the Tongan community. Known as "Uike Kātoanga'i 'o e Lea Faka-Tonga," this week encourages us all to explore and appreciate the beauty of the Tongan language, its traditions, and its significance in preserving cultural identity.

Whether you are a native speaker or new to the language, let's take this time to learn, share, and connect with the vibrant Tongan culture. Mālō 'aupito! (Thank you very much!)

Principal Reflection on journey into Teaching and Leadership

In the clip below I reflect on my years at Central New Brighton School as Principal (2012-2014).

<https://youtu.be/IHdwwS0g2-s>



Part 5 - 2012-2014



Protesting against school closures

IMPORTANT DATES

Mark your calendar

TERM 3

Week 5

Friday 23 August

Windsorcare: Kōtukutuku Rua

Week 6

Monday 26 August

New Entrant Cohort 6 start

Wednesday 28 August

Cricket Lesson: Poataniwha Tahī

Thursday 29 August

Heritage School Photos

Board Meeting 6:15pm

Friday 30 August

PTA Fathers Day Pizza Lunch

Week 7

Wednesday 4 September

Children's University On Campus

Experience: Canterbury Uni

Thursday 5 September

Canterbury Winter Tournament

Friday 6 September

Whole School Assembly 2:15pm

Week 8

Thursday 12 September

2:00-3:00pm in the Hall

Farewell assembly for Toni

Week 10

Monday 23 September

Toni's last day: Non-Uniform Day

(donations for the PTA for the

Spring Fair at Avebury House)

TERM 4

Monday 14 October

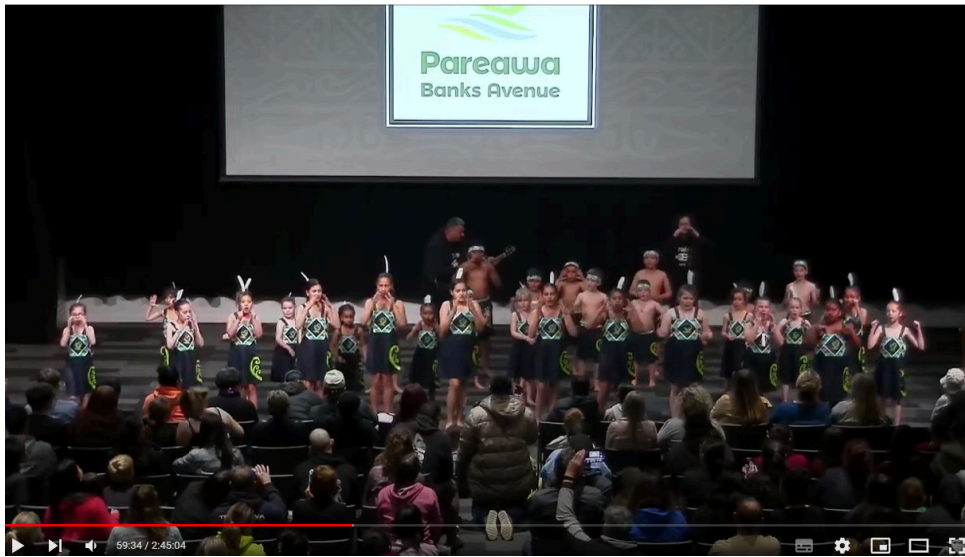
Mihi Whakatau: welcome to Alli

Williams our New Principal

Kapa Haka Performance

It was fabulous to attend the Cultural night last week at SBHS. All of the performances were amazing.

We did get feedback about the children being on the ground and not on the stage. In talking to the organizers it appears a decision was made not to use the stage for health and safety reasons. We are sorry if this made it difficult to see some of the performances.



Our performance starts at 54 minutes

<https://www.youtube.com/live/npesnxLaY3o?si=HP2cChFWMk2KtEfl>



Winter Tournament

Congratulations to our Rugby team (1st place) and our Netball team (Runner Up); both of these teams will now go on to represent the East Zone at the Canterbury's on September 5. A special thankyou to their coaches; Scott Bradley, Matthew Calder, Marlee Harriman (Rugby) and Lydia Hira (Netball). Well done to our Hockey and Football teams who also showed HEART and played really well - we are proud of you.



Pāhake: SENIOR MODULE

Shirley Tennis Club Scholarships



On Friday we were delighted to welcome one of our ex parents, Ching Evans from the Shirley Tennis Club who came along to our hui to present two scholarships for 2024. Congratulations to Lucy W and Jackson A from Kōtukutuku who will get underway with their tennis learning early in Term 4. We hope you love playing tennis and get a lot out of it. Our thanks to the Shirley Tennis Club for this opportunity.

OTHER NEWS

Whānau & Family support

We would like to introduce Meriana Williams from Purapura Whetu. Meriana has two adult children, five mokopuna and lives in the East. She has a background in teaching and learning, te reo Māori, tikanga Māori, Te Tiriti o Waitangi and mental health and wellbeing. Meriana is available to parents for a cuppa and a chat about anything that's on your mind on Tuesdays and Thursdays at the school from 9:30am to 3:30pm. We are really happy to have this opportunity of wraparound support as a perfect fit for living our HEART values. Reach out or call by. If you'd like to make a specific time to meet with Meriana on a Tuesday or Thursday please email Jan: jthompson@pareawabanksave.school.nz



Enviroschools - a note from Mrs Haines

Did you know that we are an Enviro school?

We are asking our school community for help to be an outstanding school with protecting our environment. We currently have lots of litter in and around our school and we need your help in managing this problem.

If every child has two packets of food with small amounts of food inside it, in their lunchbox, that potentially is 820 pieces of litter that are being blown and tossed around our school. This is because they have been dropped out of a lunch box, fallen out of a pocket, blown out of a lunch box on a windy day, or just left lying there after students have eaten. We have shown the students how much litter is left behind each day, given out HEART tokens when we see students pick up other students' litter, have students check their area for litter before they leave after eating and many conversations around picking up and reducing the litter. Still we seem to be a magnet for gathering litter.

Did you know, schools have to pay to get rid of all rubbish, so that's one good reason for students to take home their empty packaging inside their lunch boxes, rather than filling the bins, and have the package accidentally being blown around the school. By taking home the packages, this will be letting you know what they have eaten. Unfortunately litter escapes lunch boxes, so we are asking you if you could help us by putting the food into small containers in your child's lunch boxes. It is cheaper to buy one large bag/container of a specific food item and share it out over the week rather than individualised small packets put daily into lunch boxes only for the packets not to return home but be left as litter at school.

We are composting food scraps to use on our vege gardens to help replenish the soil when growing vegetables. So we ask please, can you help us as a whole school community to ease the litter load that is frequenting our school grounds.

Tūhono Kapa Haka Festival 2024

Next month our tuakana (senior) kapa haka group (Year 3-6 akonga) will be performing at the Tūhono Festival being held at the Christchurch Town Hall.

Tickets for this festival are now available to purchase from Humantix and will likely sell out so get in quick! Our group is performing on Sunday 15 September at the 9:45am performance with 8 other kura (schools). Ticket prices are: Adults \$16, Children (aged 5-17) \$6. Alternatively, you can buy a full day pass to enjoy the competition part of the show (both junior and senior in the afternoon) Adults: \$24, Children \$10.

<https://events.humanitix.com/tuhono-kapa-haka-festival-2024>



Letter from NZEI Teachers Union

13 August 2024

Open letter to parents and whānau

As teachers and school leaders, we go to work every day to support your children to succeed. Students in our country are among the best in the world for creative thinking, achieve in the top dozen countries in reading and science and score above the average of other OECD countries in math.

New Zealand teachers are sought after globally because of our skills and expertise. What we know from our own experience and the research is that every child is unique. The work of a teacher is to use a whole toolbox of skills and expertise to personalise the learning that will best meet each child's needs.

The Luxon Government is fast-tracking a new math curriculum into schools next year. However, a standardised, narrower approach to teaching and learning is not consistent with expert advice about how we improve math teaching – and could make it harder for us to meet the diverse needs of students.

The real crisis we are facing in our schools is not teaching and learning, but a crisis of funding and resourcing. A major barrier to us meeting the needs of every child currently is the lack of resourcing for learning support. This, combined with a persistent equity gap resulting from poverty, the housing crisis and transience, has a significant impact on student achievement.

At least three in 10 students who need learning support – whether that's a teacher aide or specialist support – are currently not getting it.

We pledge to do our best to support the learning of your child and their classmates, but we ask that you support our call for funding increases in education so that there is a teacher aide in every classroom and more specialist staff to support our tamariki. If you'd like to know more about these issues, or ways you can support your child's learning, please talk to their teacher. You know your child best, and as partners we can work together to ensure your child experiences success

Sick Bay - Ice Cream Containers Needed

As we have a lot of sickness at the moment, if you have any spare ice cream containers could you please drop them off to the office for us to use. Lids are not required. Thank you.

57 Averill Street, Richmond Christchurch

www.pareawabanksave.school.nz | 03 385 4163 | office@pareawabanksave.school.nz

Hauora | Excellence | Aroha | Respect | Togetherness

Our school HEART values are central to all that we do at Pareawa Banks Avenue School. Once a child has received a HEART token they hand it into a collection box in their classroom. Teachers tally and record how many tokens each child earns under each of our values.

- 25 HEART tokens (same value) - name in newsletter.
- 50 HEART tokens (same value) - a wristband.
- Two or more wristbands the same - ice-cream with the principal.

Ultimately children are trying to earn all five wristbands. Once they have done this and then collected an additional fifty tokens they will receive the black HEART wristband, each subsequent time they complete this process they will earn a HEART badge in Bronze, Silver then Gold, these all depict strong school citizenship.

TWENTY FIVE TOKENS

Hauora: Dakoda B, Benji L (*Poataniwha*)

Excellence: Esme B, Bobbie C, Maliana W, Havi K, George B (*Poataniwha*)

Aroha: George B, Kalani A, Henry B, Leon B, Maddie C, Finn D, Xevera H, Manu L, Theo M, Riley W-B (*Poataniwha*)

Respect: Devam P, Dakoda B, Finn Dekker (*Poataniwha*)

Togetherness: Maddie C, Annabelle W, Sofia B (*Poataniwha*)

FIFTY TOKENS - these children have earned their wristband this week

Hauora: Rosa G (*Poataniwha*); Leon R-F, Nash N, Ember-Rain H (*Kōtukutuku*)

Excellence: Finn R, Jack r, Meghmi S, Libby W, Dakoda B, Tāmaki G, Charlie D, Fergus S-N, Benjamin P (*Poataniwha*); Levi d-W (*Kōtukutuku*); Beau Y (*Manakura*)

Aroha: Indy E, Kenzie W, Aria M (*Poataniwha*); Renae B, Tama A, Amy O (*Kōtukutuku*); Aadhya P (*Manakura*)

Respect: Meghmi S, Theresa V, Elijah W, Henry B, Xevera H (*Poataniwha*); Reuben O'B, Emilia B, Eva-Jean S, Lewis C (*Kōtukutuku*); Luca S, Rhiannon M-B (*Manakura*)

Togetherness: Alex R, Indy E, Finn R, Theresa V, Loreley R-F, Tāmaki G, Bobbie C (*Poataniwha*); Eva-Jean S, Renae B, Amy O (*Kōtukutuku*)

BLACK HEART WRISTBAND

A big congratulations to Brayden N and Tama A of Kōtukutuku and Aadhya P of Manakura who have all worked extremely hard to earn their Black HEART wristband.

POSTPONEMENTS AND CANCELLATIONS

Pareawa Banks Avenue School trip or event postponements and or cancellations will only be advised via Skool Loop, Facebook and as viewed on our website: www.pareawabanksave.school.nz

ABSENCES

If your child is absent from school, for any reason, please let our school office know using one of the following options:

Phone us: 385 4163 → option 3

Text us: 027 422 8032

Notify us: Skool Loop app

Email us: office@pareawabanksave.school.nz

Complete our absence form: www.pareawabanksave.school.nz/absences

If your child arrives at school after 9:00am, they must check in at the office to pick up a late pass. This saves a lot of phone calls for unexplained absences in order to ensure the safety of all our children. Please don't message about absences using our school Facebook.



[Tips for whānau to help support your child's attendance at school!](#)

HEARTBEAT Radio 106.7FM



MONDAY-FRIDAY MORNING LIVE SHOWS

Listen to our students master broadcasting radio. If you live close to the school (within 6 kms) you can tune into 106.7FM on your radio, to listen or listen online on your device from the following link: bit.ly/heartbeatfm

Programmes are broadcast every day before school from 8:30am-8:55am and music is played 24/7.

