

WAIMEA INTERMEDIATE SAFER ROUTES TO SCHOOL PLAN

HOW TO TRAVEL TO WAIMEA INTERMEDIATE IN 2024

With new cycle lanes now in place on both sides of Salisbury Road, students are encouraged to travel to school using an active travel mode if possible (walking, cycling or scooting).

If you can't use an active travel mode to get to school, why not park and walk? Please see the map on the other side of this flyer which shows three potential park and walk locations:

★ D'Arcy Street ★ Florence Street ★ William Street

You could also choose another option that is 500m/1km away from school, avoiding Salisbury Road where you can (and not on yellow lines or school driveways).

ACTIVE TRAVEL BENEFITS

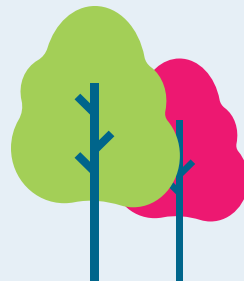
- ☀ Students learn street sense and road safety
- ☀ Reduces congestion and car parking issues
- ☀ Increased productivity for learning
- ☀ Less carbon emissions for the Tasman community

ACTIVE TRAVEL TIPS

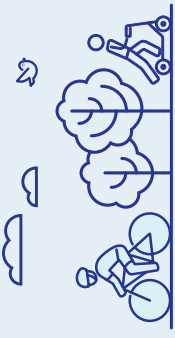
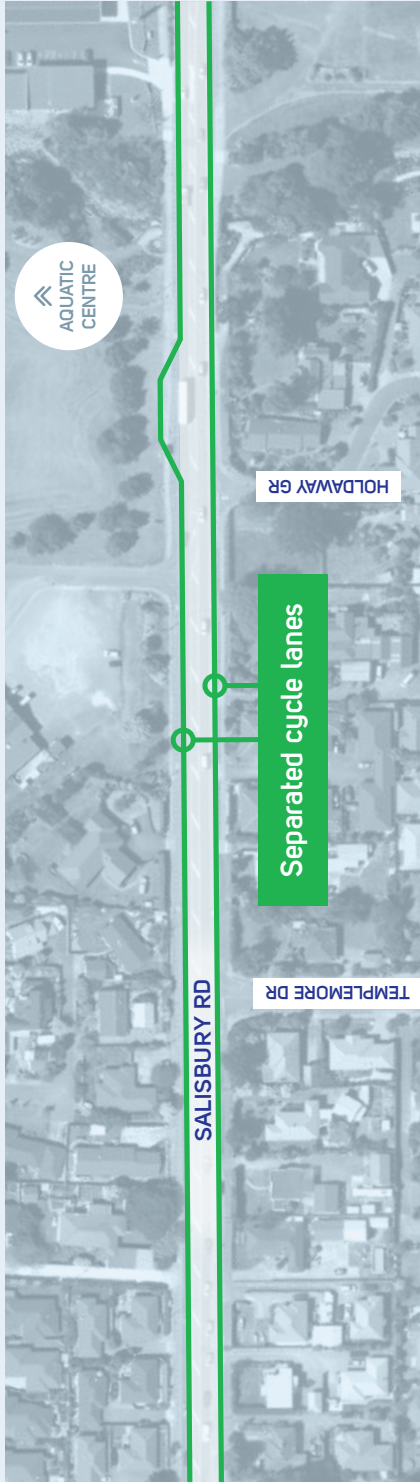
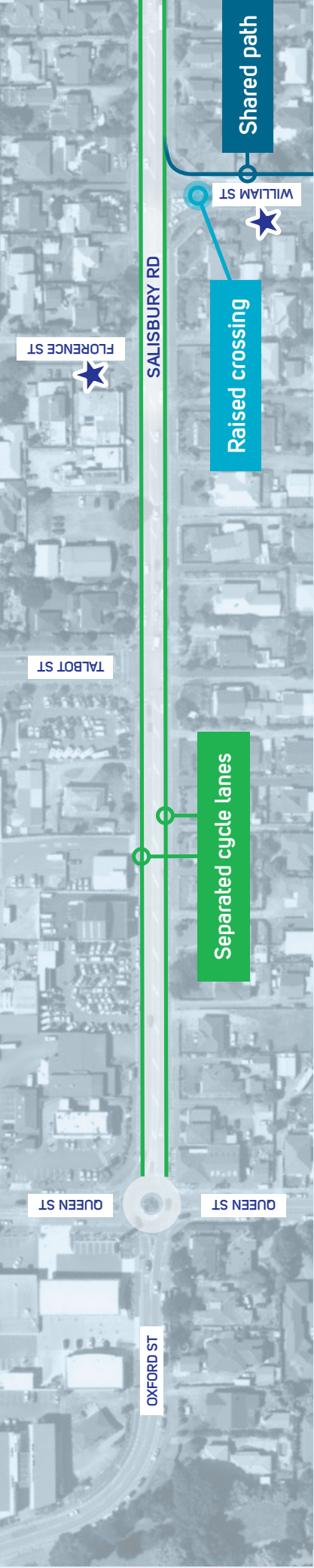
- ☀ Always plan your journey along shared paths, cycleways or quiet streets
- ☀ Have a practice run on the weekend to see how long it takes
- ☀ Always fasten your helmet and ensure your tyres are pumped up



Pictured: New raised crossing at the Salisbury Road end of William Street



For more information, visit
shape.tasman.govt.nz/salisbury-road



For more information, scan the QR code or visit shape.tasman.govt.nz/streets-people

Safety improvement locations are indicative only and not to scale.



Streets for People