



Te Pūkenga

Whitireia
NEW ZEALAND

WelTec
Te Whare Wānanga o Te Awakairangi

Wellington Trades Academy

 whitireiaweltec.ac.nz



Get in touch

✉ Wellington.TradesAcademy@whitireia.ac.nz
☎ 0800 935 832

Find out more

For more and up-to-date information about Wellington Trades Academy and its courses, scan our QR code below:



Our Resources

For more and up-to-date information about our courses and the unit standards they are comprised of scan our QR code below:



Join Us

Kia ora, Welcome	1
How does Trades Academy work?	2
Creativity	3
Construction & Infrastructure	8
Manufacturing & Technology	11
Primary Industries	15
Service Industries	17
Social & Community Services	20
Notes	24



Kia ora, Welcome

Wellington Trades Academy courses provide students with the opportunity to get a head start, continue with education and learn new skills in a variety of vocational pathways not offered within secondary schools. You will select one area of interest and attend classes either one or two days per week, whilst still attending your usual secondary school for the other two or three days. The pathway you choose will allow you to gain credits towards NCEA and also across other national qualifications within vocational pathways.

These skills will assist in preparing you for either further study in your chosen area, or entry into employment or apprenticeships. It is an exciting opportunity for you to start developing the skills and attributes that are valued by employers alongside gaining you qualifications. We support you, along with your teachers at school, in planning your next stage to identify what that may look like.

CREATIVITY

If you're the creative type there's a tonne of opportunities in this industry, from working in visual and performing arts to roles in communications and events. People in this industry are cultural ambassadors for the country, they tell our stories and help shape the future.



How does Trades Academy work?

Structure

Programmes run 1-2 days a week (depending on course) from 9:00am – 2:30pm. The other 3-4 days you will spend at school as normal.

Most programmes run for 34 weeks from the second week of February till the second week of November. They run alongside the normal school year and holidays.

Eligibility

To be eligible for this programme you must be enrolled in a secondary school in the greater Wellington region. Applications will be considered from students on a case-by-case basis.

We may also request students to attend an interview with a family member or school representative.

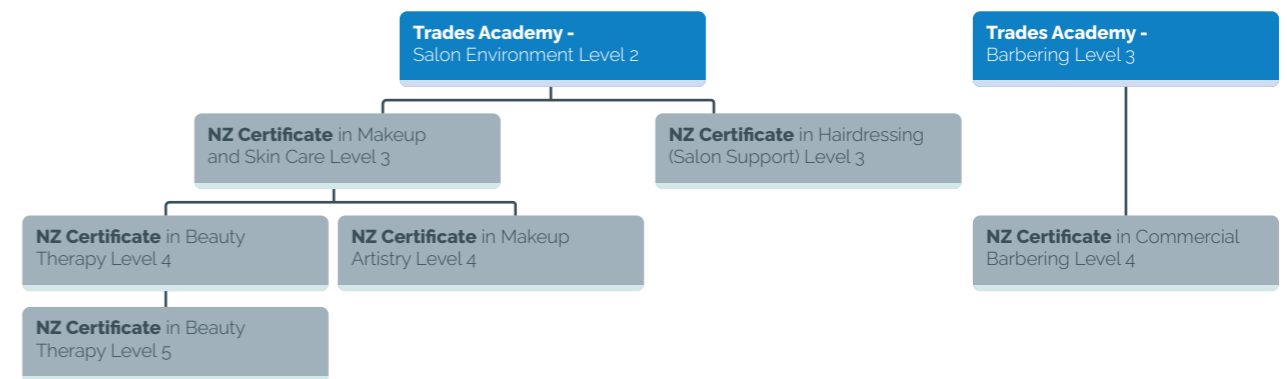
Transport and Cost

This is provided free, subject to students meeting the MoE requirements.

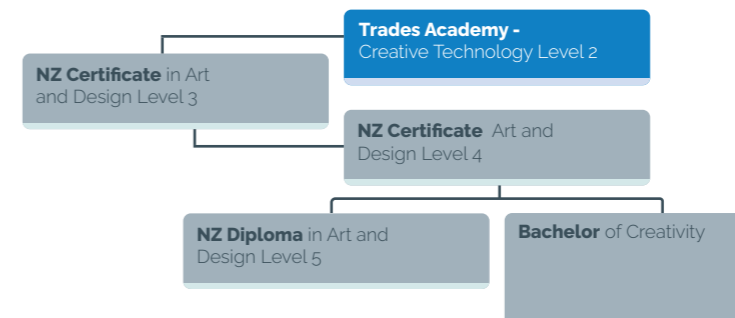
Wellington Trades Academy programmes are all fully funded and free for students provided they meet the criteria outlined below.

Creativity Pathways

Hairdressing, Barbering & Makeup Artistry, Beauty Therapy



Creative Technology





Barbering

CAMPUS **Whitireia Campus, Porirua**
 DAYS **Thursday & Friday**

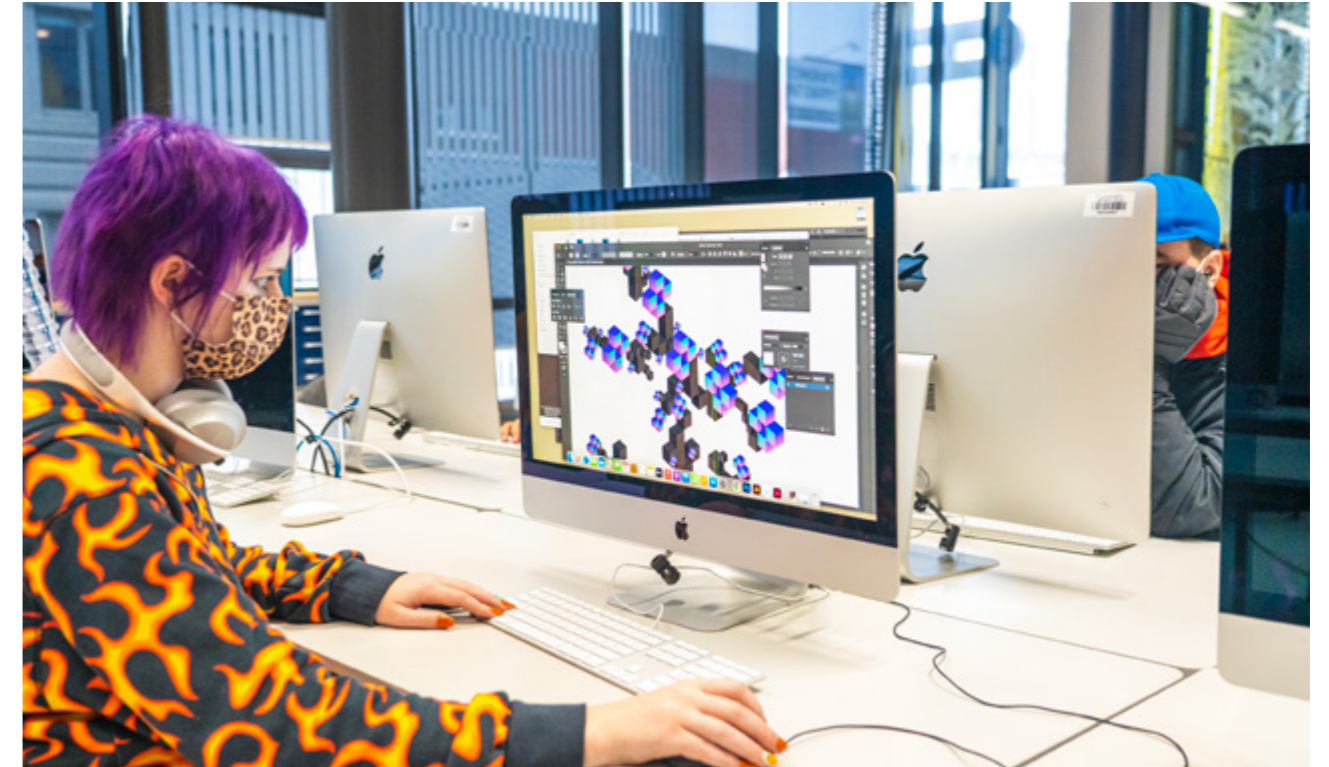
Kick start your barbering skills and learn from the best in town. You'll learn all about the barbering trade, its origins, how to talk to customers, initial cutting techniques, beards, moustaches and other skills that will lead you onto the level 4 barbering programme where you can become a fully qualified, commercial barber.

Course Specifics

- Level 3
- 38 credits
- Equipment supplied, but closed shoes required.

Career Pathways

- Barbering
- Hairdressing



Creative Technology

CAMPUS **Te Auaha, Wellington**
 DAYS **Thursday & Friday**

This is a course that uses a wide range of creative technologies to develop creative skills. Our aim is to give students a taste of career pathways that are available within the art and design discipline. Digital literacy and a willingness to work on computers is essential, as these skills, alongside physical making skills are developed through the course.

Students will learn about Adobe CC applications, and they will work individually and collaboratively on projects in areas such as: film making, basics of game design, costume design and prop building, and Toi Māori. Students who gain the most from this course are those who are willing to experiment and work outside their comfort zones to create highly conceptual and imaginative works.

Course Specifics

- Level 2
- 43 credits
- Equipment provided if appropriate.

Career Pathways

- Architecture / Industrial Design
- Web Design
- Visual Arts
- Film
- Game Design
- Graphic Design



Salon Environment

CAMPUS **Whitireia Campus, Porirua**
DAYS **Thursday & Friday**

You will learn an exciting range of skills in the fields of hairdressing, beauty therapy and make-up artistry. Hairstyling, including cleansing, treatments and massage, different blow-drying techniques, hair-ups and how to use hot tools effectively. In the beauty therapy realm, you will learn all about the skin and skin nutrition, beauty routine, eyebrow tidying and basic day make-up then onto some make-up artistry skills for each of the features and an introduction to the world of special effects. You'll also learn some of the crucial communication skills required to carry out services and how to present yourself for the industry.

Course Specifics

- Level 2
- 43 credits
- Protective clothing and safety equipment is provided if appropriate

Career Pathways

- Makeup Artist
- Hairdresser
- Beautician



Jasmine

STUDIED **Creative Technology**

Jasmine was researching ways to hone her skills when she found the Wellington Trades Academy online. She had an interest in design and wanted to develop her skills outside of school that weren't purely academic.

The practical, open learning environment is what made learning and crafting her talents easy and enjoyable for her. Trades Academy helped her learn more about the Adobe suite, and she really liked the creative freedom she had with the different assessments.

Jasmine would definitely advise anyone looking to develop their talents further to take the course. She liked the support she found at Trades Academy, so she could really grow her design and overall creative skills, with invaluable resources you can't find at school.

"I really like the creative freedom you have, and how much it's helped me learn the Adobe suite."

CONSTRUCTION & INFRASTRUCTURE

If you enjoy teamwork, a varied workday and learning by doing then this could be the pathway for you. Work in this incredibly important industry is varied, rewarding and often physically active. You can take pride in playing your part to build, repair and maintain New Zealand from below the ground up.



Construction Mixed Trades

CAMPUS **Whitireia Campus, Porirua**
 DAYS **Monday & Tuesday or Thursday & Friday**

Course Specifics

- Level 2
- 49 credits
- Two cohorts taught across either Monday & Tuesday or Thursday & Friday
- Clothing and equipment provided if needed

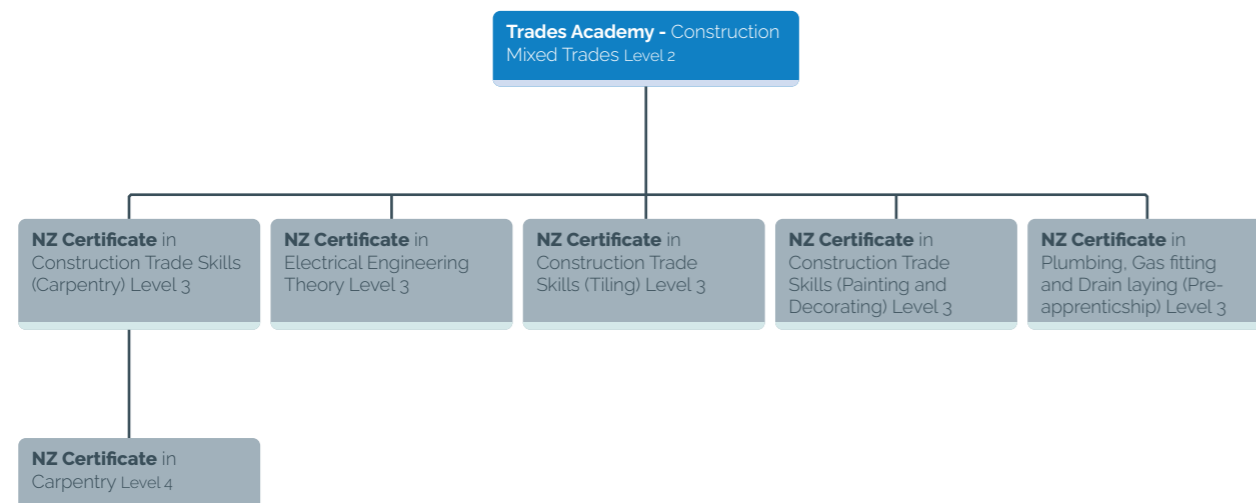
Career Pathways

- Labouring
- Trades - Construction, Electrical, Painting, Plumbing and Tiling

You will have the opportunity to learn a wide range of skills in the fields of Construction including: Plumbing, Painting and Electrical trades. This will include Health and Safety, workshop practice, the chance to work on projects and how to use hand tools safely. Each Trade offers an insight into the techniques, range of work and both employment and further study opportunities. You will also learn some beneficial communication skills, required to work within the Trades and how to present yourself for the industry.

Construction and Infrastructure Pathways

Construction





Katherine

STUDIED **Construction**

Katherine was a bit apprehensive when first looking into Trades Academy, she had an interest in building things but needed a push from her Careers Advisor at school to sign up for the Construction Mixed Trades course. The practical work and building projects were some of her favourite parts, alongside making new friends with students from different schools.

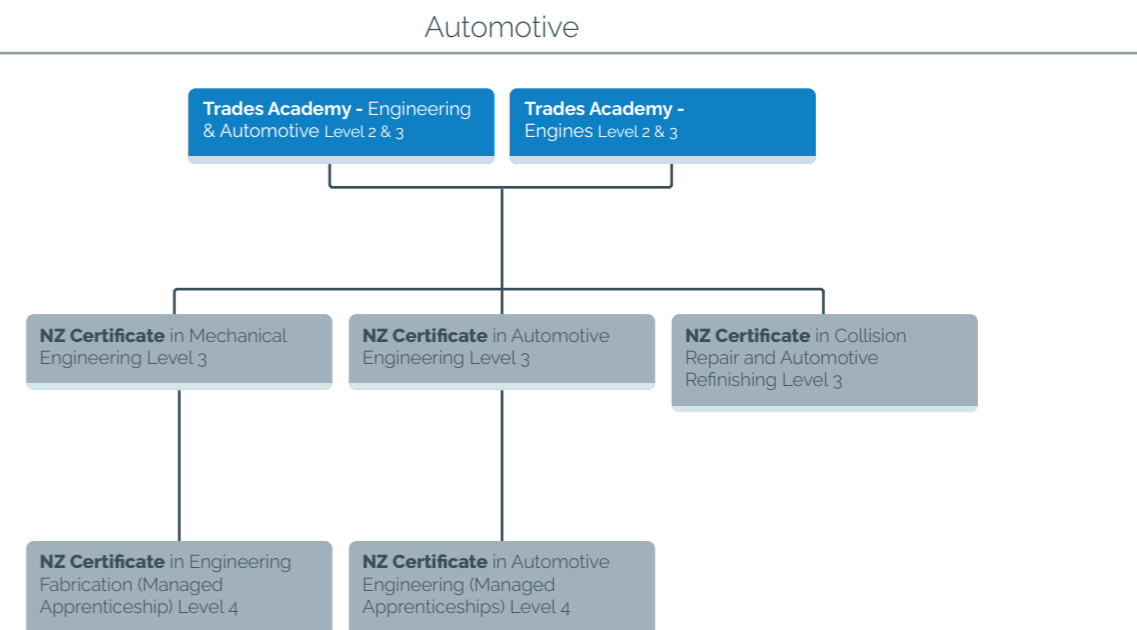
Her biggest piece of advice for anyone who is sitting on the fence is to just do it and try everything. She was a bit scared at first but it was a great experience that has left her wanting more. She received an immense amount of support from the WTA staff and tutors, this to her was invaluable.

“You learn an amazing variety of skills and you make a lot of friends.”

MANUFACTURING & TECHNOLOGY

If you have an interest in making things work, are inquisitive and able to think outside the box then this may be the pathway for you. It covers a whole range of working styles from hands-on assembly to cutting-edge research, busy production lines to crafts and computer design. These jobs offer opportunities to make new discoveries and a practical difference to the world.

Manufacturing and Technology Pathways





Engineering & Automotive

CAMPUS **Whitireia Campus, Porirua**
DAYS **Monday & Tuesday or Thursday & Friday**

You will have the opportunity to learn a wide range of skills in the fields of either the Engineering or Automotive trades. This will include Health and Safety, workshop practice, the chance to work on projects and how to use hand tools safely. These trades offer an insight into the techniques, range of work and both employment and further study opportunities. You will also learn some beneficial communication skills, required to work within the Trades and how to present yourself for the industry.

Course Specifics

- Level 2 & 3
- 43 credits
- Two cohorts taught across either Monday & Tuesday or Thursday & Friday
- Protective clothing and safety equipment provided if appropriate

Career Pathways

- Manufacturing - Automotive and Engineering Industries
- Technology - Automotive and Engineering Industries (Welding/Machinist/Fabricator)



Engines

CAMPUS **Whitireia Campus, Porirua**
DAYS **Thursday & Friday**

You will have the opportunity to learn a wide range of skills in the field of Automotive trades. This will include Health and Safety, workshop practice, the chance to work on projects and how to use hand tools safely. These trades offer an insight into the techniques, range of work and both employment and further study opportunities. You will also learn some beneficial communication skills, required to work within the Trades and how to present yourself for the industry.

Course Specifics

- Level 2 & 3
- 50 credits
- Protective clothing and safety equipment provided if appropriate

Career Pathways

- Manufacturing - Automotive and Engineering Industries
- Technology - Automotive and Engineering Industries (Welding/Machinist/Fabricator)

PRIMARY INDUSTRIES

If you like spending time in nature and looking after living things then this could be the industry pathway for you. Whether on the land or in an office, there are a huge range of jobs and variety of experiences on offer, as well as the opportunity to work in some of the most stunning landscapes in the world.



Kieran

STUDIED **Engineering & Automotive**

Kieran comes from Paraparaumu College and was already interested in Engineering and Automotive from his time racing. After having a kōrero with his school's Careers Advisor, he came to study the Engineering & Automotive course at Trades Academy.

Kieran enjoyed the practical nature of the course and found the mix of hands-on work and paperwork added to a valuable learning experience.

He felt supported by a great tutor as well as a good vibe in class. He encourages students to follow their dreams, do something they love and take it at their own pace to make it work.

"I loved the hands-on side of the course; sometimes the paperwork, too. It all adds up to be really enjoyable!"

Primary Industries Pathways

Animal Care & Vet Nursing

Trades Academy - Introductory Animal Care Level 3

NZ Certificate in Animal Care (Companion Animals) Level 3

NZ Certificate in Animal Technology (Veterinary Nursing Assistant) Level 5



Introductory Animal Care

CAMPUS **Petone Campus**
 DAYS **Monday & Tuesday**

This is a course that uses a wide range of techniques that provides the students with the hands on experience in health and husbandry of companion animals. Students learn the correct care and animal handling techniques for cats, dogs and rabbits. Through this course, students learn the basics of hygiene management for animal housing and zoonosis. Our aim is to prepare and develop our student's knowledge and skills to work in the industry or continue future study in the animal care and vet nursing field.

Course Specifics

- Level 3
- 42 credits
- Protective clothing and safety equipment is provided if appropriate

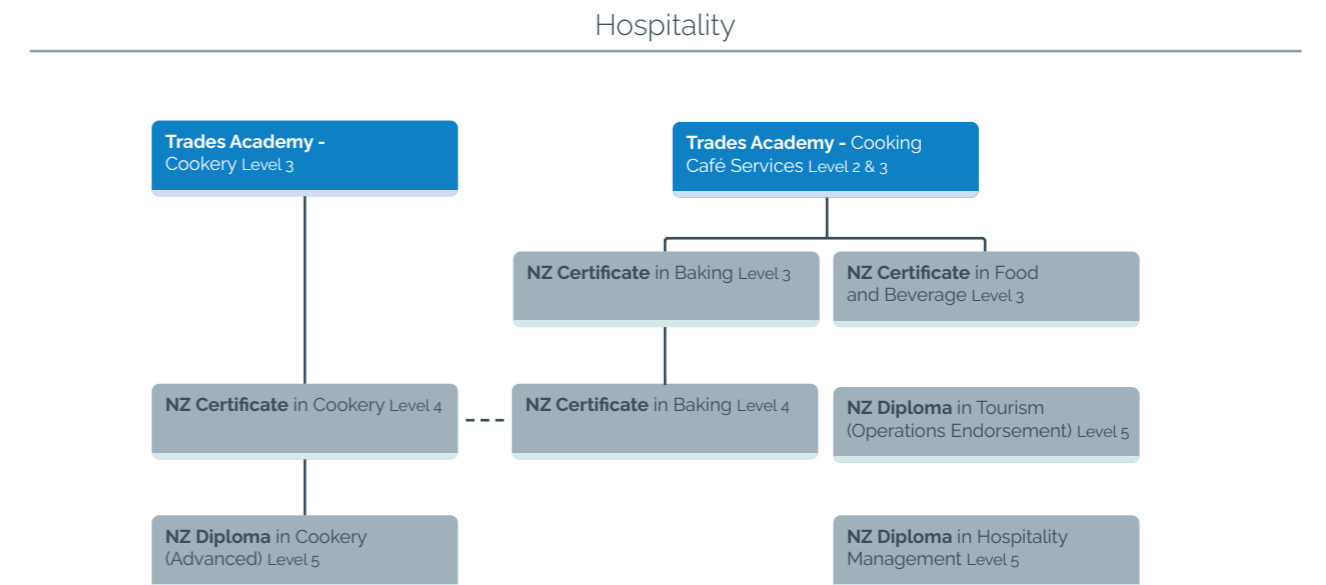
Career Pathways

- Animal Care Attendant
- Dog Trainer
- Pet Groomer
- Veterinary Nurse

SERVICE INDUSTRIES

If you're a people person then this could be the pathway for you. This diverse industry makes up a huge percentage of New Zealand's workforce. Experience in the services industry can take you around the world as well as giving you transferable skills to help you progress into great careers.

Service Industries Pathways





Cooking Café Service

CAMPUS **Hospitality Campus,
Wellington**

DAYS **Thursday & Friday**

This programme is designed to give students basic skills and experience both in the kitchen and behind the counter in a café environment. Graduates may be able to gain employment in an entry level position in the industry. The programme is predominantly practical in nature and includes sought after inclusions such as Food and Safety, knife handling skills, basic methods of cookery, customer interaction and counter service as well as espresso, tea and cold beverage production. Alongside the physical skills learned, students develop life skills such as time management and nutrition through to personal presentation and ironing their uniform.

Course Specifics

- Level 2
- 44 credits
- Protective clothing and equipment is provided if appropriate

Career Pathways

- Barista
- Chef/Cook
- FOH Staff



Cookery

CAMPUS **Hospitality Campus,
Wellington**

DAYS **Monday & Tuesday OR
Thursday and Friday**

This programme has been developed to give students an authentic working insight into the requirements of a kitchen worker in the industry. Topics covered include practical skills based on commodities such as meat, fish, vegetable, egg, rice and pasta dishes. Students learn about hot & cold desserts and basic plating techniques. These skills are complimented with content, preparing the students for the expectation of employers in the industry with topics such as food safety, standard operating procedures and interaction with fellow staff, managers and customers. There is an expectation that students take responsibility for their own success which builds confidence and life skills such as time management and personal presentation.

Course Specifics

- Level 3
- 60 credits (subject to students commitment and ability)
- Two cohorts taught across either Monday & Tuesday or Thursday & Friday
- Protective clothing and equipment is provided if appropriate

Career Pathways

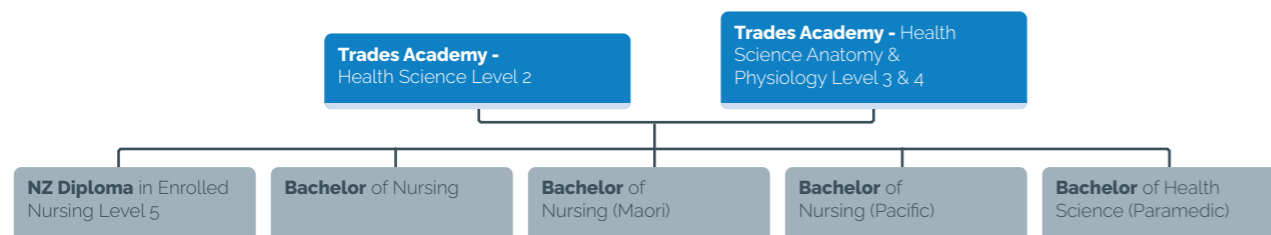
- Chef/Cook

SOCIAL & COMMUNITY SERVICES

This is an essential industry for the well-being and safety of our citizens and roles here can be really rewarding. If you want the work you do to matter deeply then this could be the pathway for you. This is an ever-growing sector with the demand for workers increasing, and the skills you gain in these roles can help you progress in a wide variety of careers.

Social & Community Pathways

Health



Health Science Level 2

CAMPUS **Whitireia Campus, Porirua**
 DAYS **Thursday**

This programme provides hands-on learning in science and health. Students will gain knowledge and skills through practical experience in our simulation training suites. Some industry visits are included in this programme.

Course Specifics

- Level 2 & 3
- 23 credits
- Protective clothing and safety equipment is provided if appropriate.

Career Pathways

- Nursing
- Paramedicine
- Social Work
- Support Worker
- Caregiving



Health Science Anatomy & Physiology

CAMPUS **Whitireia Campus, Porirua**
DAYS **Wednesday or Thursday**

This course is a Level 3 and Level 4 course in anatomy and physiology of the human body. It is designed to give a pathway for students to follow further study in health or prepare them for careers in the health field. Students will build their knowledge from microbiology up through to the systems of the body. This will involve theory and practical learning both as individuals and groups. This course would be recommended for students who are serious about studying in a health-related field or to follow a career in the health industry.

Course Specifics

- Level 3 & 4
- 21 credits
- Protective clothing and safety equipment is provided if appropriate.

Career Pathways

- Nursing
- Paramedicine
- Social Work
- Support Worker
- Caregiving



Skye Anna

STUDIED **Health Science**

Sixteen-year-old Skye Anna from Aotea College took the Health Science Level 2 course after learning more from her pathway's advisor at school. She enjoyed how the course allowed her to plan for her future and the ability to choose what she is learning.

She is planning to return to study here and feels very comfortable to come back to an environment full of support. She notes that other students should really think about what the courses can offer them in the future, she has no regrets and cannot wait to get back into it.

“Everyone is accepted for who they are and supported through the year.”

NOTES

Connect with us



Facebook: @whitireiaandweltec
Instagram: @whitireiaandweltec
YouTube: Whitireia and WelTec
Email: information@wandw.ac.nz
Website: whitireiaweltec.ac.nz



tepukenga.ac.nz

DISCLAIMER

The information contained in this information sheet describes the programmes/courses we intend to offer. Please note that programmes and courses are subject to change. Pathway diagrams are not a substitute for the prospectus and are dependent on the individuals qualifications.

Details in this booklet are correct as at time of design, September 2022.